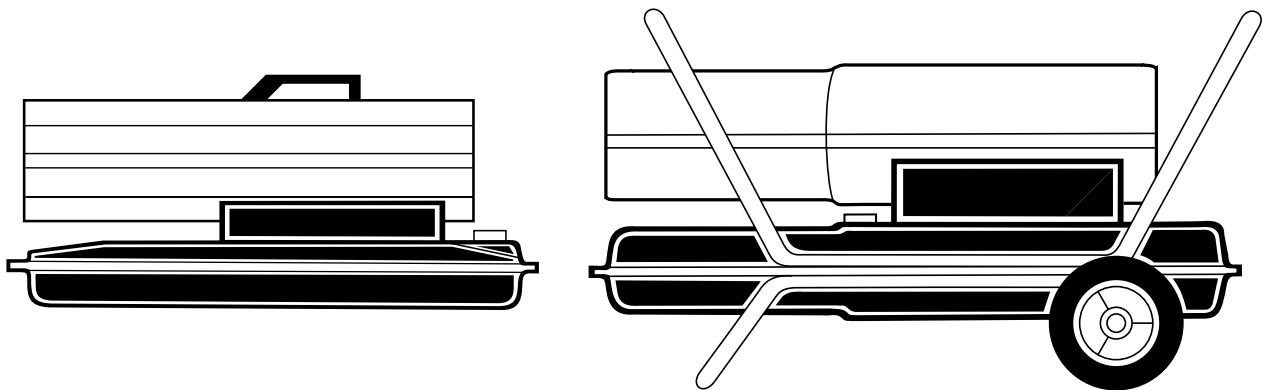


TRADESMAN K70 & K150

KEROSENE PORTABLE FORCED AIR HEATERS

(WITH BUILT-IN THERMOSTAT)

OWNER'S MANUAL



Model Numbers: CP070AK and CP150AK
Heater Sizes: 70,000 and 150,000 Btu/Hr

IMPORTANT: Read and understand this manual before assembling, starting, or servicing heater. Improper use of heater can cause serious injury. Keep this manual for future reference.



L.B.WHITE[®]

L.B.WHITE

KEROSENE PORTABLE FORCED AIR HEATER


SAFETY INFORMATION

WARNINGS

IMPORTANT: Read this Owner's Manual carefully and completely before trying to assemble, operate, or service this heater. Improper use of this heater can cause serious injury or death from burns, fire, explosion, electrical shock, and carbon monoxide poisoning.

Carbon Monoxide Poisoning: Early signs of carbon monoxide poisoning resemble the flu, with headaches, dizziness, and/or nausea. If you have these signs, the heater may not be working properly. **Get fresh air at once!** Have heater serviced. Some people are more affected by carbon monoxide than others. These include pregnant women, persons with heart or lung disease or anemia, those under the influence of alcohol, and those at high altitudes.

Make certain you read and understand all Warnings. Keep this manual for reference. It is your guide to safe and proper operation of this heater.

 DANGER: Carbon monoxide poisoning may lead to death!

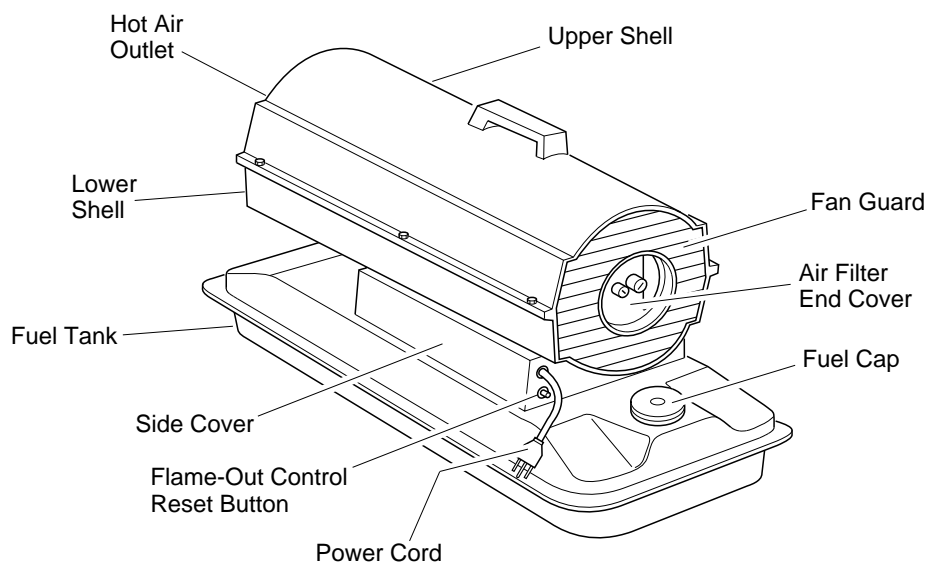
- Use only kerosene or No. 1 fuel oil to avoid risk of fire or explosion. Never use gasoline, naphtha, paint thinners, alcohol, or other highly flammable fuels.
- Fueling
 - a) Personnel involved with fueling shall be qualified and thoroughly familiar with the manufacturer's instructions and applicable federal, state, and local regulations regarding the safe fueling of heating units.
 - b) Only the type of fuel specified on the heater's data plate shall be used.
 - c) All flame, including the pilot light, if any, shall be extinguished and the heater allowed to cool, prior to fueling.
 - d) During fueling, all fuel lines and fuel-line connections shall be inspected for leaks. Any leaks shall be repaired prior to returning the heater to service.
 - e) At no time shall more than one day's supply of heater fuel be stored inside a building in the vicinity of the heater. Bulk fuel storage shall be outside the structure.
 - f) All fuel storage shall be located a minimum of 25 feet from heaters, torches, welding equipment, and similar sources of ignition (exception: the fuel reservoir integral with the heater unit).
 - g) Whenever possible, fuel storage shall be confined to areas where floor penetrations do not permit fuel to drip onto or be ignited by a fire at lower elevation.
 - h) Fuel storage shall be in accordance with the federal, state, or local authority having jurisdiction.
- Never use heater where gasoline, paint thinner, or other highly flammable vapors are present.
- Follow all local ordinances and codes when using heater.
- Heaters used in the vicinity of tarpaulins, canvas, or similar enclosure materials shall be located a safe distance from such materials. The recommended minimum safe distance is 10 feet. It is further recommended that these enclosure materials be of a fire retardant nature. These enclosure materials shall be securely fastened to prevent them from igniting or from upsetting the heater due to wind action.
- Use only in well vented areas. Before using heater, provide at least a three-square-foot opening of fresh, outside air for each 100,000 Btu/Hr of rating. This heater produces carbon monoxide, which is listed by the State of California as a reproductive toxin under Proposition 65.
- Use only in places free of flammable vapors or high dust content.
- Use only with the electrical voltage and frequency specified on model plate.
- Use only a three-prong, grounded extension cord.
- Minimum heater clearances from combustibles:

Outlet: 8 Ft.	Sides: 4 Ft.
Top: 4 Ft.	Rear: 4 Ft.
- Locate heater on a stable and level surface while hot or running or a fire may occur.
- When moving or storing heater, keep heater in a level position or fuel spillage may occur.
- Keep children and animals away from heater.
- Unplug heater when not in use.
- This heater is equipped with a thermostat. Heater may start at anytime.
- Never use heater in living or sleeping areas.
- Never block air inlet (rear) or air outlet (front) of heater.
- Never move, handle, refuel, or service a hot, operating, or plugged-in heater.
- Never attach duct work to front or rear of heater.

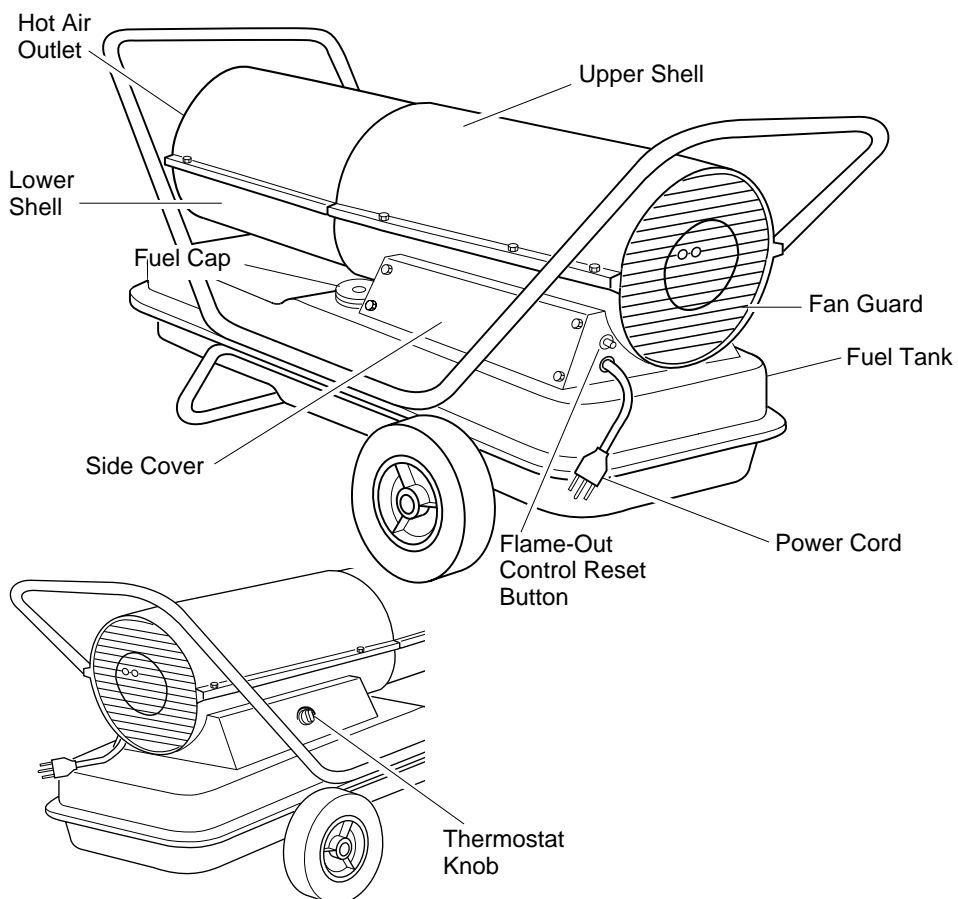
OWNER'S MANUAL

PRODUCT IDENTIFICATION

70,000 BTU UNIT



150,000 BTU UNIT



UNPACKING

1. Remove all packing items applied to heater for shipment.
2. Remove all items from carton.
3. Check items for shipping damage. If heater is damaged, promptly inform dealer where you bought heater.

L.B. WHITE

KEROSENE PORTABLE FORCED AIR HEATER

ASSEMBLY

The 150,000 BTU unit is furnished with wheels and handles. Wheels, handles, and the mounting hardware are found in the shipping carton.

Tools Needed

- Medium Phillips Screwdriver
- 3/8" Open or Adjustable Wrench
- Hammer

1. Slide axle through wheel support frame. Install wheels on axle.

IMPORTANT: When installing wheels, point extended hub of wheels toward wheel support frame (see Figure 1).

2. Place cap nuts on axle ends. Gently tap with hammer to secure.
3. Place heater on wheel support frame. Make sure air inlet end (rear) of heater is over wheels. Line up holes on fuel tank flange with holes on wheel support frame.
4. Place handles on top of fuel tank flange. Insert screws through handles, fuel tank flange, and wheel support frame. Attach nut finger tight after each screw is inserted.
5. After all screws are inserted, tighten nuts firmly.

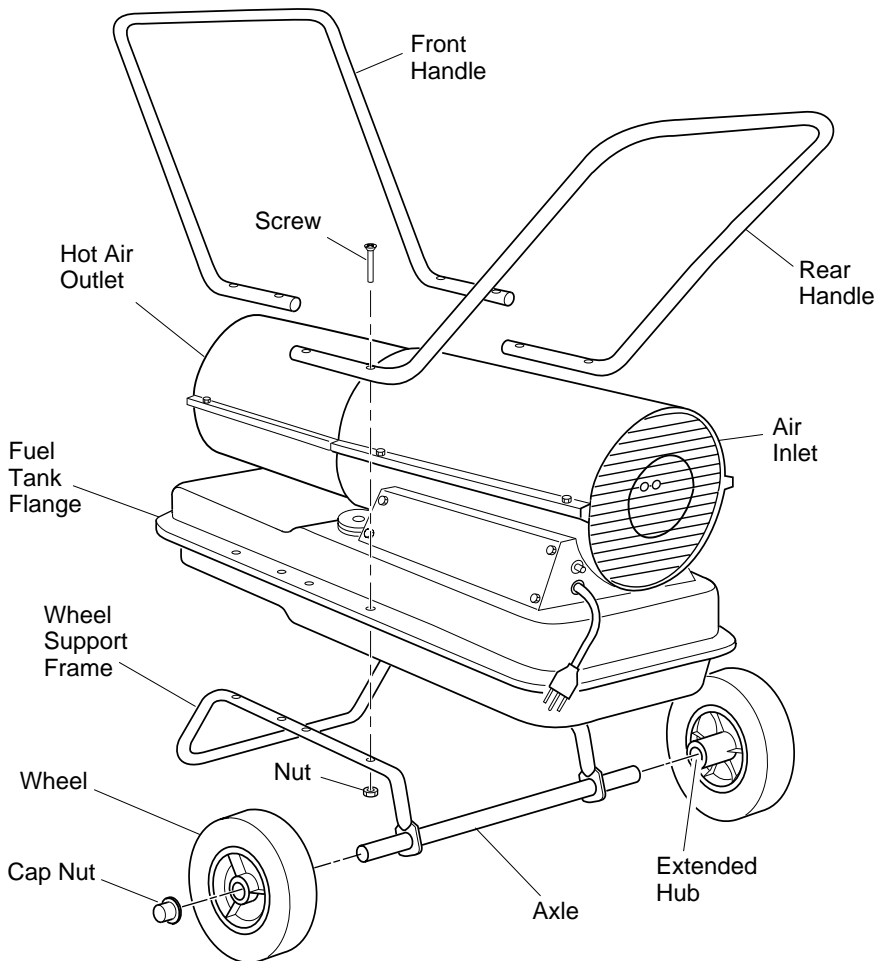


Figure 1 - Wheel and Handle Assembly

FUELS

WARNING: Use only kerosene or No. 1 fuel oil to avoid risk of fire or explosion. Never use gasoline, naphtha, paint thinners, alcohol, or other highly flammable fuels.

Do not use heavy fuels such as No. 2 fuel oil or No. 2 Diesel. Using heavy fuels will result in:

- clogged fuel filter and nozzle
- carbon build up on spark plug
- the need of non-toxic anti-icer in fuel during very cold weather

IMPORTANT: Use a KEROSENE ONLY storage container. Be sure storage container is clean. Foreign matter such as rust, dirt, or water will cause the flame-out control to shut down heater. Foreign matter may also require you to clean fuel system often.

VENTILATION

WARNING: Follow the minimum fresh, outside air ventilation requirements. If proper fresh, outside air ventilation is not provided, carbon monoxide poisoning can occur. Provide proper fresh, outside air ventilation before running heater.

Provide at least a three-square-foot opening of fresh, outside air for each 100,000 Btu/Hr rating. Provide extra fresh air if more heaters are being used. *Example:* A 150,000 Btu/Hr heater requires one of the following:

- a two-car garage door (16 foot wide opening) raised 3 1/2 inches
- a single-car garage door (9 foot wide opening) raised 6 inches
- two windows (30 inch wide opening, each) raised 11 inches

OWNER'S MANUAL

THEORY OF OPERATION

The Fuel System: The air pump forces air through the air line. The air is then pushed through the burner head nozzle. This air causes fuel to lift from the tank. A fine mist of fuel is sprayed into the combustion chamber.

The Air System: The motor turns the fan. The fan pushes air into and around the combustion chamber. This air is heated and provides a stream of clean, hot air.

The Ignition System: The electronic ignitor sends voltage to the spark plug. The spark plug ignites the fuel and air mixture.

The Flame-Out Control System: This system causes the heater to shut down if the flame goes out.

OPERATION

⚠ WARNING: Review and understand the warnings in the Safety Information section, page 2. They are needed to safely operate this heater. Follow all local codes when using this heater.

TO START HEATER

1. Follow all ventilation and safety information.
2. Fill fuel tank with kerosene or No. 1 fuel oil.
3. Attach fuel cap.
4. Plug power cord of heater into three-prong, grounded extension cord. Extension cord must be at least six feet long.

Extension Cord Wire Size Requirements

6 to 10 feet long, use 18 AWG rated cord
11 to 100 feet long, use 16 AWG rated cord

101 to 200 feet long, use 14 AWG rated cord

5. Plug extension cord into standard 120 volt/60 hertz, three-hole, grounded outlet. Adjust thermostat to desired setting. If heater does not start, thermostat setting may be too low. Turn thermostat knob to higher position to start heater. If thermostat is in HIGH position and heater still will not start, push in flame-out control reset button (see Figure 3).

To Stop Heater

1. Unplug extension cord from outlet.

To Restart Heater

1. Wait 2 minutes after stopping heater.
2. Repeat steps under *To Start Heater*.

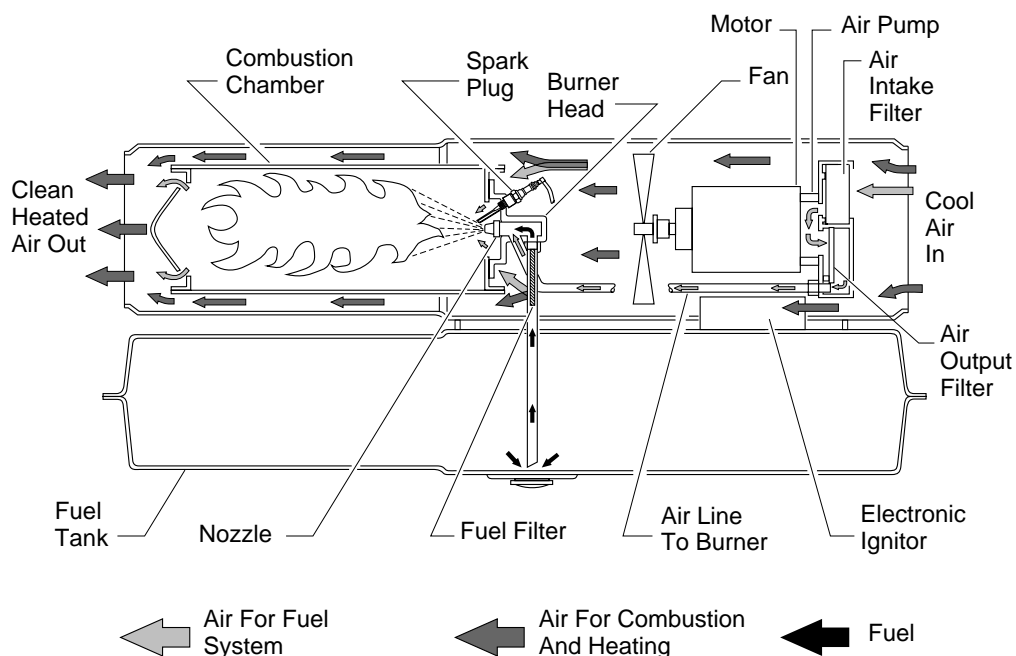
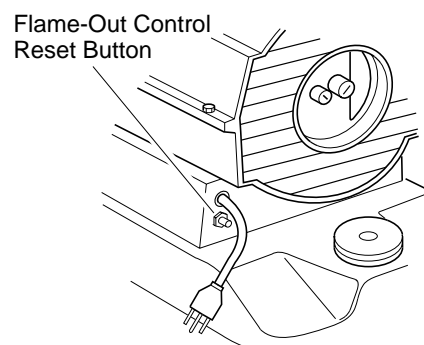
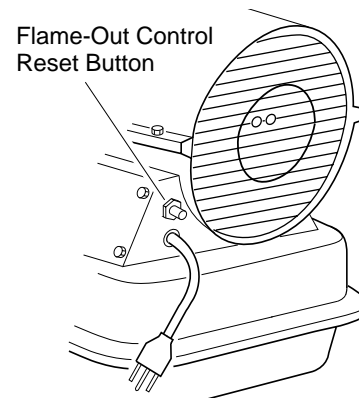


Figure 2 - Cross Section Operational View



70,000 BTU Unit



150,000 BTU Unit

Figure 3 - Flame-Out Control Reset Button

L.B.WHITE

KEROSENE PORTABLE FORCED AIR HEATER

STORING, TRANSPORTING, OR SHIPPING

Note: If shipping, transport companies require fuel tanks to be empty.

1. Drain fuel tank.

Note: Some models have drain plug on underside of fuel tank. If so, remove drain plug to drain all fuel. If heater does not have drain plug, drain fuel through fuel cap opening. Be sure all fuel is removed.

2. Replace drain plug if provided.
3. If any debris is noted in old fuel, add 1 or 2 quarts of clean kerosene to tank, stir, and drain again. This will prevent excess debris from clogging filters during future use.
4. Replace fuel cap or drain plug. Properly dispose of old and dirty fuel. Check with local automotive service stations that recycle oil.
5. If storing, store heater in dry place. Make sure storage place is free of dust and corrosive fumes.

IMPORTANT: Do not store kerosene over summer months for use during next heating season. Using old fuel could damage heater.


PREVENTATIVE MAINTENANCE SCHEDULE

Item	How Often	How To
Fuel tank	Flush every 150-200 hours of operation or as needed	See <i>Storing, Transporting, or Shipping</i> , column 1
Air output and lint filters	Replace every 500 hours of operation or once a year	See <i>Air Output, Air Intake, and Lint Filters</i> , page 8
Air intake filter	Wash and dry with soap and water every 500 hours of operation or replace as needed	See <i>Air Output, Air Intake, and Lint Filters</i> , page 8
Fuel filter	Clean twice a heating season or replace as needed	See <i>Fuel Filter</i> , page 9
Spark plug	Clean and regap every 600 hours operation or replace as needed	See <i>Spark Plug</i> , page 9
Fan blades	Clean each season or as needed	See <i>Fan</i> , page 8
Motor	Not required/permanently lubricated	

⚠ WARNING: Never service heater while it is plugged in, operating, or hot. Severe burns and electrical shock can occur.

OWNER'S MANUAL

TROUBLESHOOTING

 **WARNING: Never service heater while it is plugged in, operating, or hot. Severe burns and electrical shock can occur.**

OBSERVED FAULT	POSSIBLE CAUSE	REMEDY
Heater ignites, but flame-out control shuts off heater after a short period of time	<ol style="list-style-type: none">1. Wrong pump pressure2. Dirty air output, air intake and lint filters3. Dirty fuel filter4. Dirt in nozzle5. Dirty photocell lens6. Bad flame-out control	<ol style="list-style-type: none">1. See <i>Pump Pressure Adjustment</i>, page 92. See <i>Air Output, Air Intake and Lint Filters</i>, page 83. See <i>Fuel Filter</i>, page 94. See <i>Nozzle</i>, page 105. Clean photocell lens6. Replace flame-out control
Heater will not ignite, but motor runs for a short period of time	<ol style="list-style-type: none">1. Wrong pump pressure2. Carbon deposits on spark plug and/or improper gap3. Dirty fuel filter4. Dirt in nozzle5. Water in fuel tank	<ol style="list-style-type: none">1. See <i>Pump Pressure Adjustment</i>, page 92. See <i>Spark Plug</i>, page 93. See <i>Fuel Filter</i>, page 94. See <i>Nozzle</i>, page 105. Drain and flush fuel tank with clean kerosene. See <i>Storing, Transporting, or Shipping</i>, page 6
	<ol style="list-style-type: none">6. Electronic ignitor not grounded7. Bad electronic ignitor	<ol style="list-style-type: none">6. Make sure electronic ignitor mounting is tight7. Replace electronic ignitor
Motor does not start when heater is plugged in, fan rotates slowly or does not turn	<ol style="list-style-type: none">1. Thermostat setting is too low2. Flame-out control not reset3. Solid state relay not allowed to reset4. Binding pump rotor	<ol style="list-style-type: none">1. Turn thermostat knob to a higher setting2. Press flame-out control reset button3. Wait two minutes before trying to restart heater4. If fan is hard to turn, see <i>Pump Rotor</i>, page 10

 **WARNING: High voltage!**

L.B. WHITE

KEROSENE PORTABLE FORCED AIR HEATER

SERVICE PROCEDURES

⚠ WARNING: Never service heater while it is plugged in, operating, or hot. Severe burns and electrical shock can occur.

UPPER SHELL REMOVAL

1. Remove screws along each side of heater using 5/16" nut-driver. These screws attach upper and lower shells together.
2. Lift upper shell off.
3. Remove fan guard.

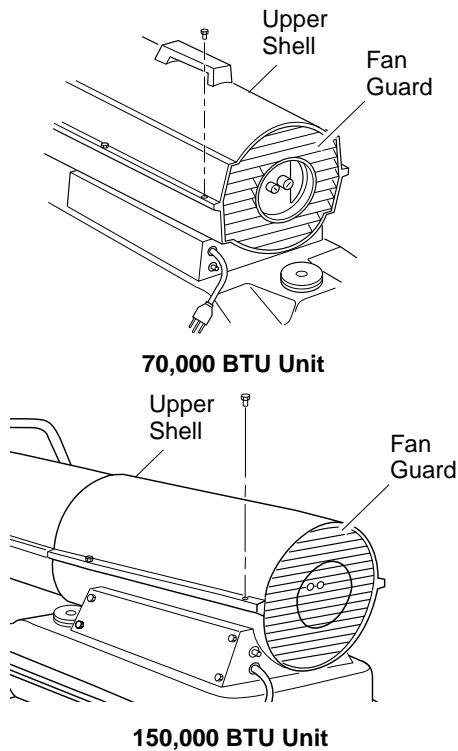


Figure 4 - Upper Shell Removal

FAN

IMPORTANT: Remove fan from motor shaft before removing motor from heater. The weight of the motor resting on the fan could damage the fan pitch.

1. Remove upper shell (see column 1).
2. Use 1/8" allen wrench to loosen setscrew which holds fan to motor shaft.
3. Slip fan off motor shaft.
4. Clean fan using soft cloth moistened with kerosene or solvent.
5. Dry fan thoroughly.
6. Replace fan on motor shaft. Place fan hub flush with end of motor shaft (see Figure 5).
7. Place setscrew on flat of shaft. Tighten setscrew firmly (40-50 inch-pounds).
8. Replace fan guard and upper shell.

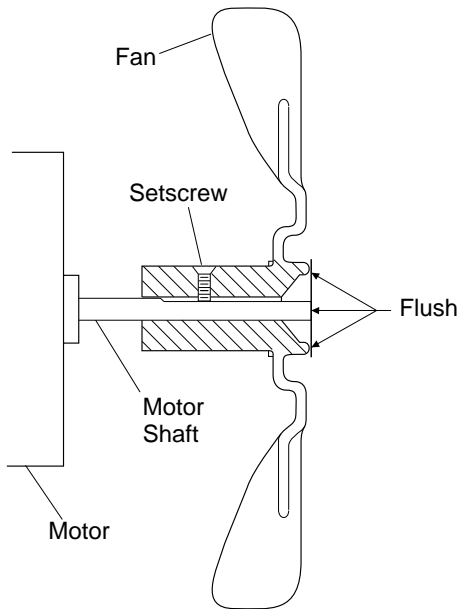


Figure 5 - Fan Cross Section

AIR OUTPUT, AIR INTAKE, AND LINT FILTERS

1. Remove upper shell (see column 1).
2. Remove filter end cover screws using 5/16" nut-driver.
3. Remove filter end cover.
4. Replace air output and lint filters.
5. Wash or replace air intake filter (see *Preventative Maintenance Schedule*, page 6).
6. Replace filter end cover.
7. Replace fan guard and upper shell.

IMPORTANT: Do not oil filters.

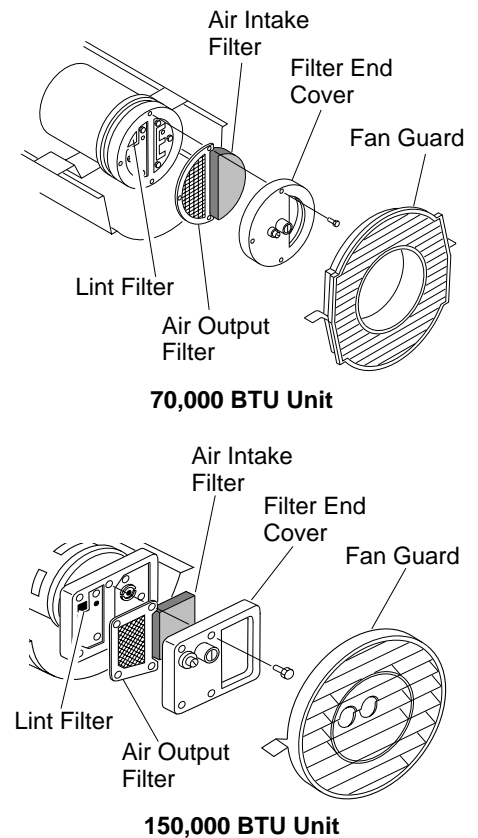


Figure 6 - Air Output, Air Intake, and Lint Filters

SERVICE PROCEDURES

Continued

PUMP PRESSURE ADJUSTMENT

1. Remove pressure gauge plug from filter end cover.
2. Install accessory pressure gauge (part number 500-20907).
3. Start heater (see *Operation*, page 5). Allow motor to reach full speed.
4. Adjust pressure. Turn relief valve to right to increase pressure. Turn relief valve to left to decrease pressure.

Correct Pump Pressure

70,000 BTU Unit: 4.0 PSI

150,000 BTU Unit: 5.0 PSI

5. Remove pressure gauge. Replace pressure gauge plug in filter end cover.

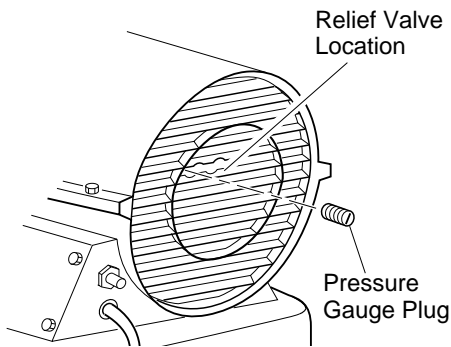


Figure 7 - Pressure Gauge Plug Removal
150,000 BTU Unit Shown

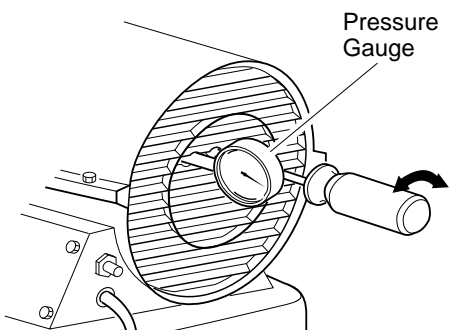


Figure 8 - Adjusting Pump Pressure
150,000 BTU Unit Shown

FUEL FILTER

1. Remove side cover screws using 5/16" nut-driver.
2. Remove side cover.
3. Pull upper fuel line off fuel filter neck.
4. Carefully pry bushing, fuel filter, and lower fuel line (150,000 BTU unit only) out of fuel tank.
5. Wash fuel filter with clean fuel and replace in tank.
6. Attach upper fuel line to fuel filter neck.
7. Replace side cover.

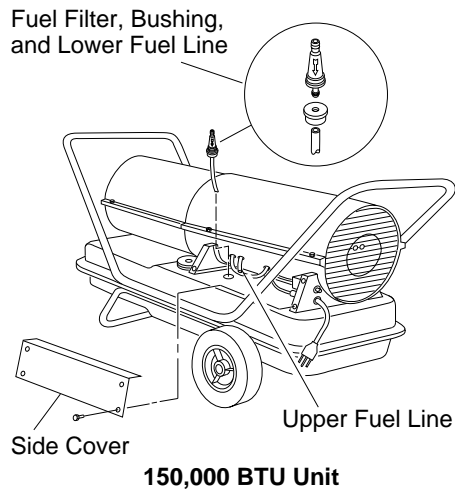
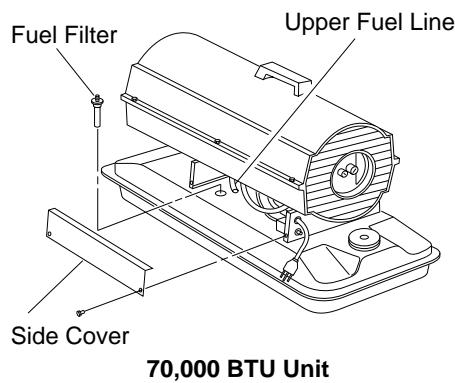


Figure 9 - Fuel Filter Removal

SPARK PLUG

1. Remove upper shell (see page 8).
2. Remove fan (see page 8).
3. Remove spark plug wire from spark plug.
4. Remove spark plug from burner head using 13/16" open-end wrench.
5. Clean and regap spark plug electrodes as follows:
70,000 BTU unit – .055" gap
150,000 BTU unit – .075" gap
6. Install spark plug in burner head.
7. Attach spark plug wire to spark plug.
8. Replace fan (see page 8).
9. Replace fan guard and upper shell.

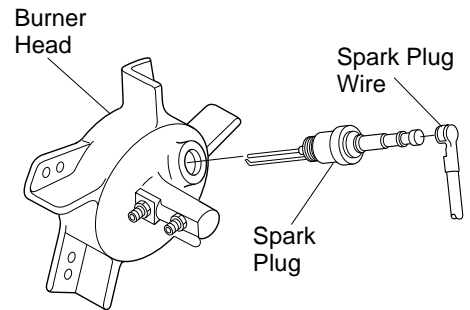


Figure 10 - Spark Plug Removal

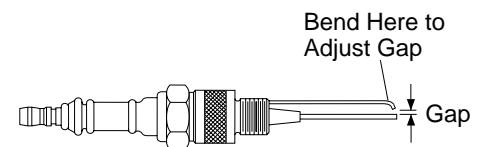


Figure 11 - Spark Plug Gap

L.B. WHITE

KEROSENE PORTABLE FORCED AIR HEATER

SERVICE PROCEDURES

Continued

NOZZLE

1. Remove upper shell (see page 8).
2. Remove fan (see page 8).
3. Remove fuel and air line hoses from burner head.
4. Remove spark plug wire from spark plug.
5. Remove spark plug from burner head using 13/16" open-end wrench.
6. Remove three screws using 5/16" nut-driver and remove burner head from combustion chamber.
7. Place burner head into vise and lightly tighten.
8. Carefully remove nozzle from burner head using 5/8" socket wrench (see Figure 13).
9. Blow compressed air through face of nozzle. This will free any dirt in nozzle area.
10. Inspect nozzle seal for damage.
11. Replace nozzle into burner head and tighten firmly (80-110 inch-pounds).
12. Attach burner head to combustion chamber.
13. Install spark plug in burner head.
14. Attach spark plug wire to spark plug.
15. Attach fuel and airline hoses to burner head.
16. Replace fan (see page 8).
17. Replace fan guard and upper shell.

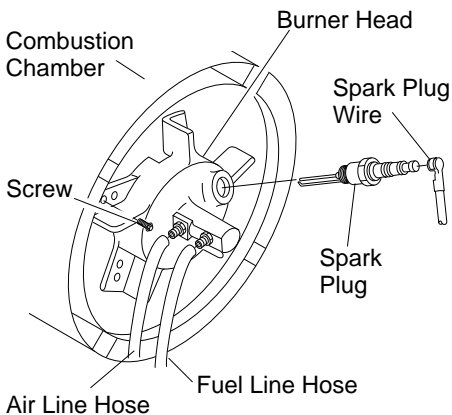


Figure 12 - Removing Burner Head

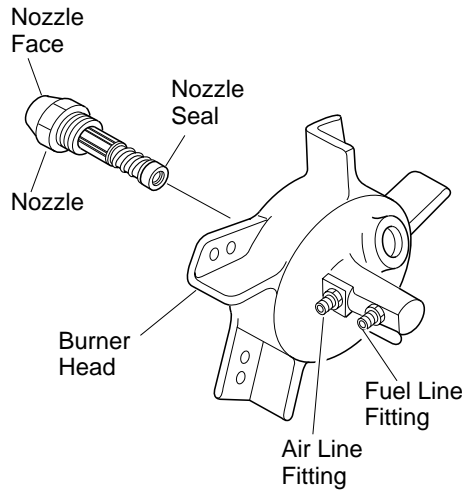


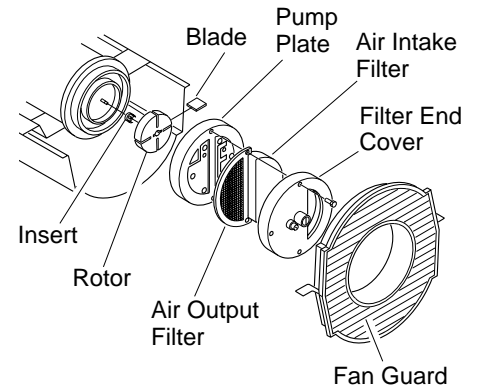
Figure 13 - Removing Nozzle

PUMP ROTOR (Procedure if rotor is binding)

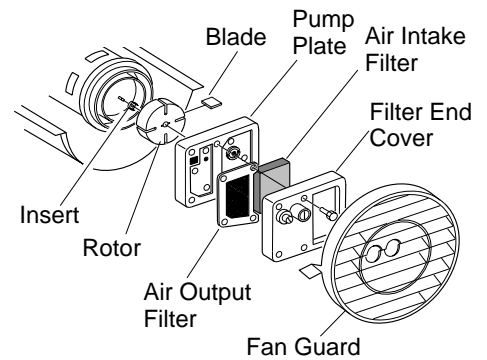
1. Remove upper shell (see page 8).
2. Remove filter end cover screws using 5/16" nut-driver.
3. Remove filter end cover and air filters.
4. Remove pump plate screws using 5/16" nut-driver.
5. Remove pump plate.
6. Remove rotor, insert, and blades.
7. Check for debris in pump. If debris is found, blow out with compressed air.
8. Install insert and rotor.
9. Check gap on rotor. Adjust to .003"/.004" if needed (see Figure 15).
10. Install blades, pump plate, air filters, and filter end cover.
11. Replace fan guard and upper shell.
12. Adjust pump pressure (see page 9).
13. Perform steps 1 through 6 above.
14. Place fine grade sandpaper (600 grit) on flat surface. Sand rotor lightly in "figure 8" motion four times (see Figure 16).
15. Reinstall insert and rotor.
16. Perform steps 10 through 12 above.

Note: Rotate rotor one full turn to insure the gap is .003"/.004" at tightest position. Adjust if needed.

Note: If rotor is still binding, proceed as follows.



70,000 BTU Unit



150,000 BTU Unit

Figure 14 - Rotor Location

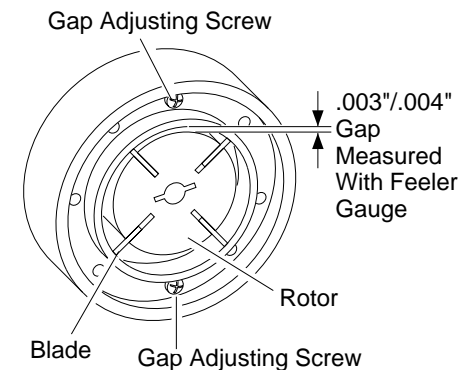


Figure 15 - Gap Adjusting Screw Locations

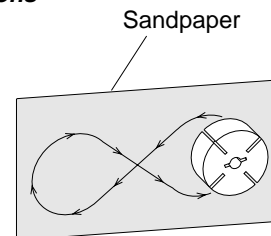


Figure 16 - Sanding Rotor

OWNER'S MANUAL

SPECIFICATIONS

	CP070AK	CP150AK
Output Rating (Btu/Hr.)	70,000	150,000
Fuel	Use Only Kerosene or No. 1 Fuel Oil	
Fuel Tank Capacity (U.S. Gal.)	5.0	13.5
Fuel Consumption (Gal. Per Hr.)	0.52	1.10
Electric Requirements	120 V/60 Hz (Same all models)	
Amperage (Normal Run)	2.5	4.5
Hot Air Output (CFM)	250	500
Motor RPM	3450 (Same all models)	
Motor HP	1/8	1/5
Shipping Weight (Approx. lbs.)	37	67
Heater Weight Without Fuel (Approx. lbs.)	32	56

WIRING DIAGRAM

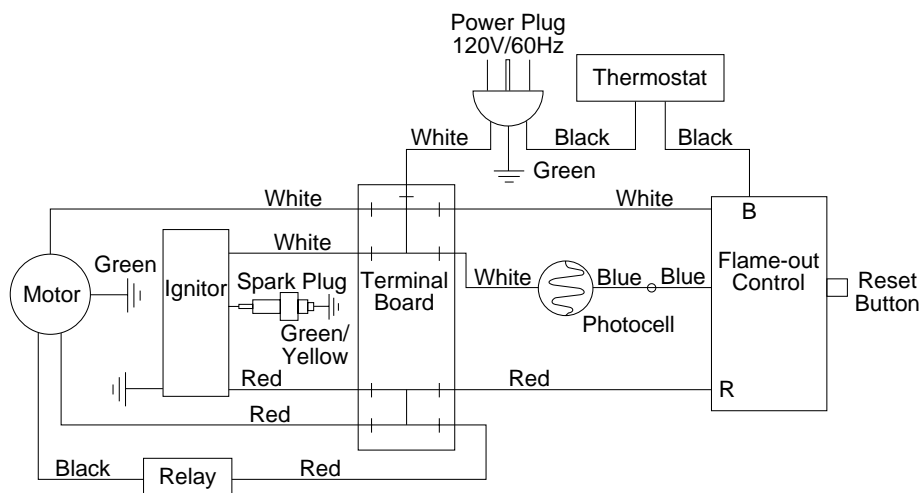


Figure 17 - Wiring Diagram

MAINTENANCE KITS

Kit	70,000 BTU Unit	150,000 BTU Unit
Flame-Out Control	500-20904	500-20904
Spark Plug	500-20905	500-20905
Air Gauge Kit	500-20907	500-20907
Fuel Tank Filter Screen	500-20906	500-20906
Filter Kit	500-20903	500-20901
Nozzle Kit	500-20908	500-20909
Rotor/Air Pump Kit	500-20900	500-20900
Photocell	500-20910	500-20910
Pump Adjustmnet	500-20902	500-20902
Handle	500-20911	500-20912

REPLACEMENT PARTS

Note: Use only original replacement parts. This will protect your warranty coverage for parts replaced under warranty.

PARTS UNDER WARRANTY

Contact authorized dealer from whom you purchased this product. If they cannot supply original replacement part(s), call L.B.WHITE'S Technical Service Department at 1-800-345-7200 for referral information.

When contacting your dealer or L.B. WHITE, have ready:

- your name
- your address
- model number of your heater
- how heater was malfunctioning
- purchase date

Usually, we will ask you to return the defective part to the factory.

PARTS NOT UNDER WARRANTY

Contact authorized dealers of this product. If they cannot supply original replacement part(s), call L.B.WHITE'S at 1-800-345-7200 for referral information.

When calling L.B.WHITE, have ready:

- model number of your heater
- the replacement part number

TECHNICAL SERVICE

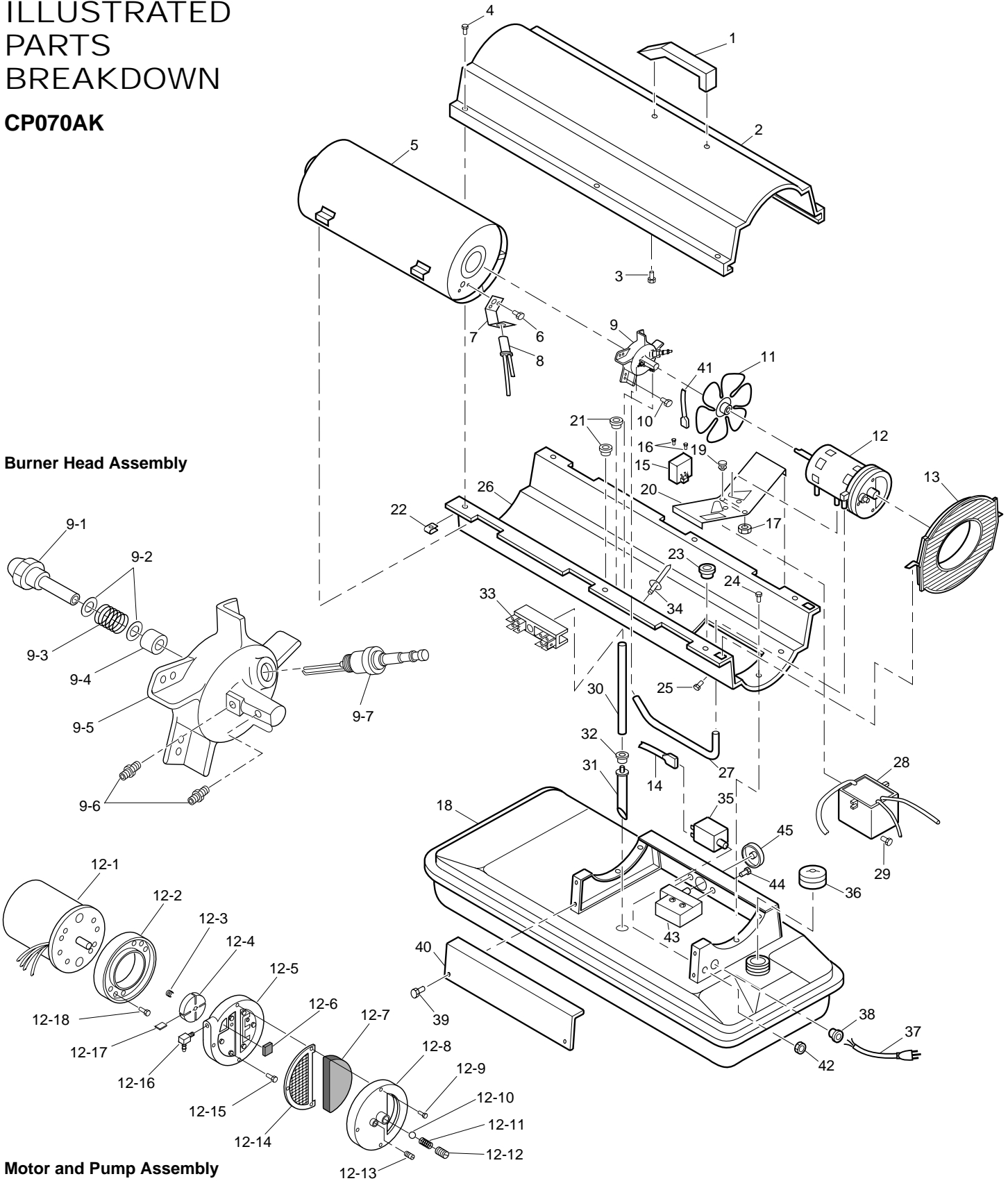
You may have further questions about installation, operation, or troubleshooting. If so, contact L.B. White's Technical Service Department at 1-800-345-7200.

L.B. WHITE

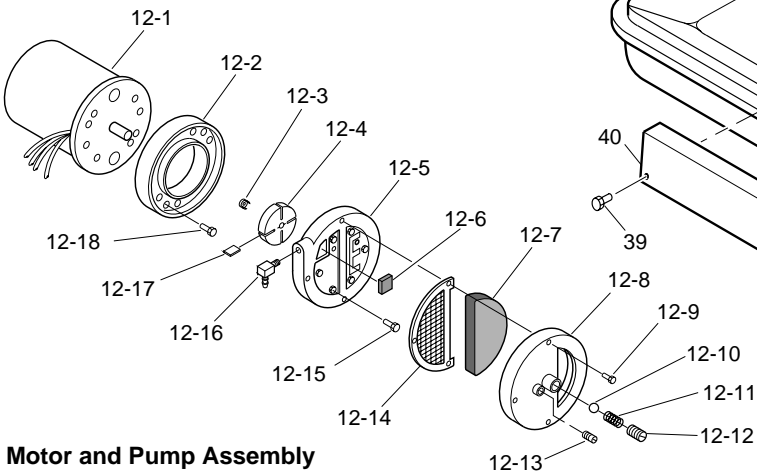
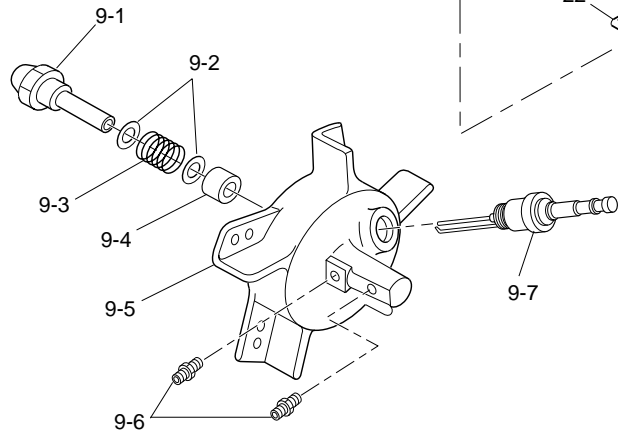
KEROSENE PORTABLE FORCED AIR HEATER

ILLUSTRATED PARTS BREAKDOWN

CP070AK



Burner Head Assembly



Motor and Pump Assembly

OWNER'S MANUAL

PARTS LIST

This list contains replaceable parts used in your heater. When ordering parts, follow the instructions listed under *Replacement Parts* on page 11 of this manual.

CP070AK

KEY NO.	PART NUMBER	PART DESCRIPTION	QTY.	KEY NO.	PART NUMBER	PART DESCRIPTION	QTY.
1	130-20783	Handle	1	17	130-20818	Hex Lock Nut, 1/4-20	2
2	130-20772	Upper Shell	1	18	130-20777	Fuel Tank (K70)	1
3	120-20807	Screw, #10-16 x 3/4"	2	19	130-20924	Rubber Bumper	2
4	130-20805	Screw, #10-16 x 1/2"	6	20	130-20864	Motor Bracket	1
5	130-20774	Combustion Chamber	1	21	130-20931	Bushing	2
6	130-20808	Screw, #6-32 x 3/8"	2	22	130-20936	Clip Nut	6
7	130-20825	Photocell Bracket	1	23	130-20932	Bushing	1
8	130-20827	Photocell Assembly	1	24	130-20806	Screw, #10-16 x 3/8"	6
9	400-20831***	Burner Head Assembly	1	25	130-20810	Screw, #8-32 x 3/8"	1
9-1	130-20762	Nozzle with Sleeve	1	26	130-20773	Lower Shell	1
9-2	130-20763	Nozzle Seal Washer	2	27	130-20948	Airline	1
9-3	130-20764	Nozzle Seal Spring	1	28	120-20888	Ignitor Kit	1
9-4	130-20765	Nozzle Sleeve	1	29	130-20807	Screw, #10-16 x 3/4"	2
9-5	130-20838	Burner Head Body	1	30	130-20949	Fuel Line	1
9-6	130-20833	Barb Fitting	2	31	130-20950	Fuel Filter (With Bushing)	1
9-7	130-20830	Spark Plug	1	32	130-20933	Rubber Bushing	1
10	130-20805	Screw, #10-16 x 1/2"	3	33	120-20886	Terminal Board	1
11	130-20843	Fan	1	34	130-20927	Rivet	1
12	400-20855***	Motor and Pump Assembly	1	35	120-20875	Flame-Out Control	1
12-1	120-20856	Motor	1	36	130-20944	Fuel Cap Kit (Includes Gasket)	1
12-2	130-20857	Pump Body	1	37	120-20894	Power Cord	1
12-3	130-20858	Insert	1	38	130-20947	Strain Relief Bushing	1
12-4	130-20859	Rotor	1	39	130-20806	Screw, #10-16 x 3/8"	2
12-5	130-20876	Pump End Cover	1	40	130-20951	Side Cover	1
12-6	130-20981	Lint Filter	1	41	120-20884	Wire Assembly (Red, 16")	1
12-7	130-20878	Intake Filter	1	42	130-20822	Hex Nut, 3/8 - 27	1
12-8	130-20881	Filter End Cover	1	43	120-20899	Thermostat	2
12-9	130-20813	Screw, #10-32 x 1"	3	44	130-20809	Screw, #6-32 x 1/4"	1
12-10	130-20917	Adjusting Screw	1	45	130-20928	Thermostat Knob	1
12-11	130-20916	Pressure Relief Spring	1	PARTS AVAILABLE - NOT SHOWN			
12-12	130-20918	Plug	1		150-20802	General Info. Decal	1
12-13	130-20915	Steel Ball (1/4" Dia.)	1		130-20921	Combustion Chamber Ground Wire	1
12-14	130-20919	Output Filter	1		130-20923	Wire Clip (Secures thermostat and power cord wires)	1
12-15	130-20813	Screw, #10-32 x 1"	6	OPTIONAL ACCESSORIES			
12-16	130-20835	Elbow, 90° (Barb Fitting)	1		500-20900	Rotor Kit	
12-17	130-20860	Blade	4		500-20903	Filter Kit	
12-18	130-20814	Screw, #10-32 x 5/8"	2		500-20902	Pump Kit	
13	130-20929	Fan Guard	1				
14	120-20883	Wire Assembly (Red, 6")	1				
15	120-20889	Solid State Relay	1				
16	130-20812	Screw, #8-18 x 1/2"	2				

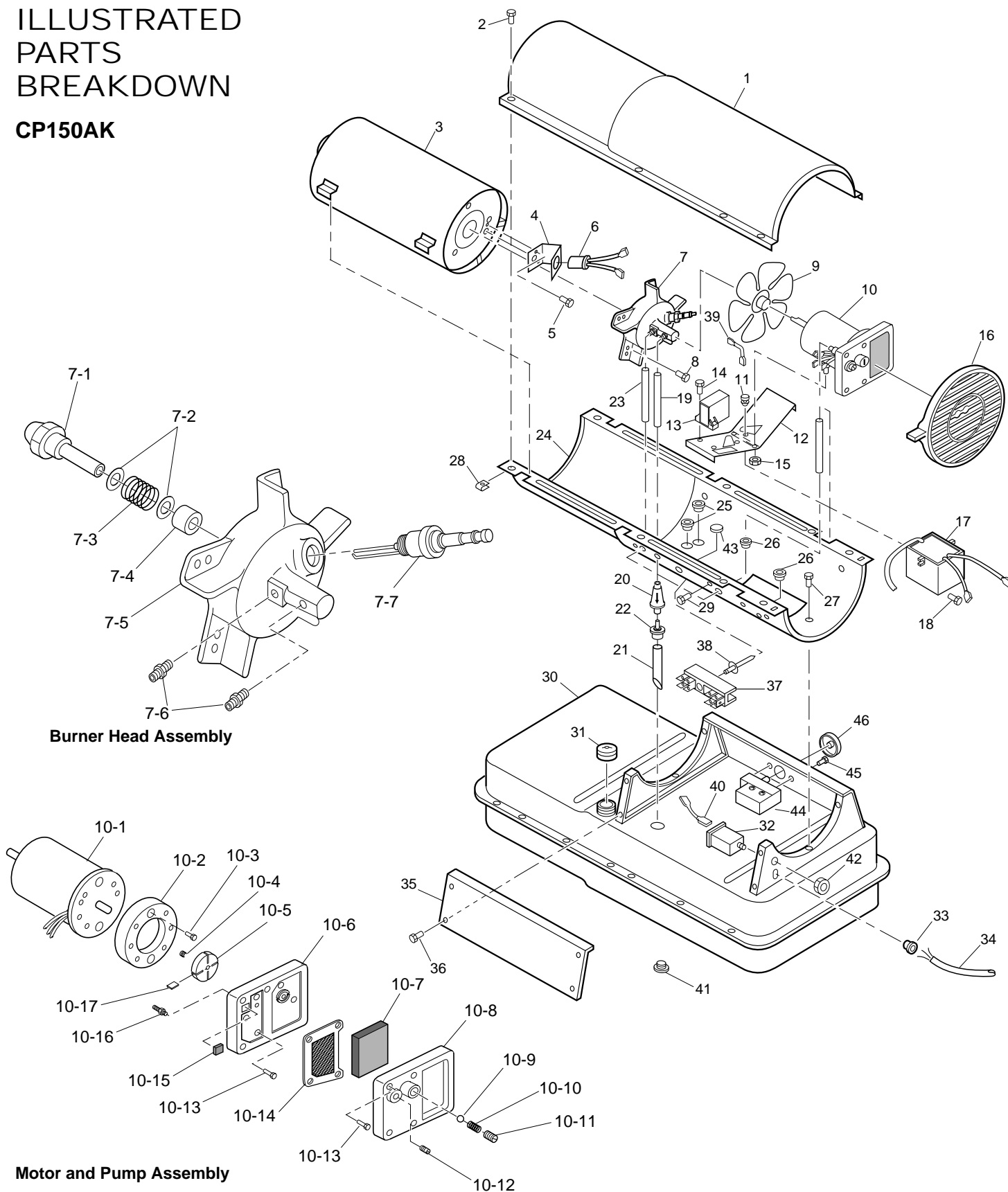
*** Not available as an assembly.

L.B.WHITE

KEROSENE PORTABLE FORCED AIR HEATER

ILLUSTRATED PARTS BREAKDOWN

CP150AK



OWNER'S MANUAL

PARTS LIST

This list contains replaceable parts used in your heater. When ordering parts, follow the instructions listed under *Replacement Parts* on page 11 of this manual.

CP150AK

KEY NO.	PART NUMBER	DESCRIPTION	QTY.	KEY NO.	PART NUMBER	DESCRIPTION	QTY.
1	130-20770	Upper Shell	1	18	130-20807	Screw, #10-16 x 3/4"	2
2	130-20805	Screw, #10-16 x 1/2"	8	19	130-20952	Fuel Line	1
3	130-20775	Combustion Chamber	1	20	130-20953	Fuel Filter	1
4	130-20825	Photocell Bracket	1	21	130-20954	Fuel Line Tube	1
5	130-20808	Screw, #6-32 x 3/8"	2	22	130-20933	Rubber Bushing	1
6	130-20827	Photocell Assembly	1	23	130-20955	Airline	1
7	400-20832***	Burner Head Assembly	1	24	130-20771	Lower Shell	1
7-1	130-20766	Nozzle with Sleeve	1	25	130-20934	Bushing	2
7-2	130-20763	Nozzle Washer	2	26	130-20935	Bushing	2
7-3	130-20764	Nozzle Spring	1	27	130-20805	Screw, #10-16 x 1/2"	6
7-4	130-20765	Nozzle Sleeve	1	28	130-20936	Clip Nut	8
7-5	130-20837	Burner Head Body	1	29	130-20810	Screw, #8-32 x 3/8"	1
7-6	130-20834	Barb Fitting	2	30	130-20778	Fuel Tank	1
7-7	130-20830	Spark Plug	1	31	130-20944	Fuel Cap (Includes Gasket)	1
8	130-20805	Screw, #10-16 x 1/2"	3	32	120-20875	Flame-Out Control	1
9	130-20844	Fan	1	33	130-20947	Strain Relief Bushing	1
10	400-20861***	Motor and Pump Assembly	1	34	120-20893	Power Cord	1
10-1	120-20862	Motor	1	35	130-20956	Side Cover	1
10-2	130-20857	Pump Body	1	36	130-20805	Screw, #10-16 x 1/2"	4
10-3	130-20814	Screw, #10-32 x 5/8"	2	37	120-20886	Terminal Board	1
10-4	130-20858	Rotor Insert	1	38	130-20927	Rivet	1
10-5	130-20859	Pump Rotor	1	39	120-20885	Wire Assembly (Red, 18")	1
10-6	130-20877	Pump End Cover	1	40	120-20883	Wire Assembly (Red, 6")	1
10-7	130-20879	Intake Filter	1	41	130-20945	Drain Plug (Includes "o" Ring)	1
10-8	130-20882	Filter End Cover	1	42	130-20822	Hex Nut, 3/8 - 27	1
10-9	130-20915	Steel Ball, 1/4" Diameter	1	43	130-20957	Button Plug	1
10-10	130-20916	Relief Spring	1	44	120-20899	Thermostat	1
10-11	130-20917	Adjusting Screw	1	45	130-20809	Screw, #6-32 x 1/4"	2
10-12	130-20918	Plug	1	46	130-20928	Thermostat Knob	1
10-13	130-20813	Screw, #10-32 x 1"	10	PARTS AVAILABLE - NOT SHOWN			
10-14	130-20920	Output Filter	1		150-20801	General Info. Decal	1
10-15	130-20880	Lint Filter	1		130-20922	Combustion Chamber	
10-16	130-20832	Barb Fitting	1			Grounding Wire	1
10-17	130-20860	Blade	4		130-20923	Wire Clip (Secures thermostat and power cord wires)	1
11	130-20924	Rubber Bumper	2	OPTIONAL ACCESSORIES			
12	130-20863	Motor Mounting Bracket	1		500-20900	Rotor Kit	
13	120-20889	Solid State Relay	1		500-20901	Filter Kit	
14	130-20812	Screw, #8-18 x 1/2"	2		500-20902	Pump Kit	
15	130-20818	Hex Lock Nut, 1/4-20	2				
16	130-20930	Fan Guard	1				
17	120-20888	Ignitor Kit	1				

*** Not available as an assembly.

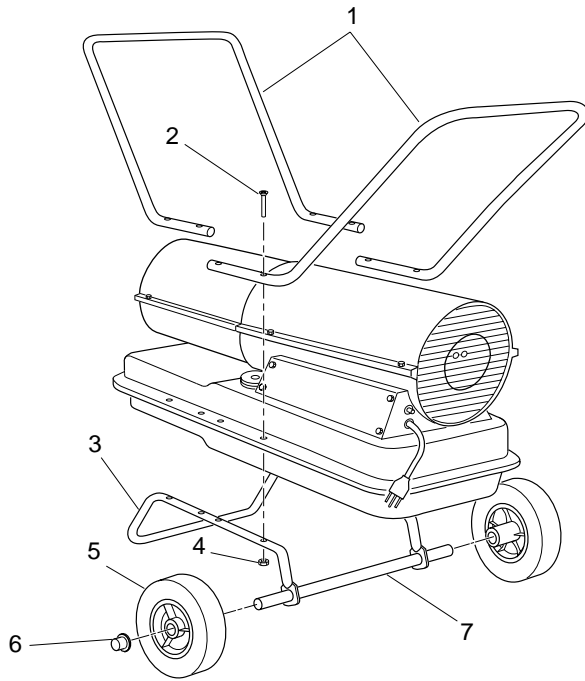
L.B. WHITE

KEROSENE PORTABLE FORCED AIR HEATER

PARTS LIST

WHEELS AND HANDLE PARTS LIST

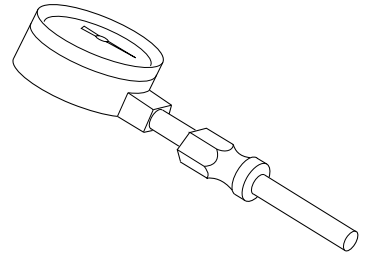
KEY NO.	PART NUMBER	PART DESCRIPTION	150 MODEL QTY.
1	130-20782	Handles	2
2	130-20853	Screw, #10-24 x 1 3/4"	8
3	130-20850	Wheel Support Frame	1
		Hex Nut, #10-24	8
4	130-20851	Wheel	2
5	130-20854	Cap Nut	2
6	130-20852	Axle	1



ACCESSORIES

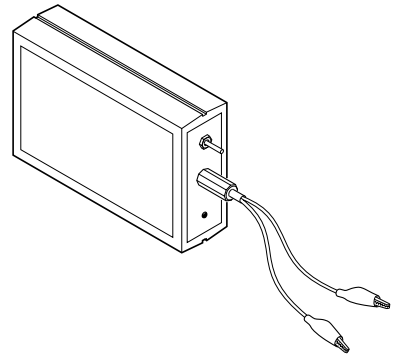
Purchase accessories and parts from your nearest dealer or service center. If they can not supply these parts, contact L.B. White at 1-800-345-7200 for referral information.

L.B. White Co., Inc.
W6636 L.B. White Road
Onalaska, WI 54650
1-800-345-7200



AIR GAUGE KIT - 500-20907

Special tool to check pump pressure. For all models.



FLAME-OUT CONTROL/PHOTOCELL TESTER - 500-20913

Special tool used to test the flame-out control and photocell.

Thank
you

for purchasing L. B. White. This L. B. White heater incorporates the benefits from the most experienced manufacturer of heating products using state-of-the-art technology.

If you have any suggestions or comments, please call us toll-free at 1-800-345-7200 or write or fax us at:

L.B. White Co., Inc.
W6636 L.B. White Road
Onalaska, Wisconsin 54650
Fax: 608 783-6115

I. WARRANTY

A. Equipment

L.B. White Co., Inc. warrants that the component parts of its equipment are free from defects in material and workmanship, when properly operated and maintained in accordance with the maintenance instructions, safety guides and labels contained with each unit. If, **within 12 months from the date of purchase by the end user**, any component is found to be defective, L. B. White Co., Inc. will, at its option, repair or replace the defective part or equipment with a new part or equipment, F.O.B., Onalaska, Wisconsin.

B. Parts

L. B. White Co., Inc. warrants that replacement parts purchased from the company and used on the appropriate L. B. White equipment are free from defects both in material and workmanship for **12 months from the date of purchase by the end user**. Warranty is automatic if a component is found defective within 12 months of the date code marked on the part. If the defect occurs more than 12 months later than the date code but within 12 months from the date of purchase by the end user, a copy of a bill of sale will be required to establish warranty qualification.

II. GENERAL INFORMATION

IMPORTANT

This Owner's Manual and all safety-related information as shipped with this unit should be kept by the owner for future reference.

Read this Owner's Manual and any other safety-related information accompanying this product before attempting to use or service it.

Save this manual and all other safety-related information for future reference.

This Manual will instruct you in the service and care of your unit. The parts lists within this manual are designed for ease of parts selection. Wherever possible, the parts list allows parts selection without use of the model number. Parts may be selected by referring to applicable illustrations.

Contact your local L. B. White distributor or the L. B. White Co., Inc. for assistance or if you have any questions about the use of the equipment or its application.

The L. B. White Co., Inc. has a policy of continuous product improvement. It reserves the right to change specifications and design without notice.



104041 01

NOT A UPC

L.B.WHITE®

W6636 L.B. White Rd., Onalaska, WI 54650 ■ (800) 345-7200 ■ (608) 783-5691 ■ Fax: (608) 783-6115

104041-01
Rev. B
07/98
150-20761