

B50A Spec. 5003605 1150090 08 423-1

When ordering your part, be sure to provide all pertinent facts when you call or visit your service dealer.

The model and serial number of your portable heater will be found on a decal toward the rear (motor end) of you unit.

When ordering repair parts always give the following:

A) Part Number

B) Model Number

C) Description

NOTE: All painted service parts will be shipped painted a common color of baked enamel finish coat. Parts may be repainted if necessary.

Key No.	Part Number	Part Name or Description	Qty.
1	M11084-26	Screw, Hex hd., 10-12 x 3/8 in.	6
	M30725-05	Upper Shell Assembly	1
2	M17539-9	. Rivet	4
3	M28153	. Handle	1
4	M30724AZ	. Shell	1
5	M30883-01	Chamber Assembly, Combustion	1
6	M11084-26	Screw, Hex hd., 10-12 x 3/8 in.	4
7	M29707-02	Burner Head Assembly	1
8	M29824	. Nut, Special 14 MM	1
9	M29835	. Spark Plug	1
10	M16741-18	. Ring, Retainer	1
	M29705-02	. Nozzle Adapter Assembly	1
11	M30875	.. Nozzle, Siphon	1
12	M29805	.. Adapter, Nozzle	1
13	M29615-01	..Bracket Assembly, Nozzle Adapter	1
14	M10908-1	Screw, Hex hd., 6-32 x 1/4 in.	2
15	M16656-3	Photocell and Bushing Assembly	1
16	M16660	Bracket, Photocell	1
17	M29652-02	Tubing, Fuel	1
18	M29814-01	Filter Assembly, Fuel	1
19	M10990-3	Bushing, Rubber	1
20	M11084-26	Screw	1
21	M13942-5	Connector, Wire	2
22	M13942-7	Connector, Wire	1
23	100576	Grommet	2
24	M30884	Fan	1
25	M16841-16	Wire Assembly	1
26	M28898-03	Safety Control Assembly	1
27	M29652-01	Tubing, Airline	1
28	M11084-26	Screw, Hex. hd.	2
29	M16697-02	Transformer Assembly	1
30	NTC-3C	Nut	4
31	M12461-50	Screw	4
32	M29800	Decal, Reset	1
33	M29750-02	Motor Package Assembly	1
34	M11084-26	Screw	4
35	M29616	Motor Mounting Bracket	1
36	M11271-6	Nut, Tinnerman	6
37	M11143-1	Bush.ng, Strain Relief	1
38	M10813-74	Extension Cord Assembly	1
39	M11084-26	Screw	4
	M12250-2	Nut, Tinnerman	4
41	M30763AZ	Shell, Lower	1
42	M30715-01	Cap, Fuel	1
43	M30873-01AA	Tank Assembly, Fuel	1
44	M11084-26	Screw, Hex., hd. 10-12 x 3/8 in.	2
45	M30726AA	Bracket End Cover	1
46	M11084-26	Screw, Hex. hd., 10-12 x 3/8 in.	2
47	M31348-01	Assembly, Filter Support	1
48	M50323	Screen, Filter	1

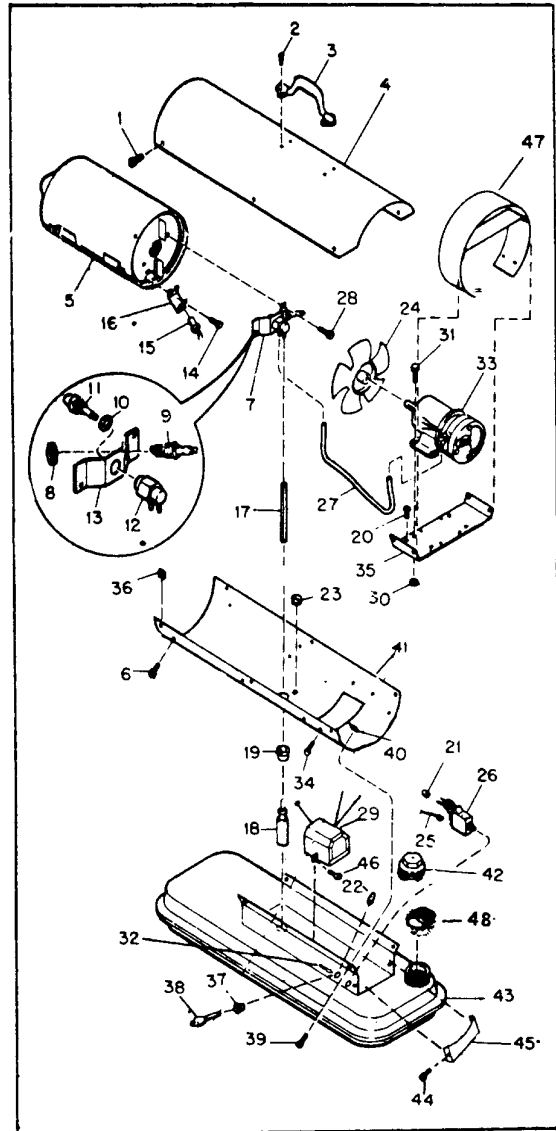


Figure 1, Exploded View

SPECIFICATIONS

Output Rating (BTU per hour)	50,000
Amperage (During normal run)	2.85
Starting	4.00
Air Pump Pressure (PSI)	3.6
Weight (Approx. lbs.) Shipping	34
Fuel Tank Capacity, U.S. Gallons	3.50
Fuel Consumption, Approx. U.S. Gal. per hour	0.36
Electrical Requirements Voltage	115
Cycles	60
Air Output (CFM)	145
Motor RPM	1675
Fuel	Kerosene or No. 1 Fuel Oil only
Duct	No Duct Recommended

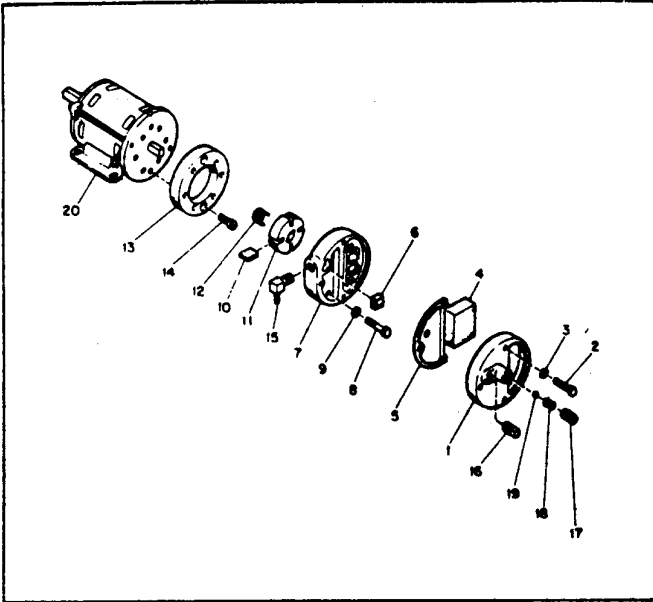


Figure 2. Motor Package Assembly

Key No.	Part Number	Part Name or Description	Qty.
1A	M29750-02	Motor Package Assembly	1
1	M29609	. End Cover, Filter	1
2	M12461-31	. Screw (Filter End Cover to Pump End Cover)	3
4	M29633	. Intake Air Filter	1
5	M29612-01	. Output Filter Assembly	1
6	M29632	. Filter, Lint	1
7	M29608	. End Cover, Pump (Port Plate)	1
8	M12461-31	. Screw (Pump Cover to Motor)	6
10	M8643	. Blade	4
11	M22456-1	. Rotor, Pump	1
13	M8645	. Pump Body	1
14	FHPF3-4C	. Screw (Pump Body to Motor)	2
15	M50016	. Elbow	1
16	M22997	. Plug, Socket Hd.	1
17	M27694	. Screw, Pressure Adjustment	1
18	M10993-1	. Spring, Compression (Pressure Relief)	1
19	M8940	. Ball, 1/4 in. dia.	1
20	M30876-01	. Motor	1

PARTS AVAILABLE—NOT SHOWN

- M50091 Manual, Instruction Form 4321
- M22743 . Decal, Warning
- M30728 . Decal, Wiring Diagram
- M29800 . Decal, Reset
- M20532-8 . Decal, Pump Pressure
- M31317 . Decal, Fuel
- M27424 . Decal, Mfg. by
- M50011 . Decal, Spark Plug
- M30732 . Decal, Tradename
- M50108 . Decal, Model Number
- M22898 . Decal, Name Plate

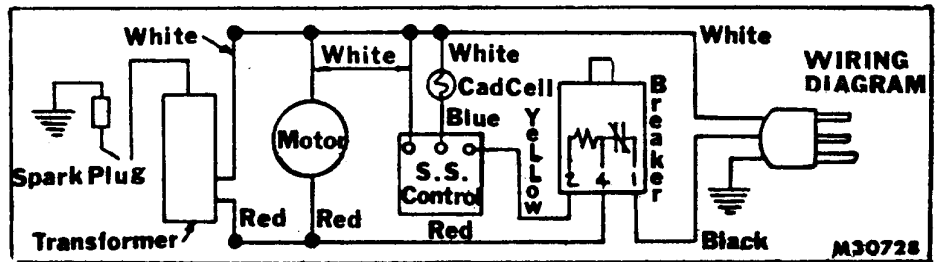


Figure 3. Wiring Diagram