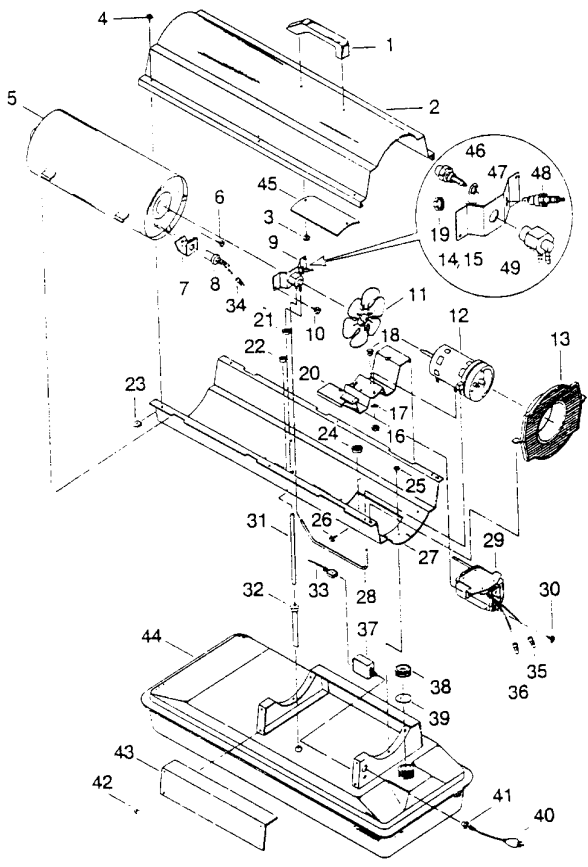


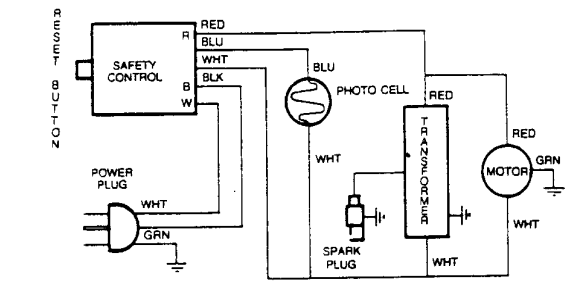
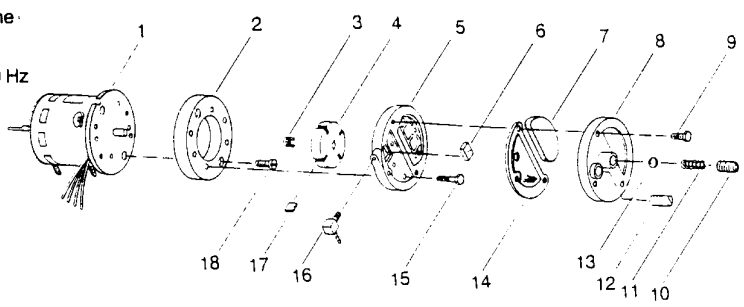
MODELS 2E510A & 2E511A



REF. NO.	PART NO.	DESCRIPTION	2E510A QTY.	2E511A QTY.
1	M51104-01	Handle	1	1
2	M50901-01AZ	Upper shell	1	1
3	M50589-01	Handle screw	2	2
4	M11084-27	Hex head screw #10-16 x 1/2	6	6
5	M50785-02	Assembly combustion chamber	1	1
6	M50785-04	Assembly combustion chamber	2	2
7	M10908-2	Hex head screw #6-32 x 3/8	1	1
8	M16660	Photo cell bracket	1	1
9	M16656-9	Photo cell assembly	1	1
10	M29707-04	Burner head assembly	1	1
11	M29707-03	Burner head assembly	2	2
12	M11084-26	Hex head screw #10-16 x 3/8	1	1
13	M30884	Fan 7 1/4" dia. — 1.437	1	1
14	M29750-05	Motor and pump assembly	1	1
15	M29750-04	Motor and pump assembly (See figure for parts reference)	1	1
16	M51105-01	Fan guard	1	1
17	M51013-01	Bracket	1	1
18	M29613-01	Bracket	1	1
19	NJC-4C	Hex jam nut	2	2
20	WLI-4C	Lockwasher	2	2
21	M50631	Rubber bumper	2	2
22	M29824	Nut, 1.4mm	1	1
23	M50784	Motor bracket	1	1
24	M30865-02	Bushing (wire from transformer to spark plug)	1	1
25	M25907	Bushing (photo cell wired)	6	6
26	M11271-8	Tinnerman nut	1	1
27	M50104-02	Bushing (wires)	1	1
28	M11084-26	Hex head screw #10-16 x 3/8	6	6
29	M15823-37	Grounding screw #8 x 1/4	1	1
30	M50902-01AZ	Lower shell	1	1
31	M29652-04	Rubber airline	1	1
32	M50570-03	Transformer	1	1
33	M11084-26	Hex head screw #10-16 x 3/8	2	2
34	M29652-05	Fuel line (Buna "n" rubber)	1	1
35	M50876-02	Assembly fuel filter	1	1
36	M50876-04	Assembly fuel filter	1	1
37	M9900-157	Wire assembly (red)	1	1
38	M13942-7	Wire connector (blue photo cell wire)	1	1
39	M13942-5	Wire connector (red wires)	1	1
40	M13942-6	Wire connector (white wires)	1	1
41	M50300-01	Flame out control (safety)	1	1
42	M51000-01	Fuel tank cap	1	1
43	M51002-01	Fuel tank and cap gasket	1	1
44	M10813-81	Power cord	1	1
45	M11143-1	Strain relief bushing	1	1
46	M11084-26	Hex head screw #10-16 x 3/8	2	2
47	M50899-03AA	Side cover	1	1
48	M50811-04AA	Fuel tank	1	1
49	M50811-05AA	Fuel tank	1	1
	M51108-01	Heat-shell shield	1	1
	M29681	Nozzle	1	1
	M50597	Nozzle	1	1
	M16741-18	Retainer ring	1	1
	M29835	Spark plug	1	1
	M29805	Nozzle adapter	1	1

Specifications

MODEL	2E510A	2E511A
Output rating (Btu per hour)	30,000	50,000
Fuel		Kerosene
Fuel tank capacity (U.S. gallons)	3.00	4.00
Fuel consumption (approx. U.S. gal. per hour)	0.23	0.37
Electric requirements		120 volts, 60 Hz
Amperage (during normal run)	2.78	2.90
Starting amps	4	4
Motor RPM	1710	1730
Air output (CFM)	123	106
Air pump pressure (PSI)	3.00	3.60
Shipping weight (approx. lbs.)	42	43
Heater weight without fuel	35	36



REF. NO.	PART NO.	DESCRIPTION	2E510A QTY.	2E511A QTY.
	M29750-05	Motor and pump assembly	1	1
	M29750-04	Motor and pump assembly	1	1
	M50843-01	Motor	1	1
	M50843-02	Motor	1	1
1	M8645	Pump body	1	1
2	M22009	Insert	1	1
3	M22456-1	Rotor	1	1
4	M29608	End pump cover	1	1
5	M29632	Lint filter	1	1
6	M29633	Intake filter	1	1
7	M29609	End cover filter	1	1
8	M12461-31	Screw #10-32 x 1	3	3
9	M27694	Adjusting screw	1	1
10	M10993-1	Pressure relief spring	1	1
11	M22997	Plug	1	1
12	M8940	Steel ball 1/4" dia.	1	1
13	M29612-01	Output filter	1	1
14	M12461-31	Screw #10-32 x 1	6	6
15	M50016	Elbow 90°	1	1
16	M8643	Blade	4	4
17	FHPF3-4C	Screw #10-32 x 1/2	2	2