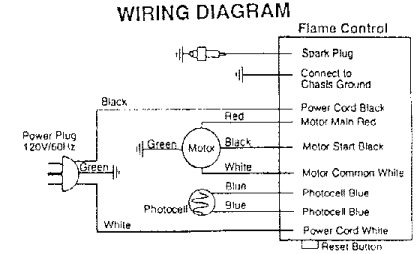
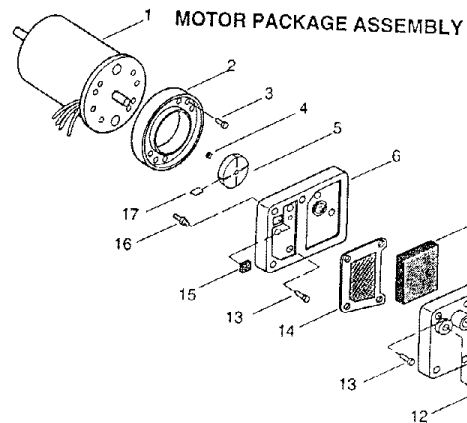
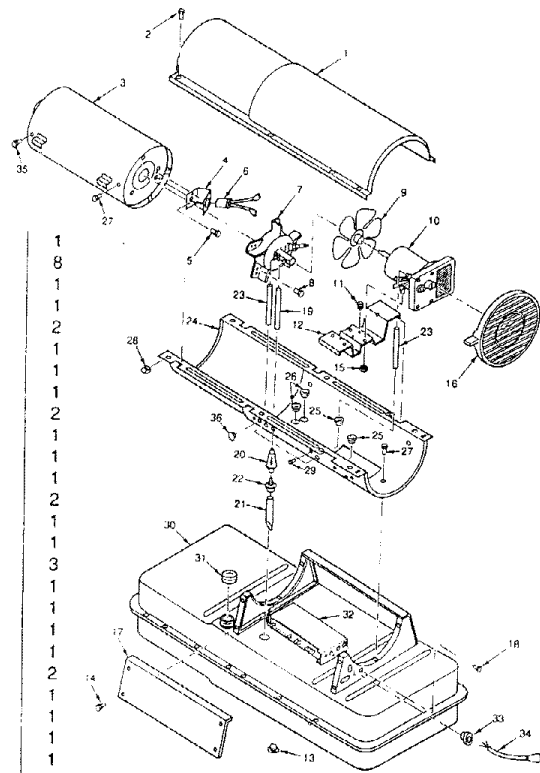


# Reddy R150M

Form # 101512-01  
Rev. A 5.94

1	098511-135	Upper Shell	1
2	100647-01	Screw, #10-16 x 1/2"	8
3	098512-29	Combustion Chamber	1
4	099229-01	Photocell Bracket	1
5	M10908-2	Screw, #6-32 x 3/8"	2
6	M16656-19	Photocell Assembly	1
7	***	Burner Head Assembly	1
7-1	HA3010	Nozzle with Sleeve	1
7-2	M10659-1	Nozzle Washer	1
7-3	M10809-1	Nozzle Spring	2
7-4	M8882	Nozzle Sleeve	1
7-5	M50924-03	Burner Head Body	1
7-6	M50820-02	Barb Fitting	1
7-7	HA3012	Spark Plug	2
7-8	100909-01	Washer	1
8	M11084-27	Screw, #10-16 x 1/2"	1
9	097293-01	Fan	3
10	***	Motor and Pump Assembly	1
10-1	097134-03	Motor (Split Phase)	1
10-2	079975-01	Pump Body	1
10-3	FHPF3-2C	Screw, #10-32 x 1/2"	1
10-4	M22009**	Rotor Insert	2
10-5	M22456-1**	Pump Rotor	1
10-6	M50545	Pump End Cover	1
10-7	M12179**	Intake Filter	1
10-8	M16545	Filter End Cover	1
10-9	M8940**	Steel Ball, 1/4" diameter	1
10-10	M10993-1**	Relief Spring	1
10-11	M27694**	Adjusting Screw	1
10-12	M22997**	Plug	1
10-13	M12461-31	Screw, #10-32 x 1"	10
10-14	M12244-1**	Output Filter	1
10-15	M11637**	Lint Filter	1
10-16	M50820-02	Barb Fitting	1
10-17	M8643**	Blade	4
11	M50631	Rubber Bumper	2
12	098138-02	Motor Mounting Bracket	1
13	M27417	Drain Plug (Includes "O" Ring)	1
14	M11084-27	Screw, #10-16 x 1/2"	4
15	NTC-4C	Hex Lock Nut, 1/4-20	2
16	M51114-01	Fan Guard	1
17	M51077-01AA	Side Cover	1
18	M11084-26	Screw, #10-16 x 3/8"	2
19	M51345-02	Fuel Line	1
20	M51150-01**	Fuel Filter	1
21	M51151-02	Fuel Line Tube	1
22	M10990-3	Rubber Bushing	1
23	M50814-03	Airline	1
24	098511-136	Lower Shell	1
25	M50104-01	Bushing	2
26	M50104-03	Bushing	2
27	M11084-27	Screw, #10-16 x 1/2"	6
28	M11271-8	Clip Nut	8
29	M15823-39	Screw, #8-18 x 1/4"	1
30	098513-68	Fuel Tank	1
31	097702-01	Fuel Cap (Includes Gasket)	1
32	100777-02	Microprocessor Control	1
33	M11143-1	Strain Relief Bushing	1
34	098219-26	Power Cord	1
35	099230-01	Shoulder Screw	2
36	099213-01	Button Plug	1

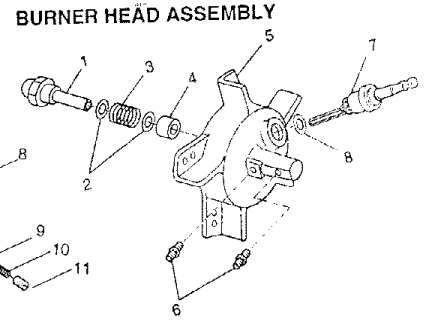


**OPTIONAL ACCESSORIES**

HA1210	Hang-up Thermostat
HA1180	Air Gauge Kit
HA2210	Fuel Tank Filter Screen
HA3004	Rotor Kit (M22456-1, M22009, M8643)
HA3017	Filter Kit (M11637, M12179, M12244-1, M51150-01)
HA3020	Pump Kit (M27694, M10993-1, M22997, M8940)

**PARTS AVAILABLE - NOT SHOWN**

097896-01	Wheels	2
M16801-2	Axle	1
M12831-3	Wheel Support Frame	1
HA2204	Front Handle	1
M12345-33	Screw, #10-24 x 1 3/4"	8
M28526	Nut cap	2
NTC-3C	Hex Lock Nut, #10-24	8
097204-05	Tradename Decal	
100830-01	Diagnostic Decal	
098224-18	General Information Decal	
100807-01	Owner's Manual	



## SPECIFICATIONS

Output Rating (BTU Per Hour)	150,000
Fuel	Kerosene or #1 fuel oil
Fuel Tank Capacity (U. S. Gallons)	13.5
Fuel Consumption (Approximate U.S. Gallons Per Hour)	1.10
Electric Requirements	120V/60Hz
Amperage (During Normal Run)	4.5
Starting Amps	10
Motor RPM	3450
Hot Air Output (Approximate CFM)	500
Air Pump Pressure (PSI)	5.0
Shipping Weight (Approximate Pounds)	65
Heater Weight Without Fuel (Approximate Pounds)	54

No Duct Recommended