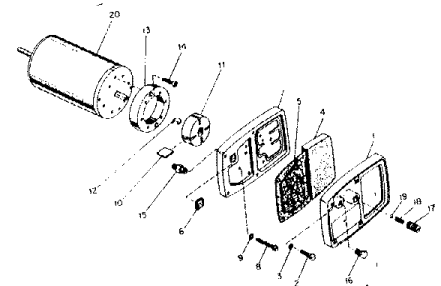
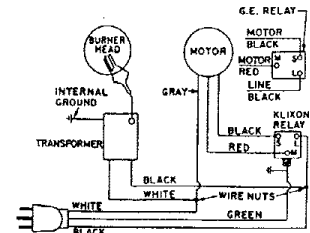


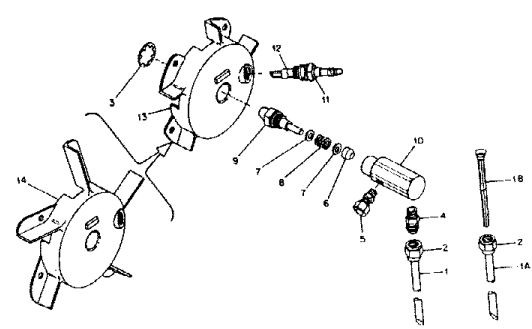
Reddy M85E spec# 2965G14

Form# 2393-1
6.69

1	M13134G3	Shell, Upper	¢	1	13	WLM-4	Lockwasher, 1/4 in.		
1	M17015G1	Shell, Upper	¢	-			(Motor Clamps)	2	
2	M16879	Deflector, Heat		-	14	NPC-4C	Nut, Hex, 1/4-20		
3	M16781G1	Combustion Chamber		1			(Motor Clamps)	2	
-	M16887G3	Combustion Chamber		-	15	M16777	Shell, Lower	¢	1
-	M11084-27	Screw (Combustion Chamber attaching, front)		-	16	M16810	Shell, Lower	¢	-
-	M11084-29	Screw (Combustion Chamber attaching, rear)	*	2	17	M11271-6	Screw (Upper Shell to Lower Shell)	*	6
4	M15995	Plug Button (Rear head of Combustion Chamber)	*	2	18	M12330	Nut, Tinnerman (Upper Shell to Lower Shell)		6
5	Reference	Plug Button (Rear head of Combustion Chamber)		-	19	M12330	Bracket, Shell Support		1
-	M11084-27	Reference <u>Burner Head Assembly</u> (See Figure 14)	@	1	-	M11084-27	Bracket, Shell Support		-
6	M16879	Screw (Burner Head to Combustion Chamber)	*	3	20	M15809	Screw (Support Bracket to Lower Shell and Fuel Tank)	*	4
6	M16804	Air Line	@	1	-	M100576	Screw (Lower Shell to Support Bracket)	*	2
7	M15807	Air Line	@	1	-	1000576	Grommet (Ignition Cable thru Lower Shell)		2
-	M16871	Strap, Retainer		1	21	M15809	Plug Button (for 17/32" dia. hole)		1
-	M11084-27	Strap, Retainer		-	22	M15995-2	Plug Button (for 7/16" dia. hole)		-
8	M12464	Screw (Retainer Strap to Lower Shell)	*	2	23	M12650-3	Capacitor (Alternate: M12650-4)		-
-	M17920	Fan, 20° Pitch (Alternate: M19566)		1	23	M12651	Clamp, Capacitor Mounting (for Mallory Capacitor)		-
-	SF4-2-1/2K	Fan, 20° Pitch		-	-	M16708	Clamp, Capacitor Mounting (for G-E Capacitor)		-
9	Reference	Setscrew, Soc. hd., cup pt, 1/4-28 (Fan to Motor Shaft)		2	-	M11084-27	Screw (M12651 Clamp to Motor Support Bracket)	*	-
10	M16661	Reference <u>Motor Package Assembly</u> (See Figure 15)	@	1	-	M15823-26	Screw (M16708 Clamp to Motor Support Bracket)	*	-
11	M13620	Clamp, Motor		4	-	ST2-8B	Screw (M16708 Clamp to Motor Support Bracket)	*	-
12	HC4-10C	Spacer, Motor Clamp		2	24	M16646	Screw (M16708 Clamp)	*	1
		Screw (Motor Clamps)	*	2	25	1000576	Bracket, Motor Support	*	6
					26	M17921	Grommet (Motor Leads Transformer, 5000-Volt (G-E))	@	1
						M17922	Transformer (Jefferson) Alternate for M17921	@	
						M11084-27	Transformer (Motor Leads Transformer, 5000-Volt (G-E))	@	1
						M11954	Transformer (Jefferson) Alternate for M17921	@	
					27	M11954	Screw (Transformer to Motor Support Bracket)	*	2
							Bushing, Strain Relief (Service Cord to Lower Shell)		1
					28	M15779G8	Service (Extension) Cord		1
						M15779G9	Service (Extension) Cord		1
					29	M13942-4	Connector (Wire Nut)		2
					30	M16797G1	Fuel Tank		1
					31	M3353	Cap, Fuel Tank (Used with M16797 and M16806G1 Fuel Tanks)	A	1
					31	M18051	Cap, Fuel Tank (Used with M18360G1 and M18371G1 Fuel Tanks)	B	1
					31A	M18053	Screen, Filler Neck (Used with M18360G1 and M18371G1 Fuel Tanks)	B	1
					32	M10490-3	Bushing, Rubber (Fuel Filter into Fuel Tank)		1
					33	M13990	Plug, Pipe, 1/4 in., Sq. hd. (Fuel Tank Drain) (Not Used)		1
					34		(Not Used)		
					35		(Not Used)		
					36	M11952	Bracket, Starting Relay Mounting	\$	1
						M11084-27	Screw (Relay Mounting Bracket to Lower Shell)	*\$	1
					37	M12462-3	Relay, Starting		1



- 1 M16789G2 . Filter Assy, Fuel @ 1
- 1 M16789G3 . Filter Assy, Fuel @ -
- 1A M16790-2 . Filter Tube @ (1)
- 1A M16790-3 . Filter Tube @ (1)
- 1B M17460 . Filter, Fuel (Used with M16790-2 or M16790-3 Filter Tube as alternate for M16789G2 or M16789G3) @ -
- 2 M13849 . Nut, Flare (1) 1



- 3 M16741-18 . Ring, Retaining 1
- M16787G4 . Nozzle Adapter Assy 1
- M16787G3 . Nozzle Adapter Assy -
- 4 M16791 . Connector, Male 1
- 5 M5976 . Connector, Male 1
- 6 M8882 . Sleeve, Nozzle Seal 1
- 7 M10659-1 . Washer, Nozzle Seal 2
- 8 M10809-1 . Spring, Nozzle Seal 1
- 9 M18048 . Nozzle, Aspirating, 0.61 gph 1
- M18022 . Nozzle, Aspirating, 1.1 gph -
- 10 M16535 . Adapter, Nozzle 1
- 11 M16895G1 . Spark Plug Assy @ 1
- 12 . (Not Available) -
- 13 M18023 . Body, Burner Head -
- 14 M16534 . Body, Burner Head 1

