

Figure 4. Exploded View of Model F-75 Heater

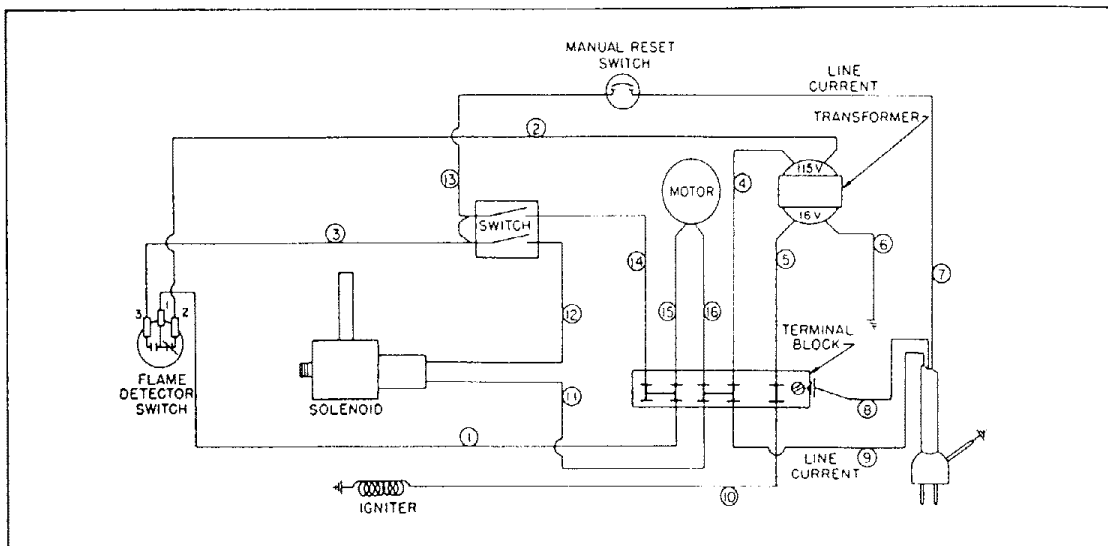


Figure 2. Wiring Diagram

Figure & Index No.	Part Number	Part Name	Quantity
4-1	M4396	Handle	1
4-2	WLI-4	Lock washer, int. teeth, 1/4 in.	2
4-3	RPC4-4	Screw, Phillips rd. hd., 1/4-20 x 1/2 in.	2
4-4	M4843	End cover	2
4-5	RPF3-5	Screw, Phillips rd. hd., No. 10-32 x 5/8 in.	8
4-6	NLF-3	Nut, Flex Loc No. 10-32	4
4-7	WP-3	Washer	8
4-8	M3353	Filler cap	1
4-9	M6620	Fuel tank assembly	1
4-10	M5855	Fuel filter assembly	1
4-11	M6920	Standpipe assembly	1
4-12	M6688	Screen	1
4-13	M6652	Drain pipe cap, 1/4 in.	1
4-14	M6588	Drain pipe	1
4-15	M6645	Leg assembly	2
4-16	M6611	Side panel	1
4-17	M8452	Control side panel	1
4-18	RF3-5	Screw, Rd. hd, No. 10-32 x 5/8 in.	8
4-19	WLI-3	Lock washer, int. teeth, No. 10	8
4-20	M5776	Plug button	1
4-21	M6613	Igniter access door	1
4-22	RF3-5	Screw, Rd. hd. sheet metal, No. 8 x 3/8 in.	1
4-23	M6618	Fuel line, tank to pump	1
4-24	M6621	Fuel line, pump to solenoid valve	1
4-25	M6617	Fuel line, valve to burner	1
4-26	M6665	Knob	1
4-27	M8450	Indicator plate	1
4-28	M6668	Switch	1
4-	M6789	Nut, for switch	1
4-	M6795	Nut, for switch	1
4-29	M6667	Metering valve	1
4-30	M8526	Solenoid valve	1
4-31	69248	Elbow	1
4-32	M6658	Flame detector switch	1
4-33	M6679	Flame detector shield assembly	1
4-34	STP2-3	Screw, Phillips rd. hd. sheet metal, No. 8 x 3/8 in.	2
4-35	M6659	Manual reset safety switch	1
4-36	STP2-3	Screw, Phillips rd. hd. sheet metal, No. 8 x 3/8 in.	2
4-37	M6650	Igniter and holder assembly	1
4-38	ST2-4	Screw Rd. hd, sheet metal, No. 8 x 1/2 in.	1
4-39	M6689	Gasket	1
4-40	M6578	Terminal block	1
4-41	STP2-8	Screw, Phillips rd. hd, sheet metal, No. 8 x 1 in.	1
4-	M5483-2	Extension cord assembly	1
4-	M6595	Motor, Grille, Transformer and Fan Assembly	1
4-42	M6609	Pump cap	1
4-43	M5705	Pump gasket	1
4-44	M5703	Pump impeller	1
4-45	RPC2-3	Screw, Phillips rd. hd. No. 8-32 x 3/8 in.	4
4-46	M5976	Connector	2
4-47	M4502	Fan	1
4-48	M5721	Motor	1
4-49	M5232	Grille	1
4-50	STP3-4B	Screw, Phillips rd. hd. sheet metal, blunt point No. 10 x 1/2 in.	4
4-51	RPC2-3	Screw, Phillips rd. hd. No. 8-32 x 3/8 in.	4
4-52	WLE2	Lock washer, external, No. 8	4
4-53	M5301-1	Transformer	1
4-54	STP2-2-1/2B	Screw, Phillips rd. hd. sheet metal, blunt point No. 8 x 5/16 in.	2
4-55	WLE2	Lock washer, external, No. 8	2
4-56	M6655	Burner plate assembly	1
4-57	STP2-3	Screw, Phillips rd. hd., sheet metal No. 8 x 3/8 in.	4
4-58	69248	Elbow	1
4-59	NJF8	Nut, jam, 1/2-20	1
4-60	M5675	Fin assembly	1
4-61	M6638	Fuel distributing plate	1
4-62	M6643	Spacer	6
4-63	RPC-2-7SS	Screw, Phillips rd. hd., stainless steel, No. 8-32 x 7/8 in.	7
4-64	NPC-2	Nut, hex, No. 8-32	7
4-65	M6656	Air turning vane assembly	1
4-66	M6600	Ceramic cloth pad	1
4-67	M8492	Pad support ring	1
4-68	M6606	Drip trough	1
4-69	M6653	Drip trough spacer	1
4-70	M6639	Fiberfrax drip trough gasket	1
4-71	M6627	Combustion chamber assembly	1
4-72	M5666	Perforated sleeve	1
4-73	STP-2-3	Screw, Phillips, rd. hd., sheet metal, No. 8 x 3/8 in.	3
4-74	M5659	Cone assembly	1
4-75	M6628	Combustion chamber	1
4-76	M6614	Outer shell assembly	1
4-77	ST2-3A	Screw, Phillips rd. hd. sheet metal No. 8 x 3/8 in.	1