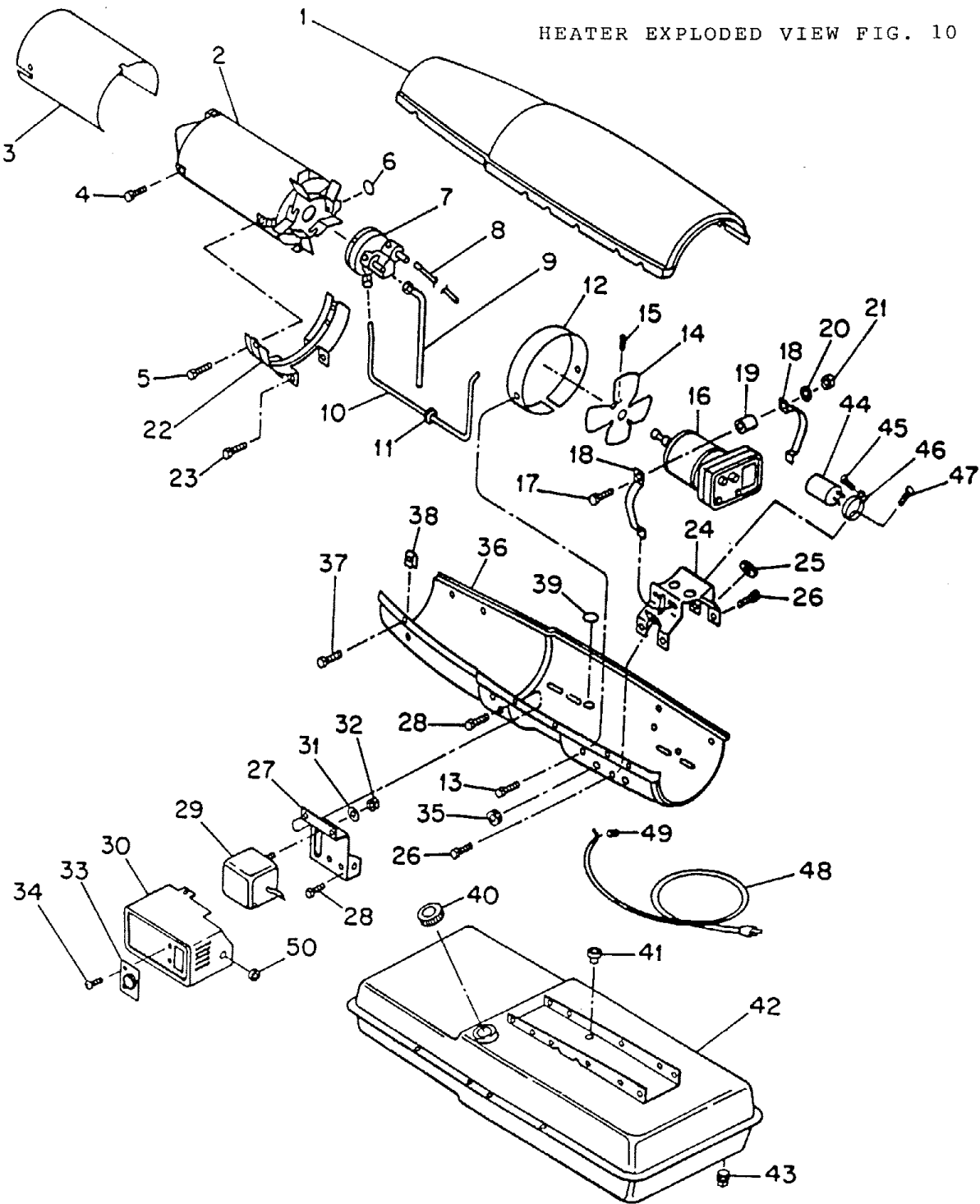


REDDY HEATER MARK 140 DELUXE LOW PRESSURE SPEC 2931G7 FORM 2339 (1/68)

HEATER EXPLODED VIEW FIG. 10

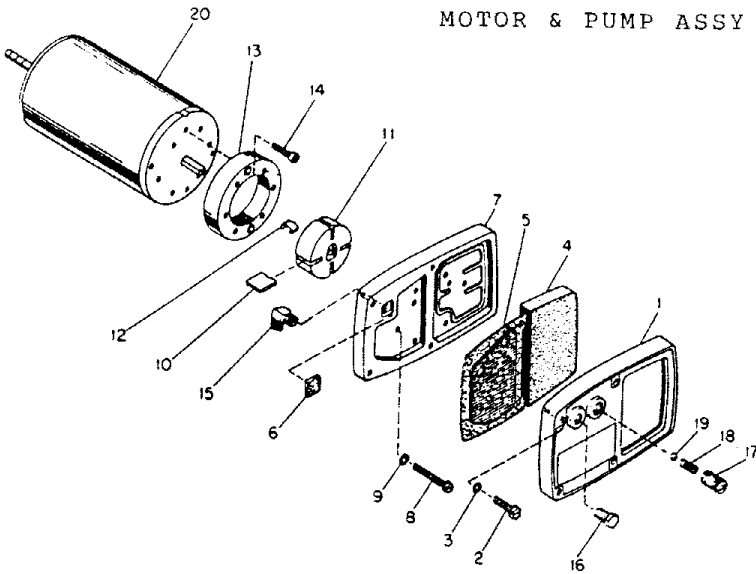


REDDY HEATER MARK 140 DELUXE LOW PRESSURE SPEC 2931G7 FORM 2339 (1/68)

Index No.	Part Number	HEATER EXPLODED VIEW FIG. 10 Part Name	Quan.
1	M13520G1	Shell, Upper	1
2	M16878G1	Combustion Chamber	1
3	M16679	Deflector, Heat	1
4	M11084-27	Screw, 10-12 x 1/2, Type A (Combustion Chamber to Lower Shell)	2
5	M11084-29	Screw, 10-12 x 3/4, Type A (Combustion Chamber to Lower Shell and Support Bracket)	4
6		(Not Used)	
7	*M12947G3	<u>Burner Assembly</u> (See Figure 13)	1
8	*M10816G12	Electrode Lead Assy (Alternate: Part No. M10816G21)	2
9	*M16667G1	Fuel Filter Assembly	1
10	*M16668	Air Line	1
11	M6087	Grommet	1
12	M12830	Housing, Fan	1
13	M11084-27	Screw, 10-12 x 1/2, Type A (Fan Housing to Lower Shell)	4
14	M13038	Fan, 9° Pitch	1
15	No Number	Setscrew, Soc. hd, cup pt., 1/4-28 (Fan to shaft)	2
16	M16674G1	<u>Motor Package Assembly</u> (See Figure 14)	1
17	HC4-10C	Screw, 1/4-20 x 1-1/4, Hex hd (Motor Clamps)	2
18	M10964-1	Clamp, Motor	4
19	M13620	Spacer, Motor clamp	2
20	WLM-4	Washer, Lock, 1/4 (Motor Clamps)	2
21	NPC-4C	Nut, Hex, 1/4-20 (Motor Clamps)	2
22	M12828	Bracket, Shell Support	1
23	M11034-27	Screw, 10-12 x 1/2, Type A (Shell Support Bracket to Fuel Tank Assembly and Lower Shell)	6
24	M12829	Bracket, Motor Support	1
25	1000577	Grommet	2
26	M11084-27	Screw, 10-12 x 1/2, Type A (Motor Support Bracket to Lower Shell and Fuel Tank Assy)	6

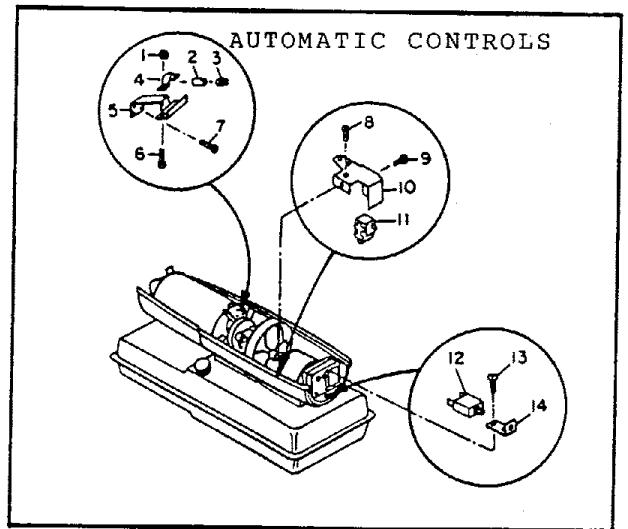
Index No.	Part Number	HEATER EXPLODED VIEW FIG. 10 Part Name	Quan.
27	M12841G1	Bracket, Transformer mounting	1
28	M11084-27	Screw, 10-12 x 1/2, Type A (Transformer Mounting Bracket to Lower Shell and Fuel Tank)	2
-	M12834G1	Transformer Assy	1
29	M3259-4	Transformer	1
30	M14985G1	Cover Assy, Transformer	1
31	WLM-4	Lockwasher, 1/4-in. (Trans- former to Mounting Bracket)	2
32	NPC-4C	Nut, Hex, 1/4-20 (Trans- former to Mounting Bracket)	2
33	M12611	Thermostat	1
34	FHF3-3C	Screw, Fil hd, No. 10-32 x 3/8	4
35	1000576	Grommet	1
36	M12826	Shell, Lower	1
37	M11084-27	Screw, 10-12 x 1/2, Type A (Upper Shell to Lower Shell)	6
38	M11271-6	Nut, Tinnerman (Upper Shell to Lower Shell)	6
39	1000576	Grommet (Photo Cell leads)	2
40	M3353	Cap, Fuel Tank	1
41	M14260	Bushing (Fuel Filter to Tank)	1
42	M12820G4	Fuel Tank Assy	1
43	M13990	Plug (Fuel Tank Drain)	1
ELECTRICAL PARTS			
-	M9900G51	Wire Assy, Black (To Capacitor)	1
44	M12650-1	Capacitor	1
45		(Not Used)	
46	M12651	Clamp, Capacitor	1
47	M11084-27	Screw, No. 10-12 x 1/2, Type A (Clamp to Motor Support)	1
48	M10813G28	Service (Extension) Cord Assy	1
-	M15823-26	Screw, Grounding, No. 10-12 x 3/8, Type B	1
49	M13942-4	Connector, Wire Nut	1
-	M17881-3	Connector, Wire Nut (5 wires)	1
50	M11143-1	Bushing, Strain Relief	1

REDDY HEATER MARK 140 DELUXE LOW PRESSURE SPEC 2931G7 FORM 2339 (1/68)



MOTOR & PUMP ASSY

Index No.	Part Number	MOTOR & PUMP ASSY Part Name	Quan.
-	M16674G1	<u>Motor Package Assembly</u> (See Figure 10)	
-	*M16675G1	<u>Pump and Filter Parts Package</u>	1
1	M16545	End Cover	1
2	M12461-31	Screw, Hex hd, 10-32 x 1 in.	4
3	WLI-3	Lockwasher, Internal No. 10	4
4	*M12179	Intake Filter	1
5	*M12244G1	Filter Assy	1
6	*M11637	Filter, Lint	1
7	M12233	End Cover, Pump (Port plate)	1
8	M12461-34	Screw, Hex hd, 10-32 x 1-1/2 in.	6
9	WLI-3	Lockwasher, Internal No. 10	6
10	M8643-3	Blade	4
11	M13635-3	Rotor (Alt: M17709)	1
12	M14856	Spring (Alt: M11966-5, used with M17709. Rotor; when used, also use Shim, M17484)	1
13	M8645-3	Pump Body	1
14	FHPF3-7C	Screw, Fil hd, 10-32 x 7/8 in.	2
15	M12865	Male Elbow	1
16	M10837	Pipe Plug	1
17	M10992-1	Screw, Pressure Adjustment	1
18	M10993-1	Spring, Compression	1
19	M8940	Ball, 1/4 in. dia.	1
20	M12811	Motor	1
-	M8608	End Shield, Motor (Pump-end)	1
-	M17327	End Shield, Front (Fan-end)	1

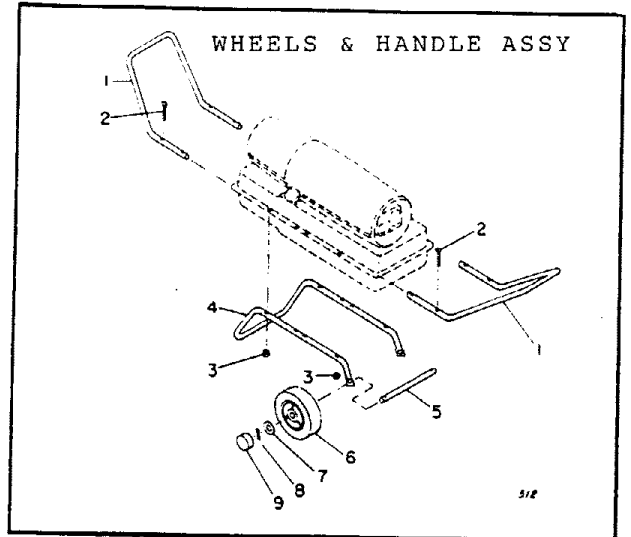
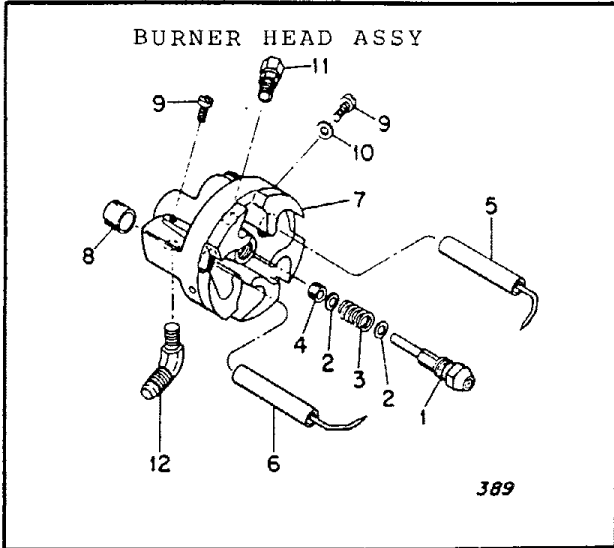


AUTOMATIC CONTROLS

Index No.	Part Number	AUTOMATIC CONTROLS Part Name	Quan.
1	NTC-1C	Locknut	2
2	M13962	Tubing, Photocell	1
3	M14456G1	Photocell and Bushing Assy	1
4	M13963	Clamp, Tubing	1
5	M13961	Bracket, Photocell	1
6	M12461-2	Screw, Hex hd, 6-32 x 3/8	2
7	M10908-1	Screw, Hex hd, No. 6-32 x 1/4, Type "S"	2
8	ST2-2AC	Screw, Rd hd, No. 8 x 1/4	1
9	M12461-2	Screw, No. 6-32 x 3/8	1
-	M14892G5	Relay and Bracket Assy	1
10	M14800	Bracket, Relay	1
11	M14378G4	Relay Assy	1
12	M14360	Circuit Breaker	1
13	M10908-14	Screw, No. 8-32 x 3/8, Type "S"	1
14	M14802	Bracket, Circuit Breaker	1
	M9900G38	Wire Assy, Red, to circuit breaker	1
	M9900G53	Wire Assy, Black, to circuit breaker	1
	M16615G1	Wire Harness Assy, to photocell	1
	M13942-2	Wire Connector (Wire Nut)	3
	M11271-6	Nut, Tinnerman (Relay Bracket to Lower Shell)	1
	M11084-27	Screw, 10-12 x 1/2, Type A (Relay Bracket to Lower Shell)	1

REDDY HEATER LOW PRESSURE

MARK 140 DELUXE SPEC 2931G7 FORM 2339 (1/68)



Index No.	Part Number	BURNER HEAD ASSY Part Name	Quan.
-	M12947G3	Burner Assembly (See Figure 10)	Ref
1	M16137	Nozzle, Siphon (Alt: M16893)	1
2	M10659-1	Washer, Nozzle seal	2
3	M10809-1	Spring, Nozzle seal	1
4	M8882	Sleeve	1
5	M12951	Electrode, L. H.	1
6	M12952	Electrode, R. H.	1
7	M12948G1	Burner Head Assy (Includes roll pins, bushings and burner head casting)	1
8	M16712	Bushing, Electrode (Alt: M9788)	2
9	HF3-3C	Screw, Hexhd, 10-32 x 3/8 in.	3
10	WP-3C	Washer, Flat, No. 10	1
11	M12949	Connector, Male	1
12	M14256	Elbow, Male, 90°	1

Index No.	Part Number	WHEELS & HANDLE ASSY Part Name	Quan.
1	M15813-2	Handle, Front and Rear	2
2	M12345-34	Screw, Oval hd. 10-24 x 2 (Handle attaching)	8
3	NTC-3C	Nut, Hex, 10-24	8
4	M12831-2	Frame, Wheel Support	1
5	M12867	Axle	1
6	M14830	Wheel	2
7	WP-8C	Washer, 1/2 in.	2
8	C4-7	Cotter Pin, 1/8 x 7/3 in.	2
9	M14831	Hub Cap (Red)	2

WIRING DIAGRAM

