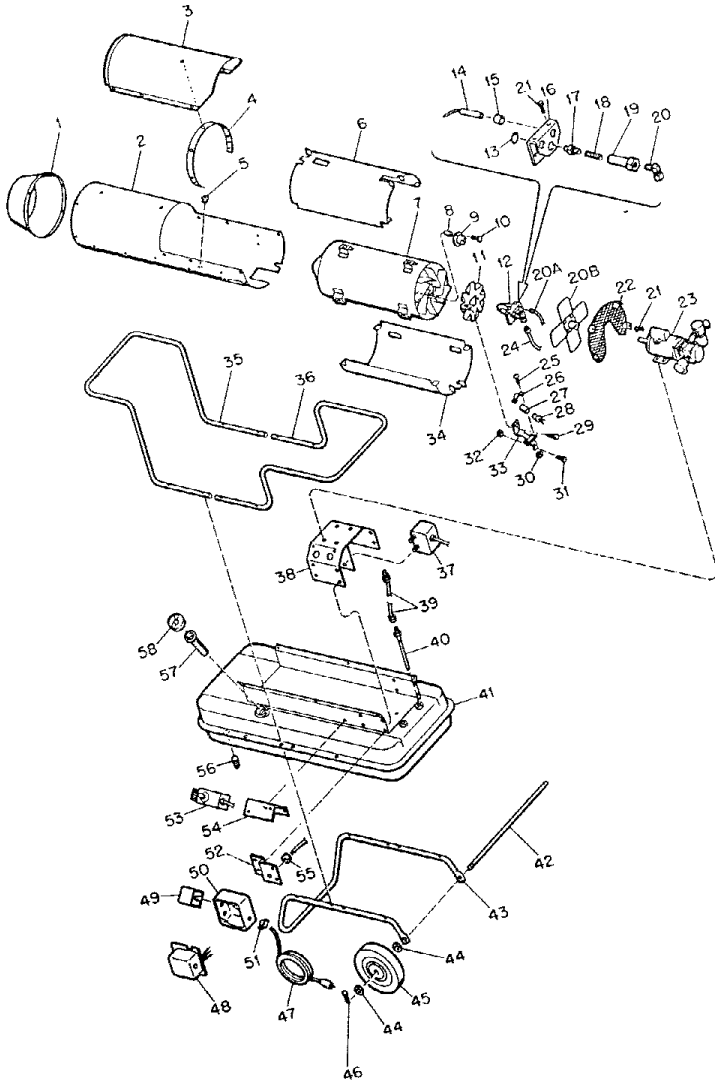


# Master B300D Spec# 3206G01

# Form# 2973-01



39	M3334-10	Fuel Line Assembly	2
40	M18919-1	Fuel Intake Tube	2
41	M18298-2BA	Fuel Tank Assembly	1
42	M18774	Axle	1
43	M18519A	Frame, Wheel Support	1
44	WP-10C	Washer, Flat, 5/8 in.	4
45	M8111	Wheel	2
46	C5-10C	Pin, Cotter, 5/32 x 1-1/4 in.	2
47	M10813-58	Extension Cord	1
48	M27570	Relay, Safety Control	1
	M3558	Connector, Wire	4
	M5187	Connector, Wire	3
49	M21686	Relay	1
50	M3011	Box switch	1

1	M18089AZ	Nose cone	1
	M11084-27	Screw, No. 10-12 x 1/2 (Nose Cone to Outer Shell)	6
2	M18085AZ	Outer Shell	1
	M11084-27	Screw, No. 10-12 x 1/2 (Outer Shell to Tank)	6
3	M18087AZ	Cover, Outer Shell	1
	M11084-27	Screw, No. 10-12 x 1/2 (Cover to Outer Shell)	6
	M11271-6	Nut, Tinnerman (Cover to Outer Shell)	6
4	M22905A	Support, Cover	1
	M12461-26	Screw, No. 10-32 x 3/8 in. (Support to Outer Shell)	5
5	1000576	Grommet	4
6	M18915	Deflector, Heat	1
	M12461-26	Screw, No. 10-32 x 3/8 in. (Outer Shell to Combustion Chamber)	6
7	M18773-3	Combustion Chamber	1
8	M18867	Spacer	2
9	M5895	Switch, Thermal	1
10	ST2-8AC	Screw, No. 8-15 x 1 (Thermal Switch attaching)	2
11	M23537	Plate, Deflector	1
12	M18777-2	Nozzle and Electrode Adaptor Assembly	1
13	M16741-18	. Retaining Ring, Nozzle	1
14	M3981	. Electrode	2
15	M16712	. Bushing, Electrode	2
	M12461-14	. Screw, 8-32 x 3/8 (Electrode Clamping)	2
16	M18775	. Bracket, Nozzle	1
17	M22626	. Nozzle	1
18	M4274	. Spring	1
19	M18776	. Adapter	1
20	69248	. Elbow	1
	M11084-27	Screw No. 10-12 x 1/2 (Adapter Mounting)	2
20A	M10816-33	Electrode Lead	2
20B	M27555	Fan	1
21	M21964	Key, Fan Locating	1
22	M23386-1AZ	Guard, Fan	1
23	M23373-2	Motor and Pump Assembly (See Figure 4 for details)	1
	HC4-4C	Screw, 1/4-18 x 2 (Motor Mounting)	4
	NTC-4C	Nut, Torque Lock 1/4-18	4
	WP-4C	Washer, Plain 1/4	4
24	M18877	Fuel Line, Pump to Nozzle	1
25	M12461-2	Screw, 6-32 x 3/8 in.	2
26	M13963A	Clamp, Tube	1
27	M13962A	Tube, Photo cell	1
28	M25912-1	Photo cell	1
29	M10908-1	Screw, 6-32 x 1/4 in.	2
30	NPC-1C	Nut, Plain No. 6-32	2
31	M12461-24	Screw, 8-32 x 3/8 in.	1
32	NTC-2C	Nut, Torque Lock No. 8-32	1
33	M13961A	Bracket, Photo Cell	1
34	M21329	Heat Deflector, Bottom	1
35	M19516A	Handle, Front	1
36	M19515A	Handle, Rear	1
	M12345-49	Screw, No. 10-24 x 2-1/4 (Handle to Fuel Tank)	8
37	M3259-4	Transformer	1
	WLM-4C	Washer, Lock 1/4 in.	2
	NPC-4C	Nut, Hex, 1/4-20	2
38	M18764-1BA	Motor Bracket Assembly	1
	M11084-27	Screw, 10-12 x 1/2 in. (Motor Bracket Attaching)	6

