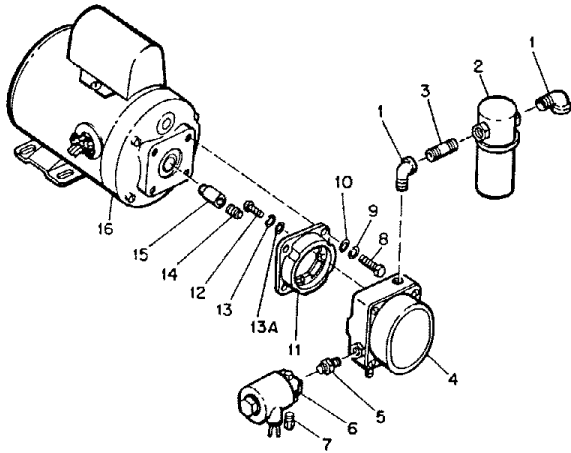


Master B 320C

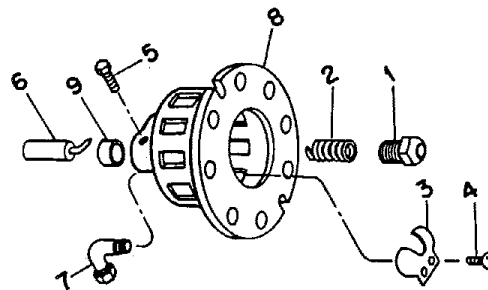
Spec# 3123G01

Form# 2333-2
7.72



30	RC1-3C	Screw	1
31	NTC-2C	Nut	1
32	M13962A	Tubing, Photo Cell	1
33	M23802-2	Photo Cell	1
34	M21865-1A	Bracket Assy, Photo Cell	1
35	M10908-1	Screw	2
36	M5895	Switch, Fan	1
37	M18867	Spacer	2
	ST2-6AC	Screw	2
38	M6293	Deflector, Air	1
-	M11084-26	Screw	2
39	M3259-3	Transformer	1
-	NPC-4C	Nut	2
-	WLM-4C	Lockwasher	2
40	M15141-2	Conduit, Transformer to junction box	1
	M15454	Insulator	1
	M15140	Connector, Straight	1
41	M25297-6	Thermostat Assy	1
-	WLI-1	Lockwasher	2
-	M10908-2	Screw	2
42	M15141-14	Conduit, Junction box to	
43	M10813-42	Cord, Extension	1
44	M15140	Connector, Straight	1
45	M20302	Relay	1
46	M22012	Control, Safety	1
	M12461-27	Screw	2
	M15714-3	Connector, Wire	1
	M15714-1	Connector, Wire	1
	NTF-3	Nut	8
	M12461-27	Screw	2
47	M3011	Box, Switch	1
48	M4825	Motor Support	1
	NTC-4C	Nut	6
	HC4-4C	Screw	6
49	M10923-1	Intake Tube Assy	2
50	M3334-7	Fuel Line Assy	2
51	M18393-2A	Fuel Tank	1
52	M23284	Filler Cap	1
53	M18053	Screen, Filler Neck	1
54	M8257	Drain Plug, 1/2-14 sq. hd.	1
55	C5-10C	Cotter Pin	2
56	WP-10C	Washer	4
57	M8111	Wheel	2
58	M8482A	Axle Assy	1
	HC4-20C	Screw	8
	NTC-4C	Nut	8
	WP-4C	Washer	4
	M4119	Label, C. S. A.	1
	57305	Rivet	2

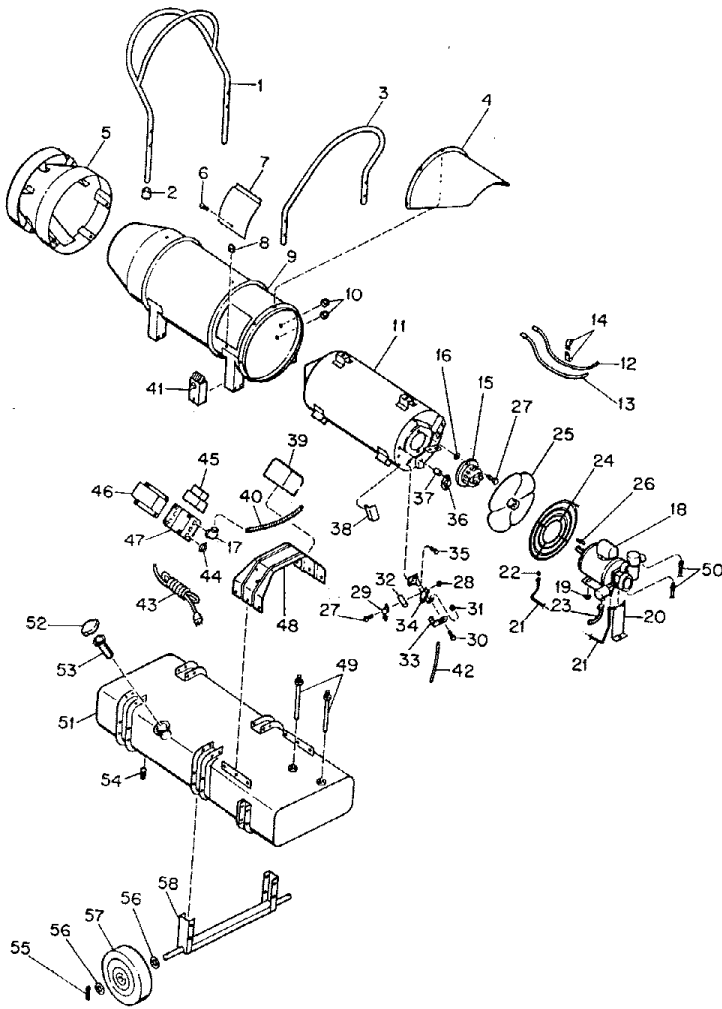
5-	M23365-3	Motor and Pump Assy	N/A
1	57413	Elbow, Street 1/4 in.	2
2	M3973	Filter, Fuel	1
	M4307	. Filter Can	1
	M3301-2	. Filter Gasket	1
	M3301	. Filter Element	1
3	M17499-1	Nipple	1
4	M22872-2	Pump, Fuel	1
5	69246	Nipple, Pipe 1/8 in.	1
6	M3974-1	Valve, Solenoid	1
7	1000513	Connector, Male	1
8	*HC5-7C	Screw, Hex hd,	
9	*WLM-5C	Lockwasher, 5/16 in.	4
10	*WP-5C	Washer, Plain, 5/16 in.	4
11	M22348	Adaptor	1
12	*RF3-6	Screw, Rd. hd., No. 10-32 x 3/4 in.	3
13	*WLM-3	Lockwasher No. 10	3
13A	WP-3C	Washer, Plain	3
14	M18436	Spring	1
15	M22873	Coupling	1
16	M18894-5	Motor	1



4-	M9107G7	Burner Head Assembly (See Fig. 3)	Ref
1	M6296	. Nozzle	1
2	M4274	. Spring	1
3	M3978	. Air Deflector	1
4	RC1-2C	. Screw, Rd. Hd., No. 6-32 x 1/4 in.	2
5	HF3-3C	. Screw, Hex. Hd., No. 10-32 x 3/8 in.	2
6	M3981	. Electrode	2
7	M2294	. Elbow	1
8	M10947-3	. Body, Burner	1
9	M16712	. Bushing, Electrode	2

MASTER B 320c

Spec # 3123G01



1	M6890-1A	Front Handle	1
2	M4855	Rubber Foot	2
3	M5089A	Rear Handle	1
	HC4-10C	Screw	8
	NTC-4C	Nut	8
4	M5277A	Cowl Assy	1
	M11084-27	Screw	5
	NTC-2C	Nut	2
	WLI-2C	Lockwasher	2
	M12461-15	Screw	2
	M12461-27	Screw	10
	STP3-4	Screw	5
	WP-3C	Washer	4
5	M6876-1A	Heat Diffuser Assy	1
6	HC3-4C	Screw, Hex hd cap, 10-24 x 1/2	1
7	M4812-3A	Door, Access	1
8	NSC-3S	Speed Nut	1
9	M12971-1A	Outer Shell Assy	1
10	1000576	Grommet, 1/2 in.	2
11	M12957-2	Combustion Chamber Assy	1
12	M14941-3	Electrode Lead Tubing	2
13	M10816-32	Electrode Lead Assy	2
14	M3570	Clip, Nylon	2
	M15823-39	Screw	1
	WLI-2C	Lockwasher	1
15	M9107-7	Burner Head Assy (See Fig. 4)	1
	M12461-16	Screw	2
	WP-2C	Washer	2
16	M13222	Washer, Burner Spacing	AR
17	M56022	Connector, 90°	1
	M15454	Insulator	1
18	M23365-3	Motor and Pump Assy (See Figure 5)	NA
	*NTC-5C	Nut	4
	*WP-5C	Washer	4
	*HC5-8C	Screw	4
19	*WP-5C	Washer, Motor Space	AR
20	M6685B	Pump Support Bracket	1
	HF3-4C	Screw	1
	NPF-3C	Nut	1
	WLM-3C	Lockwasher	1
21	M4849	Fuel Line, Pump to Burner	1
22	M3530	Grommet	1
23	M15141-15	Conduit, Solenoid valve to junction box	1
	M15454	Insulator	2
	56022	Connector, 90°	1
	M15140	Connector, Straight	1
24	M4977	Fan Guard Assy	1
	M11084-39	Screw	2
25	M6303	Fan	1
26	M18916	Key, Fan Locating	1
27	M12461-2	Screw	2
28	NTC-1C	Nut	2
29	M13963A	Clamp	1

