

DART PORTABLE HEATER MODELS DB-99 and DB-99D

Spec. No. 2965G30 & 3058G14
Form No. 2691 (10/70)

Spec. No. 2965G31 & 3058G15

PARTS LIST

Fig.& Index No.	Part No.	Part Name	DB-99	DB-99D
13-1	M13134G3J +	Shell Assy, Upper	1	1
2	M16781G3	Chamber, Combustion	1	1
	M11084-27*	Screw (Combustion Chamber attaching front)	2	2
	M11084-29*	Screw (Combustion Chamber attaching rear)	2	2
3	M15995	Plug, Button (Combustion Chamber rear head)	1	-
4	M16660	Bracket, Photocell	-	1
	M10908-1*	Screw (Photocell Bracket to Combustion Chamber rear head)	-	2
5	M16656G1	Cell and Bushing Assy	-	1
6	Ref	Burner Head Assembly (See figure 14)	1	1
	M11084-27*	Screw (Burner Head to Combustion chamber)	3	3
7	M16879	Air Line	1	1
8	M15807	Strap, Retainer	1	1
	M11084-27*	Screw (Retainer Strap to Lower Shell)	2	2
9	M14529	Fan, 16" pitch	1	1
10	SF4-2-1/2K	Setscrew, Soc.Hd, cup pt. 1/4-20.(Fan to Motor Shaft)	2	2
11	Ref	Motor Package Assembly (See figure 15)	1	1
12	M16661	Clamp, Motor	4	4
13	HC4-10C*	Screw (Motor Clamps)	2	2
14	WLM-4*	Lockwasher 1/4 in. (Motor Clamps)	2	2
15	NPC-4C*	Nut, Hex, 1/4-20 (Motor Clamps)	2	2
16	M16777J +	Shell, Lower	1	1
17	M11084-27*	Screw (Upper Shell to Lower Shell)	6	6
18	M11271-6*	Nut, tinnerman (Upper Shell to Lower Shell)	6	6
19	M12330A	Bracket, Shell Support	1	1
	M11084-27*	Screw (Support Bracket to Lower Shell and Fuel Tank)	4	4
	M11084-29*	Screw (Lower Shell to Support Bracket)	2	2
20	1000576	Grommet (Ignition cable thru Lower Shell)	2	-
21	M15809	Plug, Button (17/32 in. dia. hole)	1	-
22	M16646	Bracket, Motor Support	1	1
	M11084-27*	Screw (Motor Support Bracket to Lower Shell and Fuel tank)	6	6
23	1000576	Grommet. (Motor Leads thru Motor Support Bracket)	1	1

Fig.& Index No.	Part No.	Part Name	DB-99	DB-99D
13-24	M16697	Transformer, 5000 Volt	1	1
	M11084-27	Screw (Transformer to Motor Support Bracket)	2	2
25	M11954	Bushing, Strain Relief (Service Cord to Lower Shell)	1	1
26	M10813G33	Cord Assembly, Extension	1	-
26	M10813G34	Cord Assembly, Extension	-	1
27	M18360G2H	Tank Assembly, Fuel	1	1
28	M18051	Cap, Fuel Tank	1	1
29	M18053	Screen, Filler neck	1	1
30	M10990-3	Bushing, Rubber (Fuel Filter into Fuel Tank)	1	1
31	M21040	Plug, Pipe, Hex Hd. 1/4-18	1	1
32	M11952	Bracket, Starting Relay Mounting	1	-
33	M12462-5	Relay, Starting	1	-
	RC2-2C*	Screw (Starting Relay to Mounting Bracket)	2	-
	WLI-2	Lockwasher, Internal No. 8	2	-
	ST2-2AC	Screw (Grounding)	1	1
	M11084-27	Screw (Relay Bracket to Shell)	1	1
	M16852G3	Relay Bracket Assembly	-	1
34	M12462-5	Relay	-	1
35	RC2-2C*	Screw (Relay to Relay Bracket)	-	2
36	M14378G2	Relay Assembly	-	1
37	M12461-2*	Screw (Relay to Relay Bracket)	-	1
38	M14360	Breaker, Circuit	-	1
39	M16851G1	Bracket Assembly, Control	-	1
	M9900G62	Wire Assembly, Black (To Starting Relay)	1	-
	M9900G2	Wire Assembly, Black (To Starting Relay)	-	1
	M9900G80	Wire Assembly (To Breaker)	-	1
	M16615G1	Harness Assembly	-	1
	M13942-2	Connector (Cell and Bushing and Relay to Circuit Breaker)	-	3
	M13942-4	Connector (Relay Leads)	2	2

* Standard hardware. See Standard Screw List.

+ Specify Color when ordering painted parts.

DART PORTABLE HEATER MODELS DB-99 and DB-99D

Spec. No. 2965G30 & 3058G14
Form No. 2691 (10/70)

Spec. No. 2965G31 & 3058G15
MOTOR PACKAGE ASSEMBLY

Fig. & Index No.	Part No.	Part Name	Qty.
15-	M18146G1	Motor Package Assembly	1
1	M16545	End Cover, Filter	1
2	M12461-31*	Screw (Filter End Cover to Pump End cover)	4
3	WLI-3	Lockwasher, Internal No.10	4
4	M12179	Intake Air Filter	1
5	M12244G1	Output Filter Assy.	1
6	M11637	Filter, Lint	1
7	M12233	Front Cover, Pump (Port Plate)	1
8	M12461-32*	Screw (End Cover to Motor)	6
9	WLI-3	Lockwasher, Internal No. 10	6

Fig. & Index No.	Part No.	Part Name	Qty.
10	M8643	Blade	4
11	M11959	Rotor	1
12	M11966-5	Spring	1
13	M8645	Pump Body	1
14	FHPF3-4C	Screw (Pump Body to Motor)	2
15	M5976	Connector, Male	1
16	M10837	Plug, Pipe	1
17	M10992-1	Screw, Pressure Adjustment	1
18	M10993-1	Spring, Compression (Pressure Relief)	1
19	M8940	Bail 1/4 in. dia.	1
20	M17941	Motor	1

* Standard hardware. Purchase locally.

STANDARD SCREWS

Part No.	Part Name
FHPF3-4C	Screw, Fillister hd, No. 10-32 x 1/2 in.
FHPF3-7C	Screw, Fillister hd, No. 10-32 x 7/8 in.
HC4-10C	Screw, Hex hd, machine, 1/4-20 x 1-1/4 in.
RC2-2C	Screw, Rd hd, No. 8-32 x 1/4 in.
ST2-2AC	Screw, Self-tapping, Rd hd, No. 8-15 x 1/4 in.
M11084-27	Screw, Self-tapping, hex hd, No. 10-12 x 1/2 in., Type "A"
M11084-29	Screw, Self-tapping, hex hd, No. 10-12 x 3/4 in., Type "A"
M12345-31	Screw, Oval hd machine, No. 10-24 x 1-1/4 in.
M12345-34	Screw, Oval hd machine, No. 10-24 x 2 in.
M12461-31	Screw, Hex hd, No. 10-32 x 1 in.
M12461-32	Screw, Hex hd, No. 10-32 x 1-1/8 in.
M12461-34	Screw, Hex hd, No. 10-32 x 1-1/2 in.
M15823-26	Screw, Self-tapping, hex hd, No. 10-12 x 3/8 in., Type "B"
M12461-2	Screw, Hex hd, No. 6-32 x 3/8 in.
M10908-1	Screw, Self-tapping, hex hd, 6-32 x 1/4 in., Type "S"

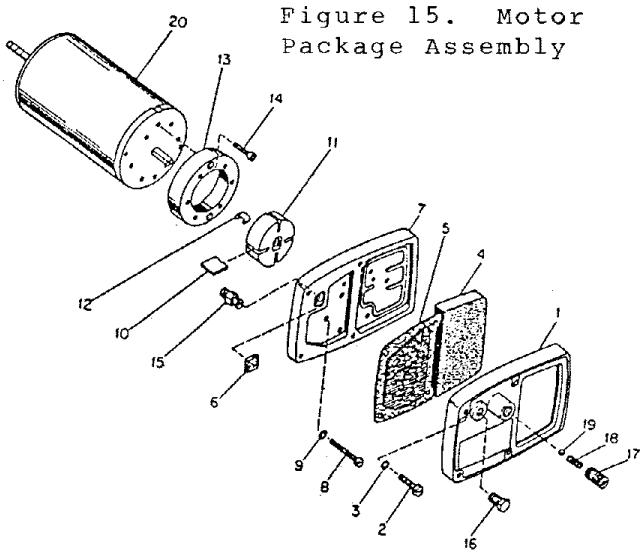


Figure 15. Motor Package Assembly

WHEELS AND HANDLES

Fig. & Index No.	Part No.	Part Name	DB-99	DB-99D
16-1	M15808A	Handle, Front	1	-
	M15808-2	Handle, Front	-	1
2	M15131A	Handle, Rear	1	-
	M15131-2	Handle, Rear	-	1
3	M12342B	Wheel Support Frame	1	-
	M12342-2	Wheel Support Frame	-	1
4	*M12345-31	Screw	2	2
5	*WP-3C	Washer	2	2
6	*M12345-34	Screw (Handles and wheel support frame to fuel tank)	8	8
7	*NTC-3C	Nut, Hex 10-24 Torque Lock	10	10
8	M16801	Axle	1	1
9	M19294	Wheel	2	2
10	WPC-8C	Washer, Flat	2	2
11	M16741-15	Ring, Retaining	2	2
12	M1680Z	Hub Cap (Black)	2	2

* Standard hardware. Purchase locally.

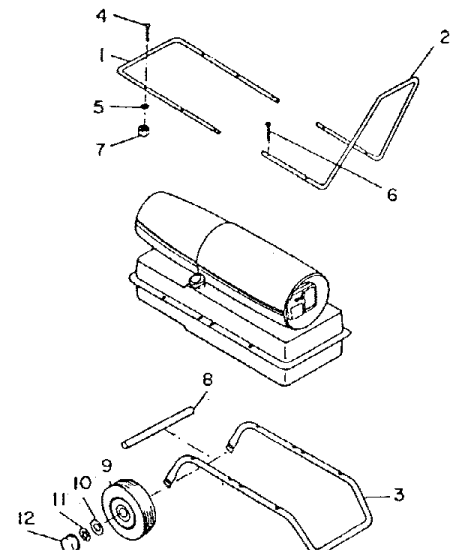


Figure 16. Wheels & Handles

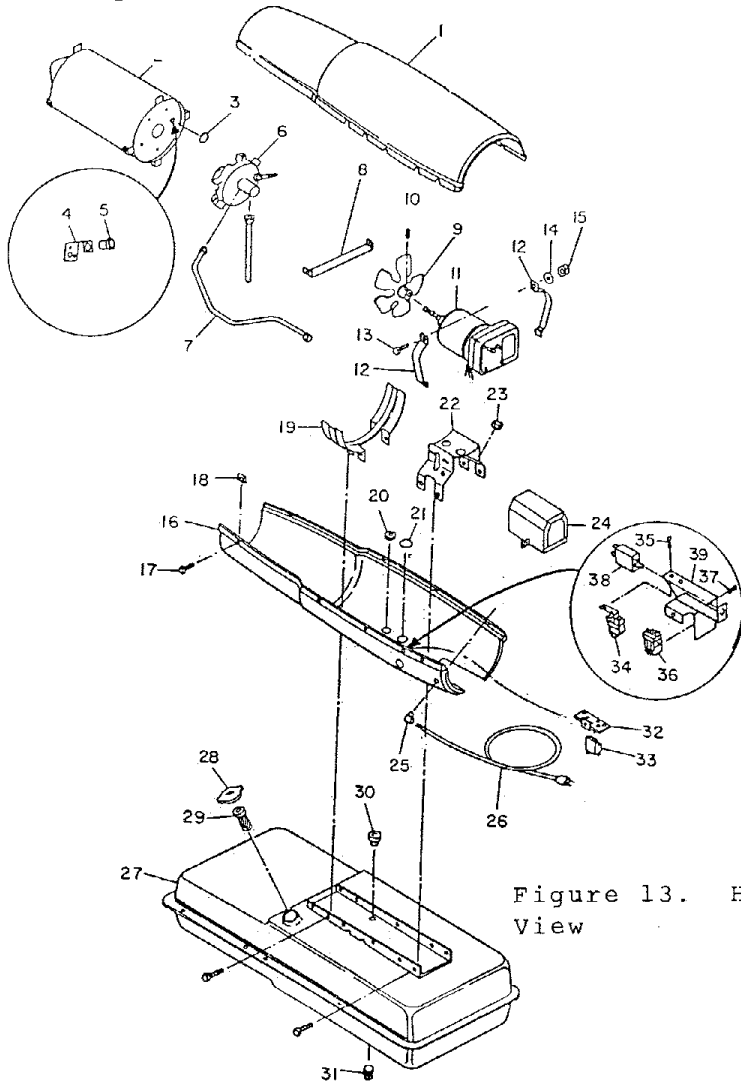


Figure 13. Heater Exploded View

Fig. & Index No.	Part Number	Part Name	Qty.
14-	M16786G3	Burner Head Assembly	1
1	+M16790-2	. Filter Tube	1
2	+M19630	. Filter, Fuel	1
3	M13849	. Nut, Flared	1
4	M16741-18	. Ring, Retaining	1
	M16787G4	. Nozzle Adaptor Assy	1
5	M16791	. Connector, Male	1
6	M5976	. Connector, Male	1
7	M8882	. Sleeve, Nozzle Seal	1
8	M10659-1	. Washer, Nozzle Seal	2
9	M10809-1	. Spring, Nozzle Seal	1
10	M18048	. Nozzle, Aspirating 0.61 GPH	1
11	M16535	. Adaptor, Nozzle	1
12	M16895G1	. Spark Plug Assy	1
13	M16534	. Body, Burner Head	1

+Indicates parts which replace fuel filter assembly, Part No. M16789G3. Filter tube Part No. M16790-2 must not be used without fuel filter, Part No. M19630 in place.

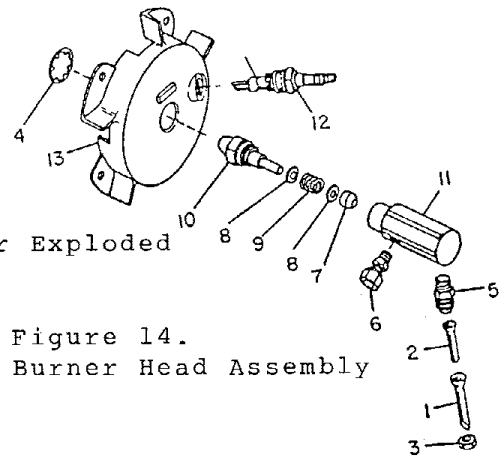


Figure 14. Burner Head Assembly

Figure 9. Standard Wiring Diagram

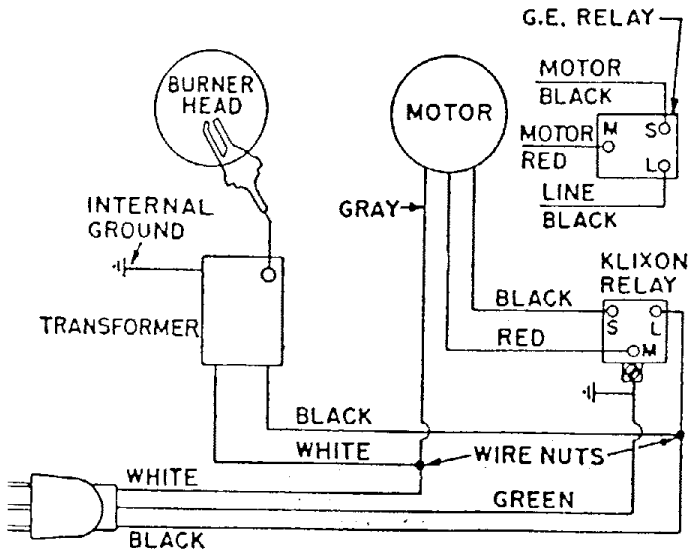


Figure 9. Deluxe Wiring Diagram

