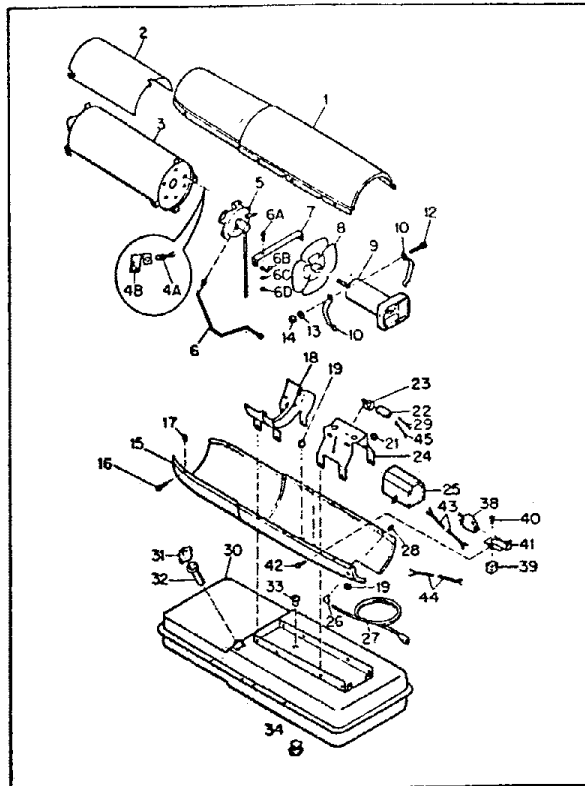


DART PORTABLE HEATER MODEL DB150D Spec. No. 3199G16  
 Manual No. M50092-29

Index No.	Part Number	Part Name or Description	Ref. Notes	Qty
1	M17015-1H	Shell Assembly, Upper	@	1
2	M16679	Deflector, Heat		1
3	M16887-6	Combustion Chamber		1
	M11084-27	Screw (Combustion Chamber attaching, front)	*S	2
	M11084-29	Screw (Combustion Chamber attaching, rear)	*S	2
4A	M16656-3	Cell and Bushing Assy.		1
4B	M16660	Bracket, Photo Cell		1
	M10908-1	Screw		2
5	M16803-4	Burner Head Assy.	@	1
	M11084-27	Screw (Burner Head to Combustion Chamber)	*S	3
6	M16804	Air Line	@	1
6A	M12461-27	Screw (Air line retaining)		1
6B	M24717	Clamp (Air line)		1
6C	WLM-3	Lockwasher No. 10		1
6D	NPF-3C	Nut, Plain No. 10-32		1
7	M16871	Strap, Retainer		1
	M11084-27	Screw (Retainer Strap to Lower Shell)	*S	2
8	M17058	Fan, 16° Pitch		1
	SF4-2-1/2K	Setscrew, Soc. Hd., cup pt., 1/4-28 (Fan to Motor Shaft)		2
9	M17875-9	Motor Package Assy.	@	1
10	M16661	Clamp, Motor		4
11	Not Used			
12	HC4-10C	Screw (Motor Clamps)	*S	2
13	WLM-4	Lockwasher, 1/4 in. (Motor Clamps)	\$	2
14	NPC-4C	Nut, Hex., 1/4-20 (Motor Clamps)		2
15	M16810H	Shell, Lower	%	1
16	M11084-27	Screw (Upper Shell to Lower Shell)	*S	8
17	M11271-6	Nut, Tinnerman (Upper Shell to Lower Shell)	\$	8
18	M12828	Bracket, Shell Support		1
	M11084-29	Screw (Support Bracket to Lower Shell and Fuel Tank)	*S	4
	M11084-29	Screw (Lower Shell to Support Bracket)	*S	2
19	1000576	Grommet (Cables and Leads thru Lower Shell)		4
21	1000577	Grommet (Leads to motor and Capacitor)		2
22	M12650-1	Capacitor		1
23	M12651-1	Clamp, Tinnerman (Capacitor Mounting)		1
	M11084-27	Screw (Capacitor Clamp to Motor Support Bracket)	*S	1
24	M16645	Bracket, Motor Support		1
	M11084-27	Screw (Motor Support Bracket to Lower Shell and Fuel Tank)	*S	4
	M15823-26	Screw (Service Cord grounding to Motor Support Bracket)	*S	1



HEATER GENERAL ASSEMBLY, EXPLODED VIEW

25	M16697-02	Transformer, 5000 Volt	@	1
	M11084-27	Screw (Transformer to Motor Support Bracket)	*S	2
26	M11954	Bushing, Strain Relief (Service Cord to Lower Shell)		1
27	M10813-77	Service (Extension) Cord		1
28	M13942-5	Connector (Wire Nut)	\$	2
	M13942-7	Connector (Wire Nut)	\$	3
29	M9900-77	Wire Assy. (To Capacitor)		1
30	M27547-01H	Fuel Tank		1
31	M23284	Cap. Fuel Tank		1
32	M18053	Screen, Filler Neck		1
33	M10990-3	Bushing, Rubber (Fuel Filter into Fuel Tank)		1
34	M27417	Plug, Drain		1
38	M28898-03	Safety Control Sensor and Circuit Breaker		1
39	M12462-6	Relay, Starting		1
40	RC2-2C	Screw (Relay to Relay Bracket)	*	2
41	M25296-1	Bracket, Safety Control		1
42	M11084-27	Screw		1
43	M16615G1	Wiring Harness Assy.		1
44	M9900-80	Wire Assy., Safety Control		1
45	M9900-62	Wire Assy.	\$	1
	SI2-2AC	Screw (Grounding)		1

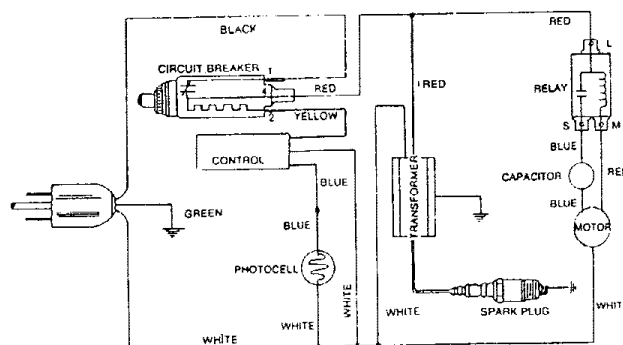


Figure 5. Wiring Diagram

DART PORTABLE HEATER MODEL DB150D Spec. No. 3199G16  
Manual No. 50092-29

Index Part No.	Part Number	or Description	Qty.
	M17875-9	Motor Package Assembly	
1	M16545	End Cover, Filter	1
2	M12461-31	Screw (Filter End Cover to Pump Cover)	4
3	WL1-3	Lockwasher, Internal No. 10	4
4	M12179	Intake Air Filter	1
5	M12244-1	Output Filter Assy.	1
6	M11637	Filter, Lint	1
7	M12233	End Cover, Pump (Port Plate)	1
8	M12461-34	Screw (End Cover to Motor)	6
9	WL1-3	Lockwasher, Internal, No. 10	6
10	M8643-3	Blade	4
11	M22456-3	Rotor	1
12	M22009	Insert	1
13	M8645-3	Pump Body	1
14	FHFP3-7C	Screw (Pump Body to Motor)	2
15	M5976	Connector, Male	1
16	M22997	Plug	1
17	M27694	Screw, Pressure Adjustment	1
18	M10993-1	Spring, Compression (Pressure Relief)	1
19	M8940	Ball, 1/4 in. dia.	1
20	M17814-6	Motor	1
	M16675-2	Kit, Pump and Filter	1

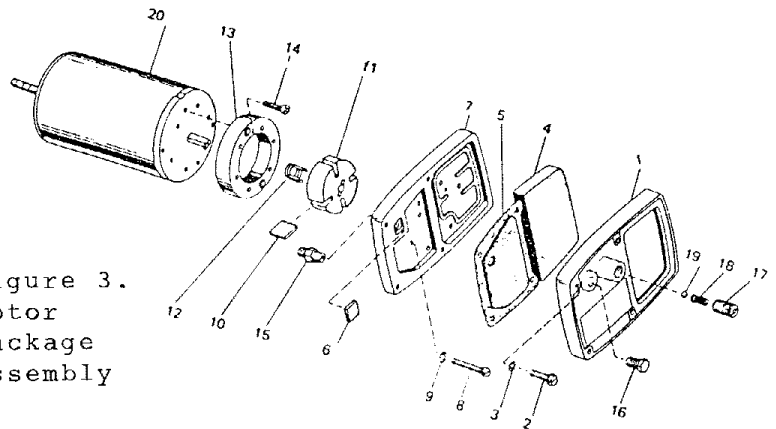


Figure 3.  
Motor  
Package  
Assembly

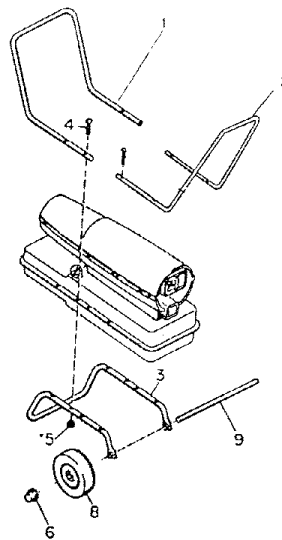


Figure 4.  
Handles and  
Wheels

**BURNER HEAD ASSEMBLY**

Index Part No.	Part Number	Part Name or Description	Ref. Notes	Qty.
	M16803-4	Burner Head Assembly	(a)	1
1	M16790-12	Filter Tube	(a)	1
2	M19630	Filter, Fuel	(a)	1
3	M13849	Nut, Flare		1
4	M16741-18	Ring, Retaining		1
	M16787-3	Nozzle Adapter Assy.		1
5	M16791	Connector, Male		1
6	M5976	Connector, Male		1
7	M8882	Sleeve, Nozzle Seal		1
8	M10659-1	Washer, Nozzle Seal		2
9	M10809-1	Spring, Nozzle Seal		1
10	M18022	Nozzle, Aspirating.		1
		1.0 gph		1
11	M16535	Adapter, Nozzle		1
12	M10962-2	Spark Plug		1
13	M123090	Body, Burner		1

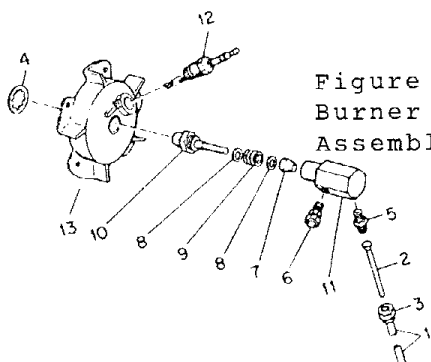


Figure 2.  
Burner Head  
Assembly

**DECALS, HANDLES AND WHEELS**

Index Part No.	Part Number	Part Name or Description	Qty.
1	M15813-3	Handle, Front	1
2	M15813-3	Handle, Rear	1
3	M12831-3	Frame, Wheel Support	1
4	M12345-33	Screw	8
5	NTC-3C	Nut, Torque Lock No. 10-24	8
6	M28526	Nut, Cap	2
8	M19294	Wheel	2
9	M16801-2A	Axle	1

**STANDARD SCREWS**

Part Number	Part Name or Description
FHFP3-7C	Screw, Fillister hd., No. 10-32 x 7/8 in.
HC4-10C	Screw, Hex hd., machine, 1/4-20 x 1-1/4 in.
M11084-27	Screw, Self-tapping hex hd., No. 10-12-1/2 in. Type "A"
M11084-29	Screw, Self-tapping, hex hd., No. 10 12 x 3/4 in., Type "A"
M12345-31	Screw, Oval hd., machine, No. 10-24 x 1-1/4 in.
M12345-34	Screw, Oval hd., machine, No. 10-24 x 2 in.
M12461-31	Screw, Hex hd., No. 10-32 x 1 in.
M12461-34	Screw, Hex hd., No. 10-32 x 1-1/2 in.
M15823-26	Screw, Self-tapping, hex hd., No. 10-12 x 3/8 in., Type "B"