

Figure 3. General Assembly, Exploded View

Index No.	Part Number	Description	Qty
4-	M23365-2	Motor and Pump Assy	NA
1	S7413	Elbow, Street 1/4 in.	2
2	M3973	Filter, Fuel	1
	M4307	Filter Can	1
	M3301-2	Filter Gasket	1
	M3301	Filter Element	1
3	M17499-1	Nipple	1
4	M22872-2	Pump, Fuel	1
5	69246	Nipple, Pipe 1/8 in.	1
6	M3974-2	Valve, Solenoid	1
7	1000513	Connector, Male	1
8	*HC5-7C	Screw, Hex hd. 5/16-18 x 3/4 in.	4
9	*WLM-5C	Lockwasher, 5/16 in.	4
10	*WP-5C	Washer, Plain, 5/16 in.	4
11	M22348	Adaptor	1
12	*RF3-6	Screw, Rd. hd., No. 10-32 x 3/4 in.	3
13	*WLM-3	Lockwasher No. 10	3
13A	WP-3C	Washer, Plain	3
14	M18436	Spring	1
15	M22873	Coupling	1
16	M18894-6	Motor	1
	M3486-18	Tubing, Varnish, Solenoid leads	1
	1001349	Connector, Solenoid valve	1

NA - Not available as a service part. Order individual parts
* Standard hardware. Procure locally.

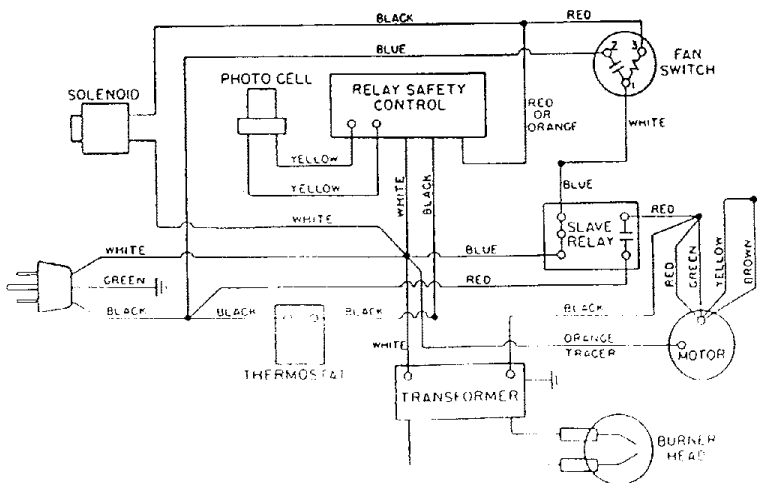


Figure 2. Wiring Diagram

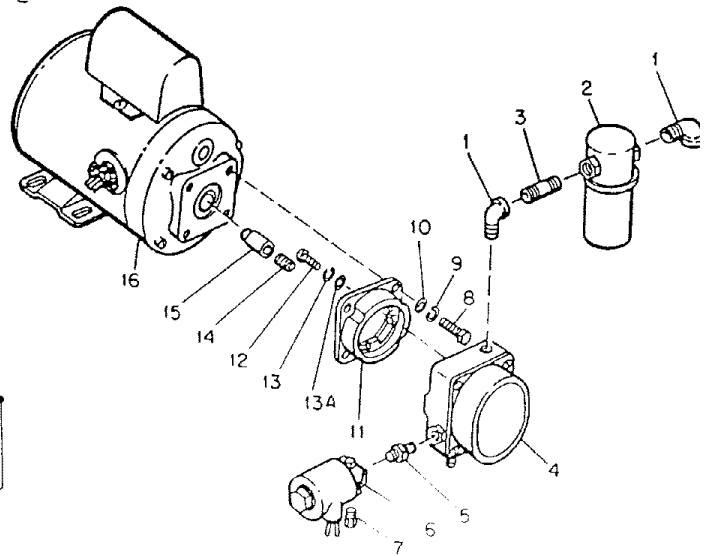


Figure 4. Motor and Pump Assembly

ASSEMBLY

Index No.	Part Number	Part Name	Qty	Index No.	Part Number	Part Name	Qty
1	M19519B	Nose Cone	1	28	NTF-3C	Nut, Torque lock 10-32	1
	M11084-27	Screw, Hex hd, self-tapping, No. 10-12 x 1/2 (Nose cone attaching)	6	29	M4849	Full Line, Pump to Nozzle	1
2	M21821-1B	Outer Shell	1	30	M12461-2	Screw, Hex hd No. 6-32 x 3/8	2
	M11084-27	Screw, Hex hd, self-tapping, No. 10-12 x 1/2 (Shell attaching)	6	31	M13963A	Clamp, Photo cell	1
3	M3530	Grommet	5	32	M13962A	Tube, Photo cell	1
4	M21767B	Cover, Outer shell	1	33	M10908-1	Screw, Hex hd, self-tapping No. 6-32 x 1/4	2
	M11084-27	Screw, Hex hd, self-tapping No. 10-12 x 1/2 (Cover attaching)	4	34	M23802-4	Photo cell	1
	M11271-6	Nut, Timmerman	4	35	M12461-14	Screw, Hex hd No. 8-32 x 3/8 in.	1
	M12461-26	Screw, Hex hd No. 10-32 x 3/8 in. (Cover attaching)	1	36	NTC-1C	Nut, Torque lock No. 6-32	2
5	M22720B	Support, Cover	1	37	NTC-2C	Nut, Torque lock, No. 8-32	2
6	M21768B	Shell Extension Assembly	1	38	M21865-1A	Bracket Assembly, Photocell	1
	M11084-27	Screw, Hex hd, self-tapping No. 10-12 x 1/2 in. (Shell extension attachment)	4	39	M18867	Spacer	2
7	M19073-3	Combustion Chamber Assy	1	40	M5895	Switch, Thermal	1
8	M23537	Plate, Deflector	1		ST2-8AC	Screw, Rd hd No. 8	2
	M11084-27	Screw, Hex hd, self-tapping, No. 10-12 x 1/2 (Deflector plate attaching)	8	41	M21788-1	Wire Harness Assy (Thermal switch)	1
9	M19517-1	Nozzle and Electrode Adapter Assembly	1	42	M25121C	Bracket, Thermostat	1
10	M16741-18	Ring, Retaining	1		M11084-27	Screw, Hex hd, self-tapping No. 10-12 x 1/2 (Bracket to Outer Shell)	2
11	M3981	Electrode	2	43	M25297-5	Thermostat Assy	1
12	M16712	Bushing, Electrode	2		RC1-3C	Screw, Rd hd No. 6-32 x 3/8 in.	2
	M12461-14	Screw, Hex hd No. 8-32 x 3/8 in. (Electrode clamping)	2		NTC-1C	Nut, Torque lock, 6-32	2
13	M18775	Bracket, Nozzle	1	44	M19516B	Handle, Front	1
14	M6296	Nozzle	1	45	M19515B	Handle, Rear	1
15	M4274	Spring	1		M12345-49	Screw, Oval hd No. 10-24 x 2-1/4 in. (Handle attaching)	8
16	M18776	Adapter	1		NTC-3C	Nut, Torque lock No. 10-24 (Handle attaching)	8
17	M2294	Elbow	1	46	M3334-4	Fuel Line Assembly	1
	M11084-27	Screw, Hex hd, self-tapping No. 10-12 x 1/2 in. (Deflector plate attaching)	2		M3334-10	Fuel Line Assembly	1
18	M10816-35	Electrode Lead	2	47	M18919-1	Fuel Intake Tube	2
19	1000576	Grommet	5	48	M23284	Cap, Fuel Filler	1
20	M19458	Fan	1	49	M18053	Screen, Fuel Filler neck	1
21	M21804	Key, Fan locating	1	50	M21820-1B	Fuel Tank	1
22	M23365-2	Motor and Pump Assembly (See figure 5)	NA	51	M8257	Plug, Pipe	1
	HC5-5C	Screw, Hex hd 5/16-18 x 5/8 in. (Motor Mounting)	4	52	M24270	Cover, Terminal strip	1
	WP-5C	Washer, Plain, 5/16 in. (Motor Mounting)	4	53	M22012	Control, Safety	1
	NTC-5C	Nut, Torque lock 5/16-18 (Motor Mounting)	4		M5187	Connector, Wire	3
23	M19625B	Bracket, Support	1		M3538	Connector, Wire	4
24	M19623-1B	Bracket Assembly, Support	1	54	M21686	Relay, Slave	1
25	HF3-3C	Screw, Hex hd No. 10-32 x 3/8 in. (Support bracket)	2	55	M6306	Cover, Box	1
26	WLM-3	Washer, Lock No. 10	2		M13942-2	Connector, Wire	1
27	M12461-26	Screw, Hex hd, No. 10-32 x 3/8 in.	1		M13942-4	Connector, Wire	4
				56	M3011	Box, Switch	1
					M12461-27	Screw, Hex hd No. 10-32 x 1/2 in. (Box attaching)	2
					NTF-3C	Nut, Torque lock No. 10-32	2
					1001349	Connector, Wire	1
				57	M10813-12	Cord Assembly, Extension	1
				58	M3530	Grommet	4
				59	M19513-1C	Bracket Assembly, Motor	1
					M11084-7	Screw, Hex hd, Self-tapping No. 10-12 x 1/2 in. (Motor Bracket attaching)	8
				60	M3259-4	Transformer	1
					NPC-4C	Nut, Plain hex 1/4-20 (Transformer attaching)	4
					WLM-4C	Washer, Lock 1/4 in. (Transformer attaching)	4
				61	M18774	Axle	1
				62	M8111	Wheel	2
				63	WP-10C	Washer, Plain	4
				64	C5-10C	Pin, Cotter	2
				65	M18519A	Frame Support, Wheel	1