

FLEETKING PORTABLE HEATER MODELS MSH-90 and MSH-140
 Form No. MSH-1640 9-65

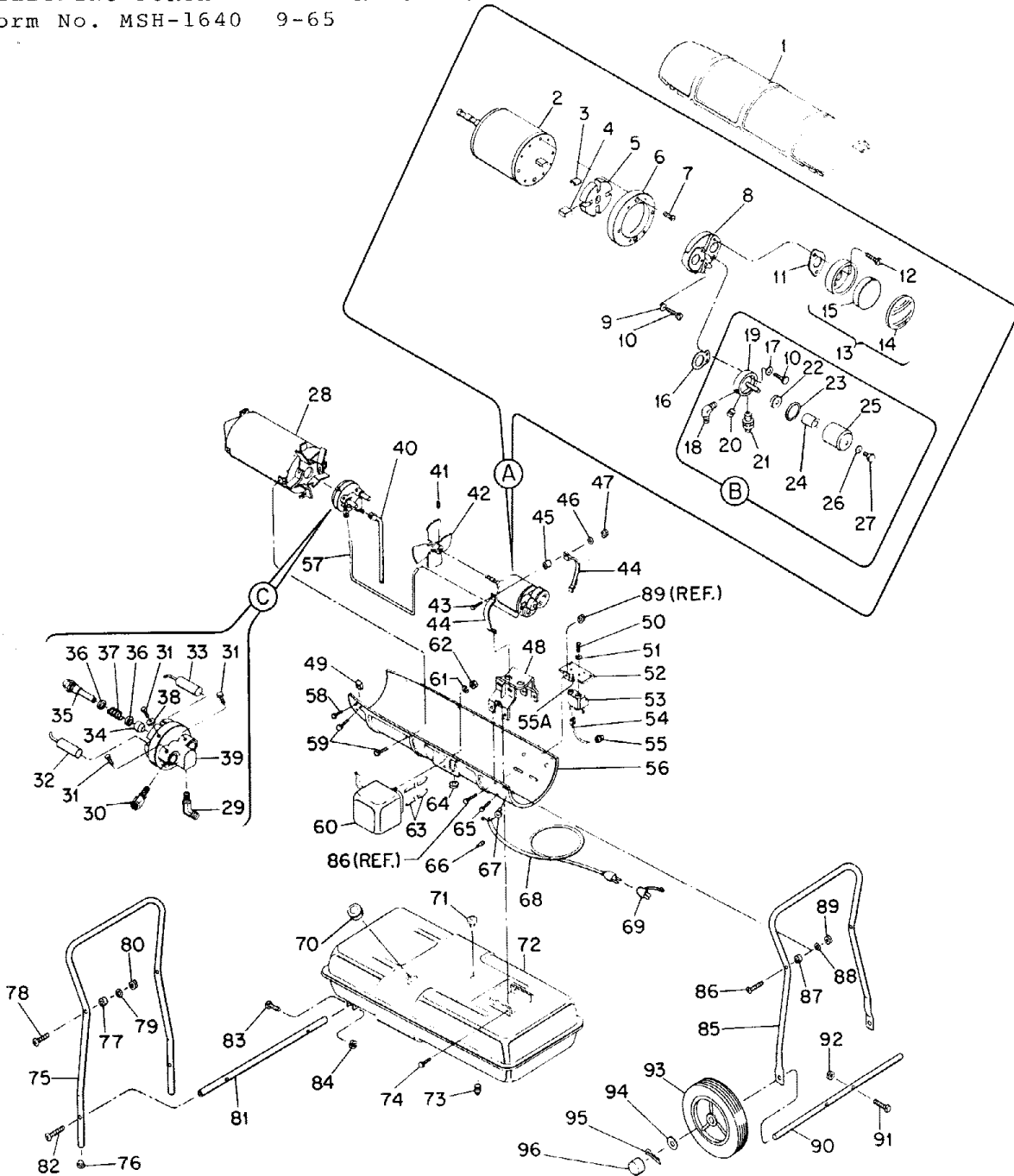


Figure 11. 75,000 BTU Portable Heater, Exploded View

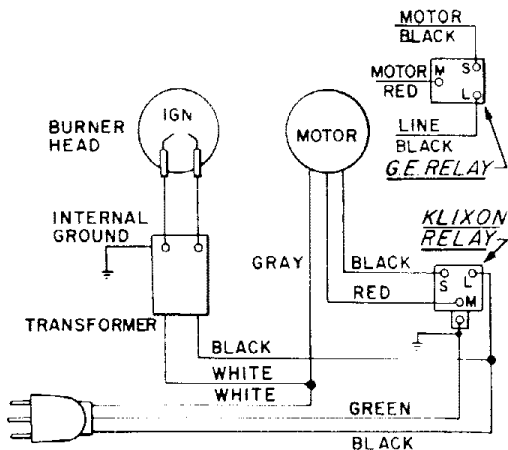


Figure 6. Wiring Diagram for 75,000 BTU Heater

FLEETKING PORTABLE HEATER MODELS MSH-90 and MSH-140

Form No. MSH-1640 9-65 PARTS LIST FOR 75,000 BTU HEATER

Index No.	Part Number	Part Name	Quan.	Index No.	Part Number	Part Name	Quan.
1	M11919	Shell, Upper	1	41	SF4-2-1/2KC	Setscrew, Socket hd, cup pt. 1/4-28 x 5/16	2
(A)	M14658G1	Motor Package Assy	1	42	M13580	Fan, 13° pitch	1
2	M11938	Motor	1	43	HC4-10C	Screw, 1/4-20 x 1-1/4	2
3	M11966-5	Spring	1	44	M10964-1	Clamp, Motor	4
4	M8643	Blade	4	45	13620	Spacer	2
5	M11959	Rotor	1	46	WLM-4	Washer, Lock, 1/4	2
6	M8645	Pump Body	1	47	NPC-4C	Nut, Hex, 1/4-20	2
7	FHPF3-5C	Screw, Fil hd, 10-32 x 5/8	2	48	M11942	Bracket, Motor Support	1
8	M8646	End Cover, Pump	1	49	M11271-6	Nut, Tinnerman	6
9	WP-3C	Washer, Flat	4	50	RC-2-2C	Screw, Rd hd, 8-32 x 1/2	2
10	M12461-35	Screw, 10-32 x 1-3/4, hex hd	4	51	WLI-2	Washer, Lock	2
11	M10257	Gasket	1	52	M11952	Bracket, Relay Mounting	1
12	FHPF3-12C	Screw, 10-32 x 1-1/2, fil hd	2	53	M12462-2	Relay	1
13	M8769	Air Intake Cleaner	1	54	M9946G4	Wire Assy	1
14	M9191	Cover, Filter	1	55	M13942-4	Connector	1
15	*M8849	Element, Filter	1	55A	ST2-2AC	Screw, Round hd, 8 x 1/4, rd hd	1
16	M8784	Gasket	1	56	M11917G1	Shell, Lower	1
17	WLI-3	Washer, Lock	4	57	*M11943	Air Line	1
(B)	M9791G2	Output Filter Assembly	1	58	M11084-27	Screw, 10-12 x 1/2, Type A	6
18	69248	Elbow, Male	1	59	M10908-51	Screw, 10-24 x 1/2	4
19	M9716	Block, Filter	1	60	M3259-4	Transformer	1
20	M10837	Plug, Pipe	1	61	WLM-4	Lockwasher, 1/4	2
21	M8943G1	Relief Valve Assembly	1	62	NPC-4C	Nut, Hex, 1/4-20	2
22	*M10261	Filter	1	63	M10816G11	Lead Assy, Electrode	2
23	M9769	Gasket	1	64	1000577	Grommet	1
24	*M9942G1	Filter Element Assembly	1	65	M10908-51	Screw, 10-24 x 1/2	2
25	M9767	Bowl	1	66	M13942-4	Connector	1
26	M9770	Washer	1	67	M11954	Bushing, Strain Relief	2
27	HF4-4C	Screw, 1/4-28 x 1/2, hex hd	1	68	M10813G1	Service Cord Assy	1
28	M11920G1	Combustion Chamber	1	69	M9050	Adapter	1
(C)	*M11929G1	Burner Assy	1	70	M3353	Cap, Fuel Tank	1
29	M11931	. Elbow, Male, 45°	1	71	M10990-3	Bushing	1
30	M5976	. Connector, Male	1	72	M11636G3	Fuel Tank Assy	1
31	HF3-3C	. Screw, Hex hd, 10-32 x 3/8	3	73	M13990	Plug	1
32	*M8989	. Electrode LH	1	74	M10908-51	Screw, 10-24 x 1/2	4
33	*M8990	. Electrode RH	1	75	M13920	Handle, Front	1
34	M8882	. Sleeve	1	76	M8704-2	Button, Plug	2
35	M8667	. Nozzle, Siphon	1	77	M13042	Spacer	2
36	M10659-1	. Washer, Nozzle Seal	2	78	M12345-29	Screw, 10-24 x 1, oval hd	2
37	M10809-1	. Spring, Nozzle Seal	1	79	WP-3C	Washer, 3/16 ID	2
38	WP-3C	. Washer, Flat	1	80	NTC-3C	Nut	2
39	M8716G2	. Burner Head	1	81	M14827	Rod, Tie	1
40	M13846G1	Fuel Filter Assy	1	82	M12619-23	Screw, 10-24 x 1, oval hd, Type S	2
M13025	Decal, Trade Name	1	83	HC3-7C	Screw, 10-24 x 7/8, hex hd	2	
M14984	Decal, Operating Instructions	1	84	NTC-3C	Nut	2	
M14987	Decal, Nameplate	1	85	M13919	Handle, Rear	1	
M12646	Decal, Wiring Diagram	1	86	M12345-29	Screw, 10-24 x 1, oval hd	2	
M12806	Decal, Caution	1	87	M13042	Spacer	2	
M14996	Decal, Patent No.	1	88	WP-3C	Washer, 3/16 ID	2	
M13386-4	Touch-up Paint, Aerosol Can, Yellow	1	89	NTC-3C	Nut	2	
M13386-6	Touch-up Paint, Aerosol Can, Red	1	90	M14828	Axle	1	
M13386-8	Touch-up Paint, Aerosol Can, Black	1	91	HC3-7C	Screw, 10-24 x 7/8, hex hd	2	
			92	NTC-3C	Nut	2	
			93	M14830	Wheel	2	
			94	WP-8C	Washer	2	
			95	M13280	Cotter Pin	2	
			96	M14831	Hub Cap	1	

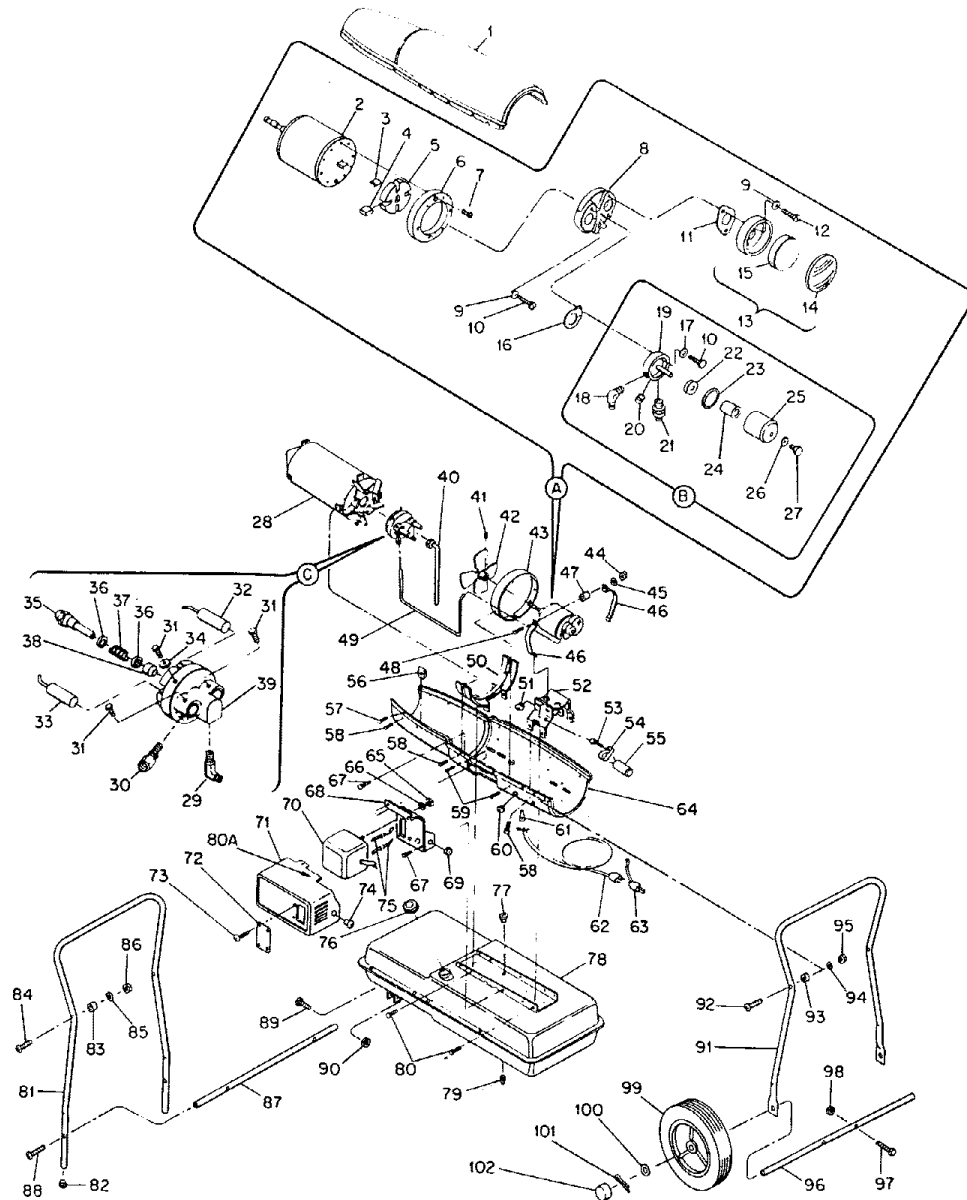


Figure 12. 120,000 BTU Portable Heater, Exploded View

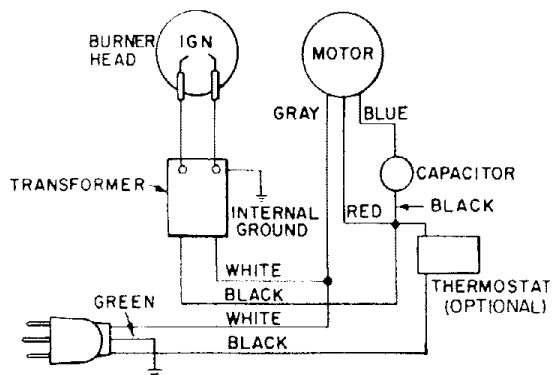


Figure 7. Wiring Diagram for 120,000 BTU Heater

PARTS LIST FOR 120,000 BTU HEATER

Index No.	Part Number	Part Name	Quan.	Index No.	Part Number	Part Name	Quan.
1	M13520G2	Shell, Upper	1	44	NPC-4C	Nut	2
(A)	*M14234G1	Motor Package Assy	1	45	WLM-4	Lockwasher, 1/4	2
2	M12811	Motor	1	46	M10964-1	Clamp, Motor	4
3	M11966-5	Spring	1	47	M13620	Spacer	2
4	M8643-3	Blade	4	48	HC4-10C	Screw, 1/4-20 x 1-1/4	2
5	M11969	Rotor	1	49	M14245	Air Line	1
6	M8645-3	Pump Body	1	50	M12828	Bracket, Shell Support	1
7	FHPF3-7C	Screw, 10-32 x 7/8, fil hd	2	51	1000577	Grommet	1
8	M8646	End Cover, Pump	1	52	M12829	Bracket, Motor Support	1
9	WP-3C	Washer, Flat	4	53	M10908-51	Screw, 10-24 x 1/2, Type S	1
10	M12461-36	Screw, 10-32 x 2, hex hd	4	54	M12651	Clamp, Tinnerman	1
11	M10257	Gasket	1	55	M12650-1	Capacitor	1
12	FHPF3-14C	Screw, 10-32 x 1-3/4, fil hd	2	56	M11271-6	Nut, Tinnerman	6
13	M8769	Air Intake Cleaner	1	57	M11084-27	Screw, 10-24 x 1/2	6
14	M9191	Cover, Filter	1	58	M10908-51	Screw, 10-24 x 1/2	8
15	*M8849	Element, Filter	1	59	M10908-53	Screw, 10-24 x 3/4	4
16	M8784	Gasket	1	60	M5890	Grommet	1
17	WLI-3	Washer, Lock	4	61	M13942-4	Connector	2
(B)	M9791G2	Output Filter Assembly	1		M9900G10	Wire Assembly	1
18	69248	Elbow, Male	1		M9900G30	Wire Assembly	1
19	M9716	Block, Filter	1	62	M10813G20	Extension Cord Assy	1
20	M10837	Plug, Pipe	1	63	M9050	Adapter	1
21	M8943G1	Relief Valve Assembly	1	64	M13983	Shell, Lower	1
22	*M10261	Filter	1	65	NPC-4C	Nut, Hex, 1/4-20	2
23	M9769	Gasket	1	66	WLM-4	Lockwasher, 1/4	4
24	*M9942G1	Filter Element Assembly	1	67	M10908-51	Screw, 10-24 x 1	4
25	M9767	Bowl	1	68	M12841G1	Mounting Bracket	1
26	M9770	Washer	1	69	M6087	Grommet	1
27	HF4-4C	Screw, 1/4-28 x 1/2, hex hd	1	70	*M3259-4	Transformer	1
28	M12934G1	Combustion Chamber	1	71	M14985G1	Cover Assy, Transformer	1
(C)	*M12947G3	Burner Assy	1	72	M14986	Plate, Cover	1
29	M14256	. Elbow	1	73	FHF3-3C	Screw, Fil hd, 10-24 x 3/8	4
30	M12949	. Connector	1	74	M11143-1	Bushing, Strain Relief	1
31	HF3-3C	. Screw, 10-32 x 3/8	3	75	M10816G12	Lead, Electrode	2
32	M12952	. Electrode RH	1	76	M3353	Cap, Fuel Tank	1
33	M12951	. Electrode LH	1	77	M14260	Bushing, Rubber	1
34	WP-3C	. Washer, Flat	1	78	M12820G5	Fuel Tank	1
35	M14293	. Nozzle, Siphon	1	79	M13990	Plug	1
36	M10659-1	. Washer, Nozzle Seal	2	80	M10908-51	Screw, 10-24 x 1/2	8
37	M10809-1	. Spring, Nozzle Seal	1	80A	STP2-2A	Screw, 8 x 1/4 (ground)	1
38	M8882	. Sleeve	1	81	M13918	Handle, Front	1
39	M12948G1	. Burner Head	1	82	M8704-2	Button, Plug	2
40	M14259G1	Fuel Filter	1	83	M13042	Spacer	2
41	SF4-2-1/2KC	Setscrew, Socket hd, cup pt. 1/4-28 x 5/16	2	84	M12345-29	Screw, 10-24 x 1, oval hd	2
42	*M13038	Fan	1	85	WP-3C	Washer, 3/16 ID	2
43	M12830	Fan Housing	1	86	NTC-3C	Nut	2
				87	M13979	Rod, Tie	1
				88	M12619-23	Screw, 10-24 x 1, oval hd, Type S	2
				89	HC3-7C	Screw, 10-24 x 7/8, hex hd	2
				90	NTC-3C	Nut	2
				91	M13917	Handle, Rear	1
				92	M12345-29	Screw, 10-24 x 1, oval hd	2
				93	M13042	Spacer	2
				94	WP-3C	Washer, 3/16 ID	2
				95	NTC-3C	Nut	2
				96	M13980	Axle	1
				97	HC3-7C	Screw, 10-24 x 7/8, hex hd	2
				98	NTC-3C	Nut	2
				99	M14830	Wheel	2
				100	WP-8C	Washer	2
				101	M13280	Cotter Pin	2
				102	M14831	Hub Cap	1
	M13025	Decal, Trade Name	1				
	M14984	Decal, Operating Instructions	1				
	M14988	Decal, Nameplate	1				
	M14678	Decal, Wiring Diagram	1				
	M12806	Decal, Caution	1				
	M14996	Decal, Patent No.	1				
	M13386-4	Touch-up Paint, Aerosol Can, Yellow	1				
	M13386-6	Touch-up Paint, Aerosol Can, Red	1				
	M13386-8	Touch-up Paint, Aerosol Can, Black	1				