

Figure 13. Heater Exploded View

Fig. 13 Index No.	Part Number	Part Name	AM100	AM100S
1	M13134-3H	Shell, Upper	1	1
2	M16781-4	Chamber, Combustion	1	1
	M11084-27*	Screw (Combustion Chamber attaching front)	2	2
	M11084-29*	Screw (Combustion Chamber attaching rear)	2	2
3	M15995	Plug, Button (Combustion Chamber rear head)	1	-
4	M16660	Bracket, Photocell	-	1
	M10908-1*	Screw (Photocell Bracket to Combustion Chamber rear head)	-	2
5	M16656-1	Cell and Bushing Assy	-	1
6	Ref.	Burner Head Assembly (See figure 14)	1	1
	M11084-27*	Screw (Burner Head to Combustion Chamber)	3	3
7	M16879	Air Line	1	1
7A	M12461-27	Screw, Slotted hex hd., No. 10-32 x 1/2 in.	-	1
7B	M24717	Clamp, Tube	-	1
7C	WLM-3	Lockwasher, No. 10	-	1
7D	NPF-3C	Nut, Plain No. 10-32	-	1
8	M15807	Strap, Retainer	1	1
	M11084-27*	Screw (Retainer Strap to Lower Shell)	2	2
9	M23147	Fan	1	1
10	SF4-2-1/2K	Setscrew, Soc. Hd., cup pt., 1/4-20 (Fan to Motor Shaft)	2	2
11	Ref.	Motor Package Assembly (See figure 16)	1	1
12	M16661	Clamp, Motor	4	4
13	HC4-10C*	Screw (Motor Clamps)	2	2
14	WLM-4*	Lockwasher, 1/4 in. (Motor Clamps)	2	2
15	NPC-4C*	Nut, Hex, 1/4-20 (Motor Clamps)	2	2
16	M16777H	Shell, Lower	1	1
17	M11084-27*	Screw (Upper Shell to Lower Shell)	6	6
18	M11271-6*	Nut, Tinnerman (Upper Shell to Lower Shell)	6	6
19	M12330A	Bracket, Shell Support	1	1
	M11084-27*	Screw (Support Bracket to Lower Shell and Fuel Tank)	4	4
	M11084-29*	Screw (Lower Shell to Support Bracket)	2	2
20	1000576	Grommet (Ignition cable thru Lower Shell)	2	3
21	M15809	Plug, Button (17/32 in. dia. hole)	1	-
22	M16646	Bracket, Motor Support	1	1
	M11084-27*	Screw (Motor Support Bracket to Lower Shell and Fuel tank)	6	6
23	1000576	Grommet (Motor Leads thru Motor Support Bracket)	1	1
24	M16697	Transformer, 5000 Volt	1	1
	M11084-27	Screw (Transformer to Motor Support Bracket)	2	2
25	M11954	Bushing, Strain Relief (Service Cord to Lower Shell)	1	1
26	M10813-33	Cord Assembly, Extension	1	-
26	M10813-34	Cord Assembly, Extension	-	1
27	M18360-4F	Tank Assembly, Fuel	1	1
28	M23284	Cap, Fuel Tank	1	1
29	M18053	Screen, Filler neck	1	1
30	M10990-3	Bushing, Rubber (Fuel Filter into Fuel Tank)	1	1
31	M21040	Plug, Pipe, Hex hd., 1/4-18	1	-
	M24973	Plug, Drain	-	1
32	M11952	Bracket, Starting Relay Mtg.	1	-

* Standard hardware.

Fig. 13 Index No.	Part Number	Part Name	AM100	AM100S
33	M12462-9	Relay, Starting	1	-
	RC2-2C*	Screw (Starting Relay to Mounting Bracket)	2	-
	WLI-2	Lockwasher, Internal No. 8	2	-
	ST2-2AC	Screw (Grounding)	1	1
	M11084-27	Screw (Relay Bracket to Shell)	1	1
	M16852-5	Relay Bracket Assembly	-	NA
34	M12462-9	Relay	-	1
35	RC2-2C*	Screw (Relay to Relay Brkt)	-	2
36	M14378-2	Relay Assembly	-	1
37	M12461-2*	Screw (Relay to Relay Brkt)	-	1
38	M14360	Breaker, Circuit	-	1
39	M16851-1	Bracket Assembly, Control	-	1
	M9900-62	Wire Assembly, Black (To Starting Relay)	1	1
	M9900-80	Wire Assembly (To Breaker)	-	1
	M16615-1	Harness Assembly	-	1
	M13942-2	Connector (Cell and Bushing and Relay to Circuit Breaker)	-	3
	M13942-4	Connector (Relay Leads)	2	2

Fig. 16

Index No.	Part Number	Part Name	Qty.
-	M23149-1	Motor Package Assembly	1
1	M16545	. End Cover, Filter	1
2	M12461-31*	. Screw (Filter End Cover to Pump End cover)	4
3	WLI-3	. Lockwasher, Internal No.10	4
4	M12179	. Intake Air Filter	1
5	M12244-1	. Output Filter Assy	1
6	M11637	. Filter, Lint	1
7	M12233	. Front Cover, Pump (Port Plate)	1
8	M12461-32*	. Screw (End Cover to Motor)	6
9	WLI-3	. Lockwasher, Internal No.10	6

Fig. 16

Index No.	Part Number	Part Name	Qty.
10	M8643	. Blade	4
11	M22456-1	. Rotor	1
12	M22009	. Insert	1
13	M8645	. Pump Body	1
14	FHPP3-4C	. Screw (Pump Body to Motor)	2
15	M5976	. Connector, Male	1
16	M22997	. Plug	1
17	M23105	. Screw, Pressure Adjustment	1
18	M10993-1	. Spring, Compression (Pressure Relief)	1
19	M8940	. Ball, 1/4 in. dia.	1
20	M23107-1	. Motor	1

* Standard hardware. Purchase locally.

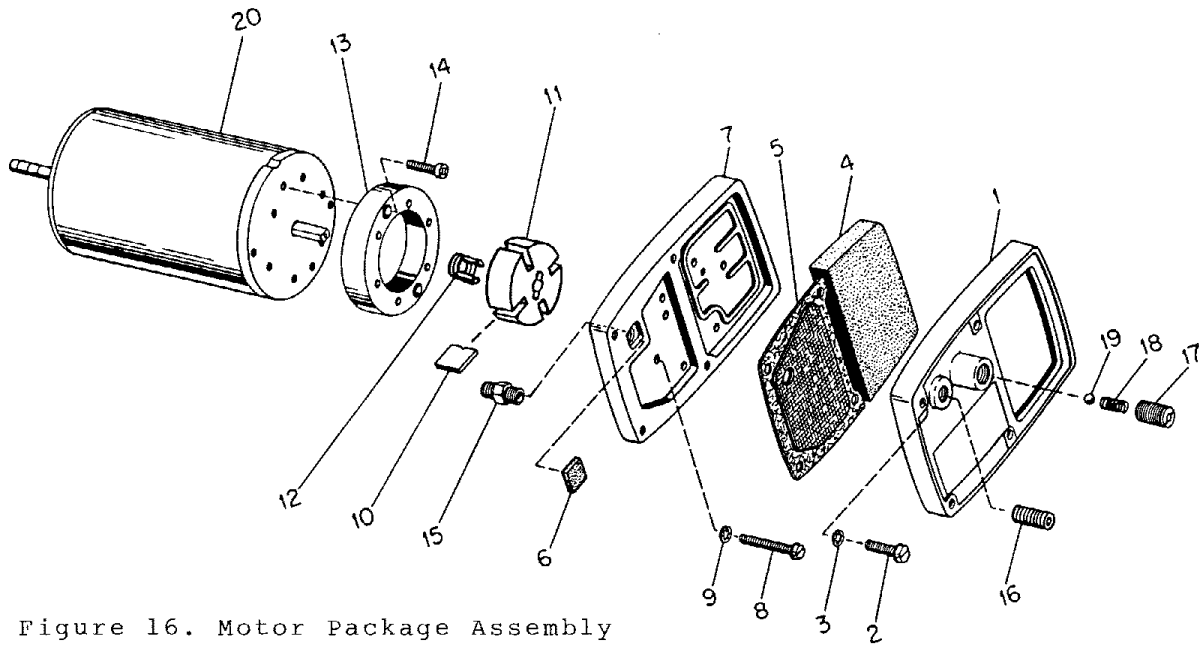


Figure 16. Motor Package Assembly

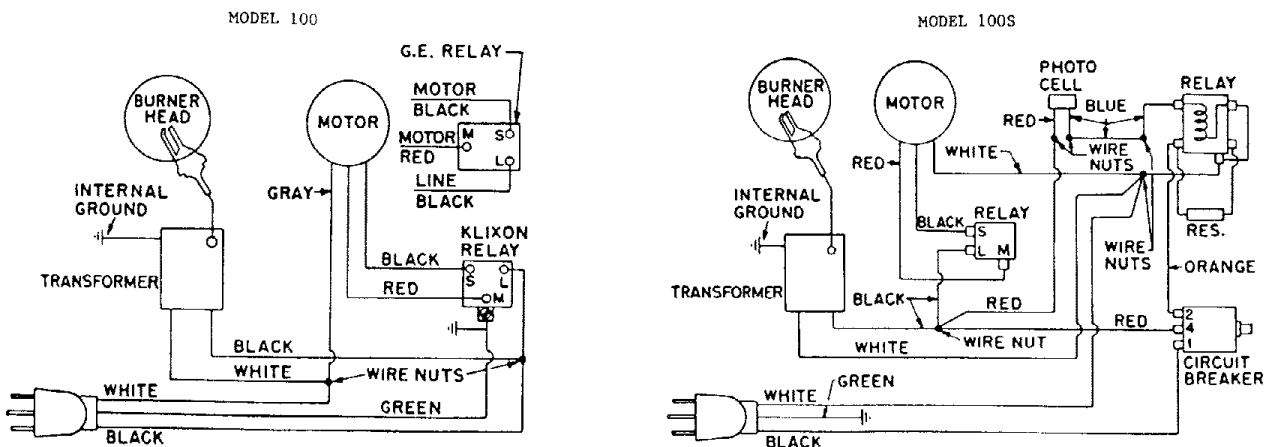


Figure 9. Wiring Diagram

AMOCO MODEL AM-100 and AM-100S
 Spec. No. 3114G08 and 3114G23
 Form No. 2835 (6/72)

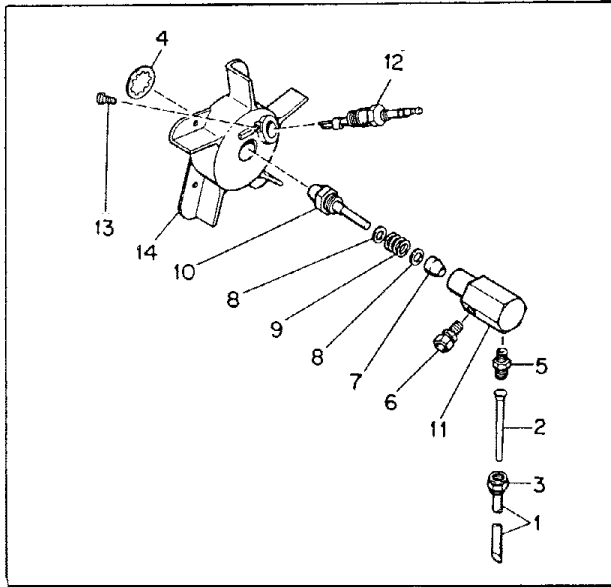


Figure 14. Burner Head Assembly

BURNER HEAD ASSEMBLY

Fig. 14

Index No.	Part Number	Part Name	Qty.
14-	M23150-1	Burner Head Assembly	1
1	M16790-2	. . Filter Tube (AM100)	1
	M16790-8	. . Filter, Tube (AM100S)	1
2	M19630	. . Filter, Fuel	1
3	M13849	. . Nut, Flared	1
4	M16741-18	. . Ring, Retaining	1
	M23151-1	. . Nozzle Adapter Assy	1
5	M16791	. . Connector, Male	1
6	M5976	. . Connector, Male	1
7	M8882	. . Sleeve, Nozzle Seal	1
8	M10659-1	. . Washer, Nozzle Seal	2
9	M10809-1	. . Spring, Nozzle Seal	1
10	M23103	. . Nozzle, Aspirating 0.66 GPH	1
11	M16535	. . Adapter, Nozzle	1
12	M16895-1	. . Spark Plug Assy	1
13	M12461-51	. . Screw	1
14	M16534	. . Body, Burner Head	1

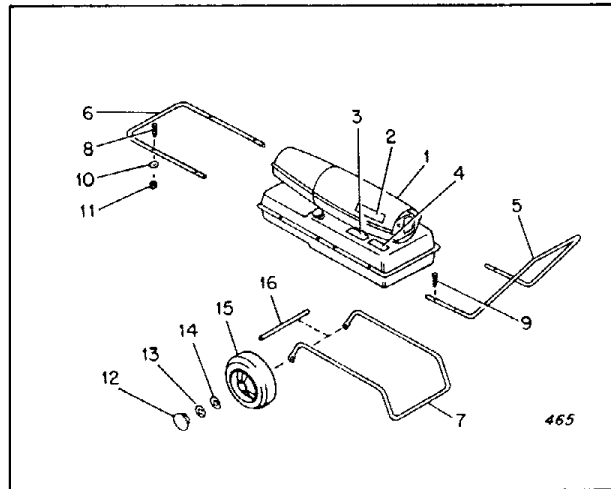


Figure 15. Wheels, Handles, Markings

WHEELS, HANDLES, MARKINGS

Fig. 15

Index No.	Part Number	Part Name	Qty.
-	M16749	Decal, Safety Control (AM100S)	1
-	M22898	Decal, Name Plate	1
-	M23152-17	Decal, Model (AM100S)	1
-	M23152-8	Decal, Model (AM100)	1
1	M12634	Decal, Wiring Diagram (inside Upper Shell) (AM100)	1
-	M17218	Decal, Wiring (AM100S)	1
2	M14994	Decal, Trade Name	1
3	M17159	Decal, Private Label	1
4	M22743	Decal, Warning	1
5	M15131A	Handle, Rear	1
6	M15808A	Handle, Front	1
7	M12342B	Frame, Wheel Support	1
8	M12345-31	Screw, Oval hd., Mach., No. 10-24 x 1-1/4 in.	2
9	M12345-34	Screw, Oval hd., Mach., No. 10-24 x 2 in.	8
10	WP-3C	Washer, Flat, No. 10	2
11	NTC-3C	Nut, No. 10-24, Torque Lock	10
12	M16802	Hub Cap	2
13	M16741-15	Ring, Retaining	2
14	WP-8C	Washer, Flat, 1/2 in.	2
15	M19294	Wheel	2
16	M16801	Axle	1

TOUCH-UP PAINT

M23353-9	Paint, White, Aerosol Can
M23353-10	Paint, Black, Aerosol Can
M23353-8	Paint, Red, Aerosol Can