

| Key No. | Part Number | Part Name or Description | Qty. |
|---------|-------------|----------------------------------|------|
| 1 | M11084-26 | Screw, Hex hd., 10-12 x 3/8 in. | 6 |
| | M30725-05 | Upper Shell Assembly | 1 |
| 2 | M17539-9 | Rivet | 4 |
| 3 | M28153 | Handle | 1 |
| 4 | M30724AZ | Shell | 1 |
| 5 | M30883-01 | Chamber Assembly, Combustion | 1 |
| 6 | M11084-26 | Screw, Hex hd., 10-12 x 3/8 in. | 4 |
| 7 | M29707-02 | Burner Head Assembly | 1 |
| 8 | M29824 | Nut, Special 14MM | 1 |
| 9 | M29835 | Spark Plug | 1 |
| 10 | M16741-18 | Ring, Retainer | 1 |
| | M29705-02 | Nozzle Adapter Assembly | 1 |
| | M30875 | Nozzle, Siphon | 1 |
| 12 | M29805 | Adapter, Nozzle | 1 |
| 13 | M29615-01 | Bracket Assembly, Nozzle Adapter | 1 |
| 14 | M10908-1 | Screw, Hex hd., 6-32 x 1/4 in. | 2 |
| 15 | M16656-4 | Photocell and Bushing Assembly | 1 |
| 16 | M16660 | Bracket, Photocell | 1 |
| 17 | M29652-03 | Tubing, Fuel | 1 |
| 18 | M29814-01 | Filter Assembly, Fuel | 1 |
| 19 | M10990-3 | Bushing, Rubber | 1 |
| 20 | M11084-26 | Screw | 1 |
| 21 | M13942-5 | Connector, Wire | 2 |
| 22 | M13942-7 | Connector, Wire | 1 |
| 23 | 1000576 | Grommet | 2 |
| 24 | M30884 | Fan | 1 |
| 25 | M16841-16 | Wire Assembly | 1 |
| 26 | M28898-03 | Safety Control Assembly | 1 |
| 27 | M29652-01 | Tubing, Airline | 1 |
| 28 | M11084-26 | Screw, Hex. hd. | 2 |
| 29 | M16697-02 | Transformer Assembly | 1 |
| 30 | NTC-3C | Nut, No. 10-24 | 4 |
| 31 | M12461-50 | Screw, No. 10-24 x 3/8 | 4 |
| 32 | M29800 | Decal, Reset | 1 |
| 33 | M29750-02 | | 1 |
| 34 | M11084-26 | Screw | 4 |
| 35 | M29616 | Motor Mounting Bracket | 1 |
| 36 | M11271-6 | Nut, Tinnerman | 6 |
| 37 | M11143-1 | Bushing, Strain Relief | 1 |
| 38 | M10813-74 | Extension Cord Assembly | 1 |
| 39 | M11084-26 | Screw | 4 |
| 40 | M11271-6 | Nut, Tinnerman | 4 |
| 41 | M30763AZ | Shell, Lower | 1 |
| 42 | M30715-01 | Cap, Fuel | 1 |
| 43 | M30873-01AA | Tank Assembly, Fuel | 1 |
| 44 | M11084-26 | Screw, Hex., hd. 10-12 x 3/8 in. | 2 |
| 45 | M30726AA | Bracket End Cover | 1 |
| 46 | M11084-26 | Screw, Hex. hd., 10-12 x 3/8 in. | 2 |
| 47 | M31348-01 | Assembly Shell Support | 1 |
| 48 | M50323 | Screen, Filter | 1 |

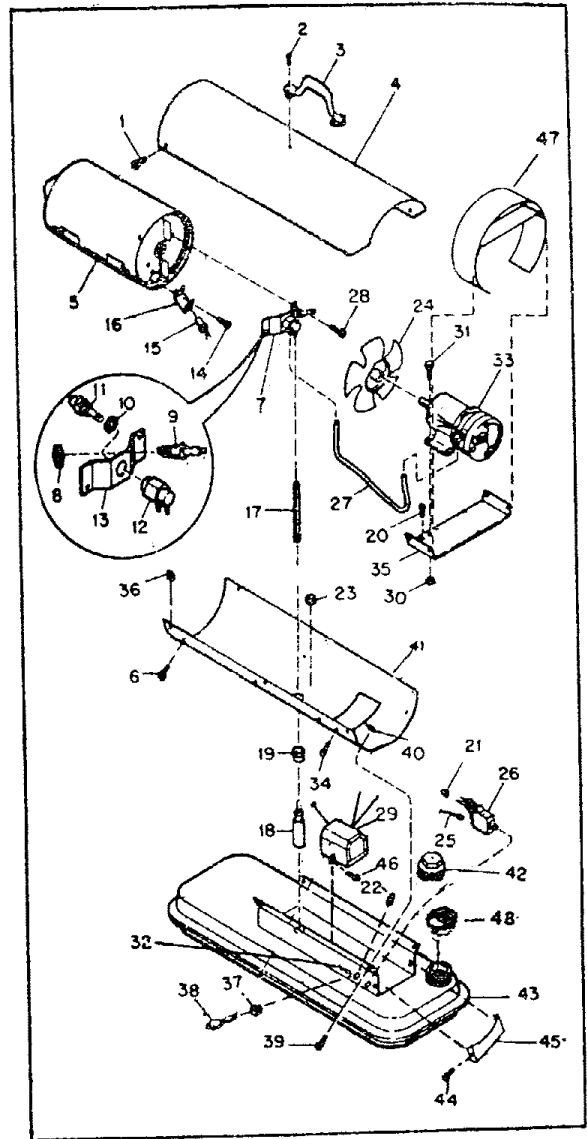


Figure 1, Exploded View

SPECIFICATIONS

| | |
|--|---------------------------------|
| Output Rating (BTU per hour) | 50,000 |
| Amperage (During normal run) | 2.85 |
| Starting | 4.00 |
| Air Pump Pressure (PSI) | 3.6 |
| Weight (Approx. lbs.) Shipping | 34 |
| Fuel Tank Capacity, U.S. Gallons | 3.50 |
| Fuel Consumption, Approx. U.S. Gal. per hour | 0.36 |
| Electrical Requirements Voltage | 115 |
| Cycles | 60 |
| Air Output (CFM) | 145 |
| Motor RPM | 1675 |
| Fuel | Kerosene or No. 1 Fuel Oil only |
| Duct | No Duct Recommended |

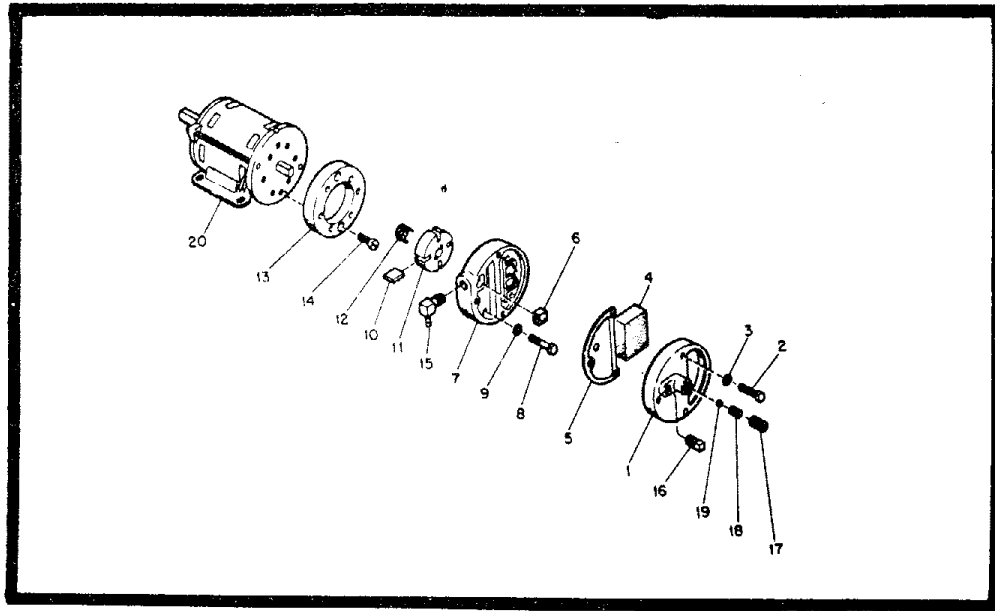


Figure 2. Motor Package Assembly

| Key No. | Part Number | Part Name or Description | Qty. |
|---------|-------------|---|------|
| 1A | M29750-02 | Motor Package Assembly | 1 |
| 1 | M29609 | •End Cover, Filter | 1 |
| 2 | M12461-31 | •Screw (Filter End Cover to Pump End Cover) | 3 |
| 4 | M29633 | •Intake Air filter | 1 |
| 5 | M29612-01 | •Output Filter Assembly | 1 |
| 6 | M29632 | •Filter, Lint | 1 |
| 7 | M29608 | •End Cover, Pump (Port Plate) | 1 |
| 8 | M12461-31 | •Screw (End Cover to Motor) | 6 |
| 10 | M8643 | •Blade | 4 |
| 11 | M22456-1 | •Rotor, Pump | 1 |
| 12 | M22009 | •Insert, Rotor | 1 |
| 13 | M8645 | •Pump Body | 1 |
| 14 | FHPF3-4C | •Screw (Pump Body to Motor) | 2 |
| 15 | M50015 | •Elbow | 1 |
| 16 | M22997 | •Plug, Socket Hd. | 1 |
| 17 | M27694 | •Screw, Pressure Adjustment | 1 |
| 18 | M10993-1 | •Spring, Compression (Pressure Relief) | 1 |
| 19 | M8940 | •Ball, ¼ in. dia. | 1 |
| 20 | M30876-01 | •Motor | 1 |

PARTS AVAILABLE—NOT SHOWN

| | |
|----------|-------------------------------|
| M50091 | Manual, Instruction From 4321 |
| M22743 | . Decal, Warning |
| M30728 | . Decal, Wiring Diagram |
| M20532-8 | . Decal, Pump Pressure |
| M18196 | . Decal, Mfg. by |
| M50011 | . Decal, Spark Plug |
| M50721 | . Decal, Tradename |
| M50621 | . Serial Number Set |
| M50723 | . Operation Instructions |
| M50624 | . Model Data |
| M50838 | . Warning, ARL |

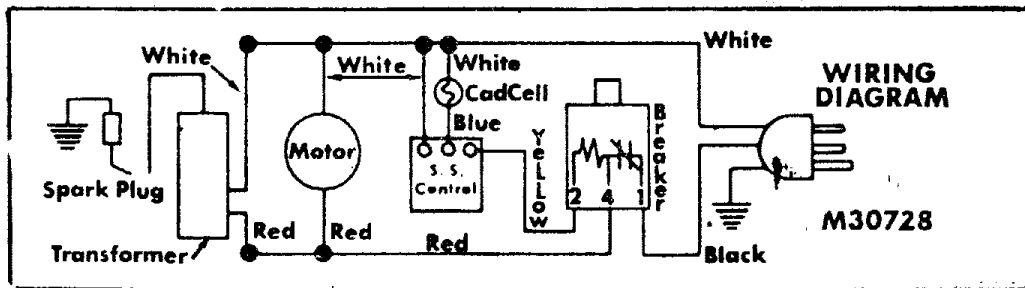


Figure 3. Wiring Diagram