

PORTABLE FORCED AIR HEATER

Illustrated Parts List

**MASTER
B100B**

IMPORTANT: Do not use key numbers when ordering service parts. Always order components by part number and description. Include model and serial numbers.

KEY NO.	PART NUMBER	DESCRIPTION	QTY.	KEY NO.	PART NUMBER	DESCRIPTION	QTY.
1	098511-61	Upper Shell	1	19	M51345-01	Fuel Line	1
2	M11084-27	Hex Head Screw, #10-16 x 1/2"	8	20	M51150-01	Fuel Filter	1
3	098512-07	Combustion Chamber	1	21	M51151-01	Fuel Line Tube	1
4	M16660	Photocell Bracket	1	22	M10990-3	Rubber Bushing	1
5	M10908-2	Hex Head Screw, #6-32 x 3/8"	2	23	M50814-06	Airline	1
6	HA3019	Photocell Assembly	1	24	098511-138	Lower Shell	1
7	***	Burner Head Assembly	1	25	M30865-02	Bushing	1
7-1	HA3009	Nozzle (Including Sleeve)	1	26	M50104-02	Bushing	1
7-2	M10659-1	Nozzle Washer	2	27	M11084-27	Hex Head Screw, #10-16 x 1/2"	6
7-3	M10809-1	Nozzle Spring	1	28	M11271-8	Clip Nut	6
7-4	M8882	Nozzle Sleeve	1	29	M15823-37	Screw, Grounding #8-18 x 1/4"	1
7-5	M50924-03	Burner Head Body	1	30	098513-21	Fuel Tank	1
7-6	M50820-02	Barb Fitting	2	31	097702-01	Fuel Cap (Includes Gasket)	1
7-7	HA3012	Spark Plug	1	32	HA3003	Safety Control	1
8	M11084-27	Hex Head Screw, #10-16 x 1/2"	3	33	M51157-01	Hex Nut, 12mm	1
9	M51153-01	Fan	1	34	M11143-1	Strain Relief Bushing	1
10	***	Motor and Pump Assembly	1	35	099896-03	Power Cord	1
10-1	097300-02	Motor (Split Phase)	1	36	M51077-01AA	Side Cover	1
10-2	079975-02	Pump Body	1	37	M11084-27	Hex Head Screw, #10-16 x 1/2"	4
10-3	FHPF3-2C	Hex Head Screw, #10-32 x 1/2"	2	38	**	Wire Connector (Blue Wires)	1
10-4	M22009	Rotor Insert	1	39	**	Wire Connector (Red Wires)	1
10-5	M22456-1	Pump Rotor	1	40	**	Wire Connector (White Wires)	1
10-6	M50545	Pump End Cover	1	41	**	Assembly Wire, Red 6"	1
10-7	M12179	Intake Filter	1	42	**	Assembly Wire, Red 14.5"	1
10-8	M16545	Filter End Cover	1	43	M27417	Drain Plug (Includes "O" Ring)	1
10-9	M8940	Steel Ball, 1/4" diameter	1				
10-10	M10993-1	Relief Spring	1				
10-11	M27694	Adjusting Screw	1				
10-12	M22997	Plug	1				
10-13	M12461-31	Hex Head Screw, #10-32 x 1"	10				
10-14	M12244-1	Output Filter	1				
10-15	M11637	Lint Filter	1				
10-16	M50820-02	Barb Fitting	1				
10-17	M8643	Blade	4				
11	M50631	Rubber Bumper	2				
12	101206-01	Motor Mounting Bracket	1				
13	097061-01	Solid State Relay	1				
14	M15823-39	Hex Head Screw, #8-18 x 1/2"	2				
15	NTC-4C	Hex Lock Nut	2				
16	M51114-01	Fan Guard	1				
17	102482-01	Ignitor Kit	1				
18	M11084-29	Hex Head Screw, #10-16 x 3/4"	2				
PARTS AVAILABLE - NOT SHOWN							
					079866-01	Tradename Decal	
					097896-04	Wheels	2
					M51015-01	Axle	1
					M12342-3	Wheel Support Frame	1
					HA2203	Front Handle	2
					M12345-33	Mounting Hex Head Screws	8
					M28526	Nut Cap	2
					NTC-3C	Hex Lock Nut, #10-24	8
OPTIONAL ACCESSORIES							
					HA1210	Hang-up Thermostat	
					HA1180	Air Gauge Kit	

** Available at your local hardware store.

*** Not available as an assembly.

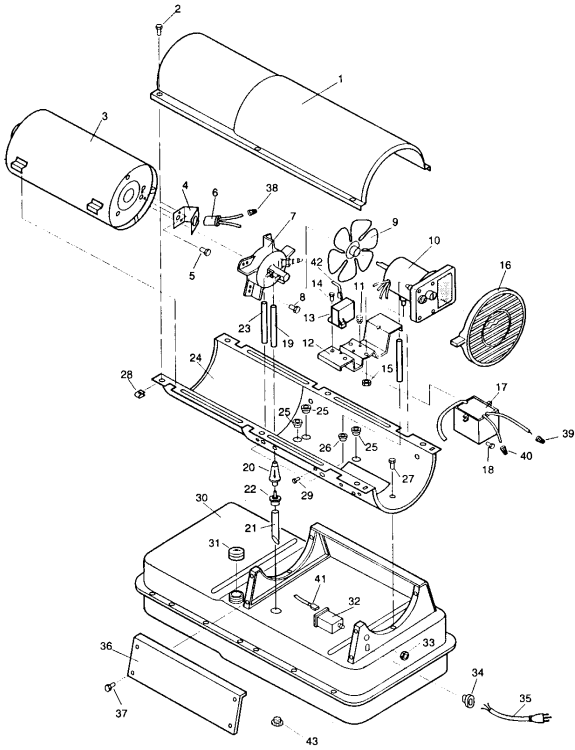
DESA International

2701 Industrial Drive, P.O. Box 90004
Bowling Green, KY 42102-9004
Technical Service Department 1-800-323-5190
Parts Department 1-800-972-7879

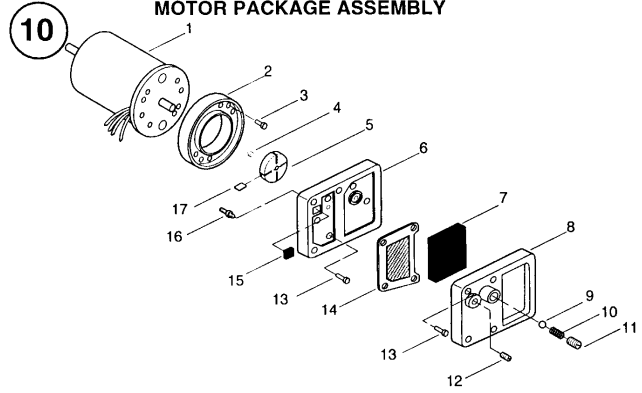
098681-01
REV. B
05/97

B100B

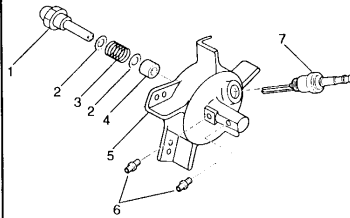
HEATER EXPLODED VIEW



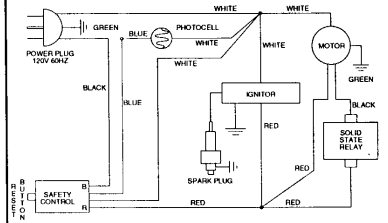
MOTOR PACKAGE ASSEMBLY



BURNER HEAD ASSEMBLY



WIRING DIAGRAM



SPECIFICATIONS

Output Rating (BTU Per Hour)	100,000
Fuel	Kerosene or #1 fuel oil
Fuel Tank Capacity (U. S. Gallons)	9
Fuel Consumption (Approximate U.S. Gallons Per Hour)	0.74
Electric Requirements	120V/60Hz
Amperage (During Normal Run)	5

Motor RPM	3450
Hot Air Output (Approximate CFM)	481
Air Pump Pressure (PSI)	4.0
Shipping Weight (Approximate Pounds)	64
Heater Weight Without Fuel (Approximate Pounds)	55
Duct	No Duct Recommended