

PORTABLE FORCED AIR HEATER  
*Illustrated Parts List*

~~PEA-52~~

Issued: May, 1993

**HOMELITE - HH110**

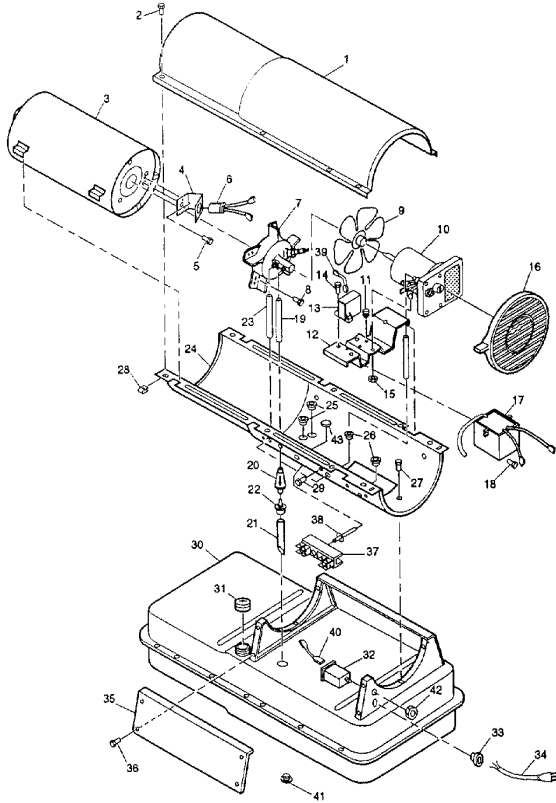
**IMPORTANT:** Do not use key numbers when ordering service parts. Always order components by part number and description. Include model and serial numbers.

KEY NO.	PART NUMBER	DESCRIPTION	QTY.	KEY NO.	PART NUMBER	DESCRIPTION	QTY.
1	098511-30	Upper Shell	1	23	M50814-03	Airline	1
2	M15823-27	Screw, #10-16 x 1/2"	8	24	098511-149	Lower Shell	1
3	098512-31	Combustion Chamber	1	25	M50104-03	Bushing	2
4	M16660	Photocell Bracket	1	26	M50104-01	Bushing	2
5	M10908-2	Screw, #6-32 x 3/8"	2	27	M11084-27	Screw, #10-16 x 1/2"	6
6	HA3019	Photocell Assembly	1	28	M11271-8	Clip Nut	8
7	***	Bumer Head Assembly	1	29	M15823-37	Screw, #8-18 x 1/4"	1
7-1	HA3022	Nozzle with Sleeve	1	30	098513-21	Fuel Tank	1
7-2	M10659-1	Nozzle Washer	2	31	097702-01	Fuel Cap (Includes Gasket)	1
7-3	M10809-1	Nozzle Spring	1	32	HA3003	Flame-out Control	1
7-4	M8882	Nozzle Sleeve	1	33	M11143-1	Strain Relief Bushing	1
7-5	M50924-03	Bumer Head Body	1	34	098219-19	Power Cord	1
7-6	M50820-02	Barb Fitting	2	35	M51077-01AA	Side Cover	1
7-7	HA3012	Spark Plug	1	36	M11084-27	Screw, #10-16 x 1/2"	4
8	M11084-27	Screw, #10-16 x 1/2"	3	37	099125-03	Terminal Board	1
9	097293-01	Fan	1	38	099157-01	Rivet	1
10	***	Motor and Pump Assembly	1	39	079010-20	Wire Assembly (Red, 18")	1
10-1	097300-02	Motor (Split Phase)	1	40	M16841-57	Wire Assembly (Red, 6")	1
10-2	079975-01 <b>M8602</b>	Pump Body	1	41	M27417	Drain Plug (Includes "O" Ring)	1
10-3	FHPF3-3C	Screw, #10-32 x 3/8"	2	42	099177-01	Hex Nut, 3/8 - 27	1
10-4	M22009**	Rotor Insert	1	43	099213-01	Bottom Plug	1
10-5	M22456-1**	Pump Rotor	1	<b>PARTS AVAILABLE - NOT SHOWN</b>			
10-6	M50545	Pump End Cover	1		M12345-29	Screw, #10-24 x 1"	4
10-7	M12179**	Intake Filter	1		097896-01	Wheels	2
10-8	M16545	Filter End Cover	1		M51015-01	Axle	1
10-9	M8940**	Steel Ball, 1/4" diameter	1		M12342-3	Wheel Support Frame	1
10-10	M10993-1**	Relief Spring	1		HA2203	Handle	1
10-11	M27694**	Adjusting Screw	1		M12345-33	Screw, #10-24 x 1 3/4"	4
10-12	M22997**	Plug	1		M28526	Nut cap	2
10-13	M12461-31	Screw, #10-32 x 1"	10		NTC-3C	Hex Lock Nut, #10-24	8
10-14	M12244-1**	Output Filter	1		097886-06	Tradename Decal	
10-15	M11637**	Lint Filter	1		098493-01	General Information Decal	
10-16	M50820-02	Barb Fitting	1		100507-01	Owner's Manual	
10-17	M8643**	Blade	4	<b>OPTIONAL ACCESSORIES</b>			
11	M50631	Rubber Bumper	2		HA1210	Hang-up Thermostat	
12	098138-02	Motor Mounting Bracket	1		HA1180	Air Gauge Kit	
13	097061-01	Solid State Relay	1		HA2210	Fuel Tank Filter Screen	
14	M15823-39	Screw, #8-18 x 1/2"	2		HA3004	Rotor Kit (M22456-1, M22009, M8643)	
15	NTC-4C	Hex Lock Nut, 1/4-20	2		HA3017	Filter Kit (M11637, M12179, M12244-1, M51150-01)	
16	M51114-01	Fan Guard	1		HA3020	Pump Kit (M27694, M10993-1, M22997, M8940)	
17	098557-06	Ignitor Kit	1				
18	M11084-29	Screw, #10-16 x 3/4"	2				
19	M51345-01	Fuel Line	1				
20	M51150-01**	Fuel Filter	1				
21	M51151-01	Fuel Line Tube	1				
22	M10990-3	Rubber Bushing	1				

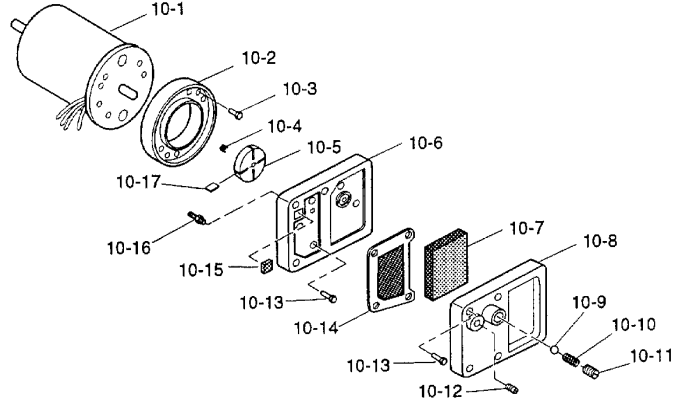
\*\* See OPTIONAL ACCESSORIES

\*\*\* Not available as an assembly.

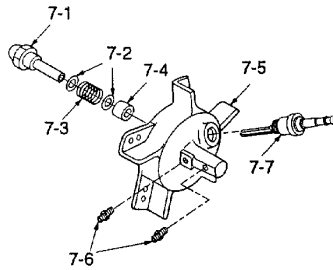
### HEATER EXPLODED VIEW



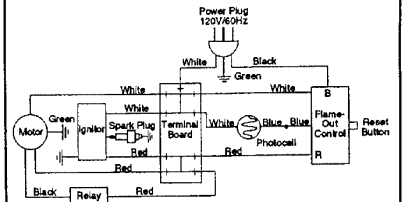
### MOTOR PACKAGE ASSEMBLY



### BURNER HEAD ASSEMBLY



### WIRING DIAGRAM



### SPECIFICATIONS

Output Rating (BTU Per Hour)	110,000
Fuel	Kerosene or #1 fuel oil
Fuel Tank Capacity (U. S. Gallons)	9
Fuel Consumption (Approximate U.S. Gallons Per Hour)	0.83
Electric Requirements	120V/60Hz
Amperage (During Normal Run)	4.5
Starting Amps	10

Motor RPM	3450
Hot Air Output (Approximate CFM)	480
Air Pump Pressure (PSI)	4.5
Shipping Weight (Approximate Pounds)	56
Heater Weight Without Fuel (Approximate Pounds)	47