

# Homelite®

Issued: Nov. 1987

## PORTABLE FORCED AIR HEATER Illustrated Parts List

HH50

**IMPORTANT:** Do not use key numbers when ordering service parts. Always order components by part number and description. Include model and serial numbers.

KEY NO.	PART NUMBER	DESCRIPTION	QTY.	KEY NO.	PART NUMBER	DESCRIPTION	QTY.
1	M51104-01	Handle	1	15	M11143-1	Strain Relief Bushing	1
2	098511-43	Upper Shell	1	16	NTC-4C	Hex Lock Nut, 1/4-20	2
3	M11084-29	Screw, #10-16 x 3/4"	2	17	M11084-26	Screw, #10-16 x 3/8"	2
4	100647-01	Screw, #10-16 x 1/2"	6	18	M50631	Rubber Bumper	2
5	098512-13	Combustion Chamber	1	19	M50899-03AA	Side Cover	1
6	M10908-2	Screw, #6-32 x 3/8"	2	20	101205-01	Motor Bracket	1
7	M16660	Photocell Bracket	1	21	M30865-02	Bushing	1
8	HA3019	Photocell Assembly (5*)	1	22	M25907	Bushing	1
9	***	Burner Head Assembly	1	23	M11271-8	Clip Nut	6
9-1	HA3007	Nozzle (2")	1	24	M50104-02	Bushing	1
9-2	HA3013	Spark Plug (5*)	1	25	M11084-26	Screw, #10-16 x 3/8"	6
9-3	079980-01	Nozzle Adapter	1	26	M15823-37	Screw, #8-18 x 1/4"	1
9-4	097125-01	Bracket	1	27	098511-19	Lower Shell	1
9-5	M29824	Nut, 14mm	1	28	M29652-04	Rubber Airline	1
10	M11084-26	Screw, #10-16 x 3/8"	2	29	102482-01	Ignitor Kit	1
11	M30884	Fan	1	30	M11084-29	Screw, #10-16 x 3/4"	2
12	***	Motor and Pump Assembly	1	31	079973-01	Fuel Line	1
12-1	102001-01	Motor (3")	1	32	M50876-02	Fuel Filter (With Bushing) (2*)	1
12-2	079975-02	Pump Body (3")	1	33	M10990-3	Rubber Bushing	1
12-3	M22009	Insert (10")	1	34	M16841-16	Wire Assembly (Red, 6")	1
12-4	M22456-1	Rotor (8")	1	35	**	Wire Connector (Blue Wires)	1
12-5	M29608	Pump End Cover (5")	1	36	**	Wire Connector (Red Wires)	1
12-6	M29632	Lint Filter (5")	1	37	**	Wire Connector (White Wires)	1
12-7	M29633	Intake Filter (5")	1	38	HA3003	Safety Control (10")	1
12-8	M29609	Filter End Cover (5")	1	39	097702-01	Fuel Cap (Includes Gasket)	1
12-9	M12461-31	Screw, #10-32 x 1"	3	40	098513-20	Fuel Tank	1
12-10	M27694	Adjusting Screw	1	41	M51108-01	Heat-Shell Shield	1
12-11	M10993-1	Pressure Relief Spring	1	<b>PARTS AVAILABLE - NOT SHOWN</b>			
12-12	M22997	Plug	1		097886-02	Tradename Decal	
12-13	M8940	Steel Ball, 1/4" diameter	1	<b>OPTIONAL ACCESSORIES</b>			
12-14	M29612-01	Output Filter (5")	1		HA1210	Hang-up Thermostat	
12-15	M12461-31	Screw, #10-32 x 1"	6		HA1202	Heavy Duty Wheels and Handle Kit	
12-16	M50016	Elbow, 90°	1		HA1206	Standard Wheels and Handle Kit	
12-17	M8643	Blade (20")	4		HA1180	Air Gauge Kit	
12-18	FHPF3-2C	Screw, #10-32 x 1/4"	2				
13	M51105-01	Fan Guard	1				
14	098219-18	Power Cord	1				

\* Recommended stock order per 100 heaters sold.

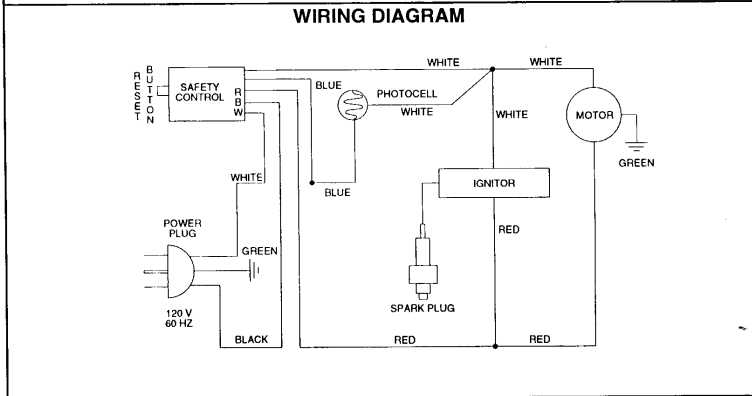
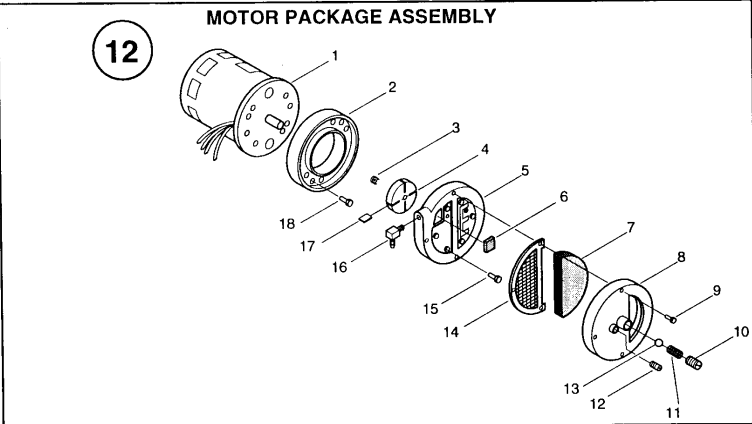
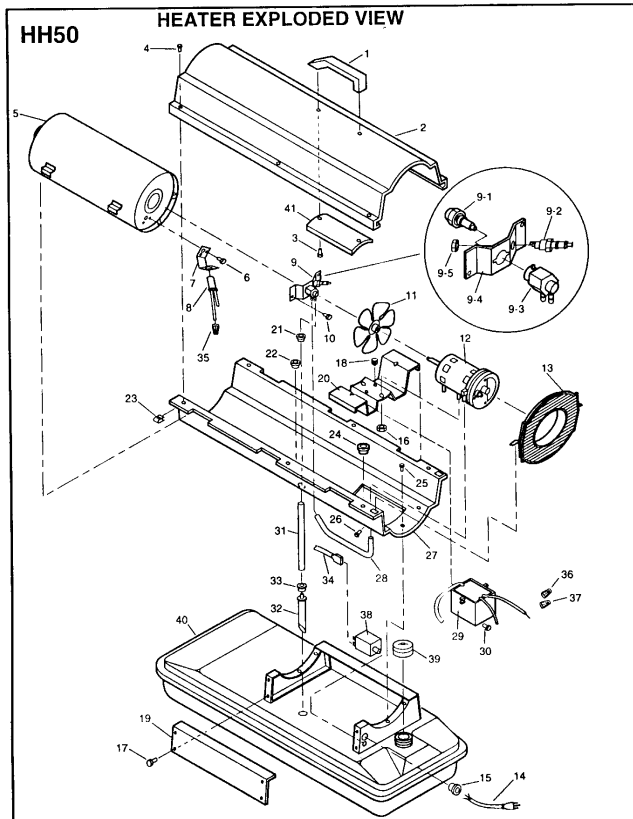
\*\* Available at your local hardware store.

\*\*\* Not available as an assembly.

### DESA International

2701 Industrial Drive, P.O. Box 90004  
Bowling Green, KY 42102-9004  
Technical Service Department 1-800-323-5190  
Parts Department 1-800-972-7879

098123-01  
REV. C  
10/96



**SPECIFICATIONS**

Output Rating (BTU Per Hour)	50,000	Motor RPM	1725
Fuel	Kerosene or #1 fuel oil	Hot Air Output (Approximate CFM)	166
Fuel Tank Capacity ( U. S. Gallons)	4	Air Pump Pressure (PSI)	3.6
Fuel Consumption ( Approximate U.S. Gallons Per Hour)	0.37	Shipping Weight (Approximate Pounds)	43
Electric Requirements	120V/60Hz	Heater Weight Without Fuel (Approximate Pounds)	36
Amperage (During Normal Run)	2.5		