

**PORTABLE FORCED AIR
HEATER**
Illustrated Parts List

**CO-OP
HEATER**

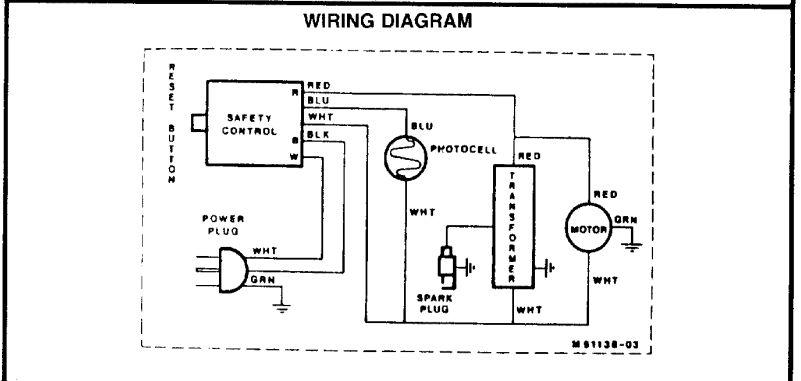
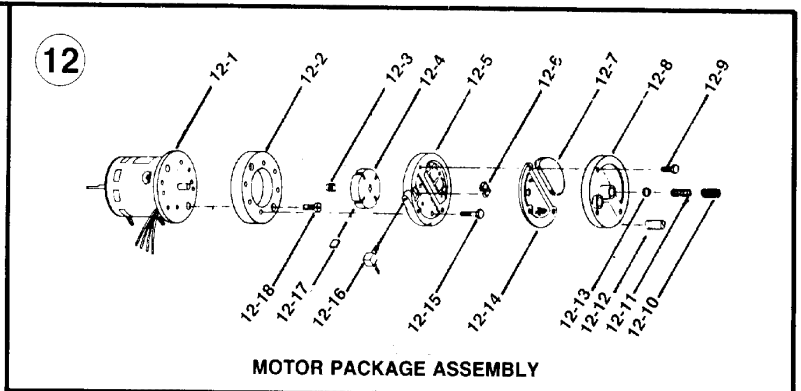
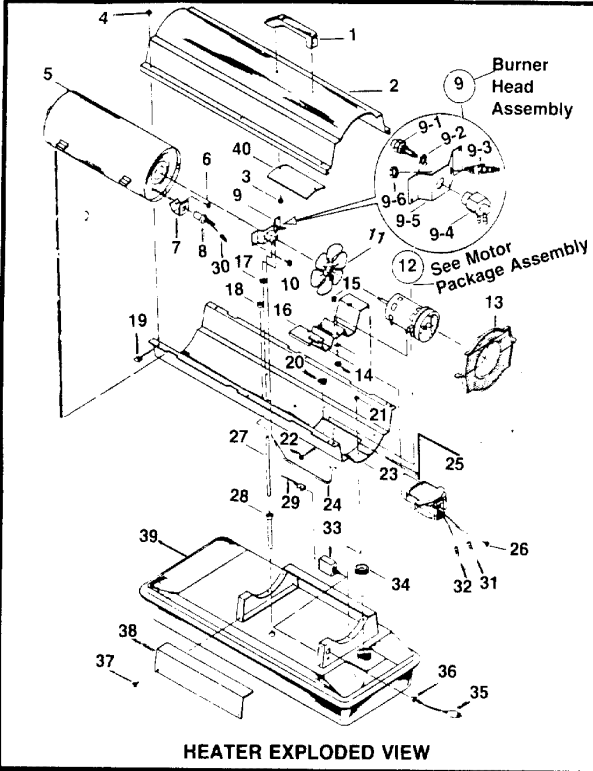
C30C & C50C

IMPORTANT DO NOT USE KEY NUMBERS WHEN ORDERING SERVICE PARTS. ALWAYS ORDER COMPONENTS BY PART NUMBER AND DESCRIPTION. INCLUDE MODEL AND SERIAL NUMBERS

KEY NO.	PART NO.	PART DESCRIPTION	C30C QTY.	C50C QTY.	KEY NO.	PARTS NO.	PART DESCRIPTION	C30C QTY.	C50C QTY.
1	M51104-01	Handle	1	1	13	M51105-01	Guard Fan	1	1
2	079445-01B	Shell, Upper	1	1	14	NTC-4C	Nut-Hex Jam	2	2
3	M50589-01	Screw, Handle <i>098511-70</i> <i>M11084-29</i>	2	2	15	M50631	Bumper, Rubber	2	2
4	M11084-27	Screw, #10-16X ^{1/2}	6	6	16	M51084-01	Bracket, Motor <i>098138-01</i>	1	1
5	M50785-02	Combustion Chamber <i>098512-14</i>	1	1	17	M30865-02	Bushing	1	1
	M50785-04	Combustion Chamber <i>098512-13</i>	1	1	18	M25907	Bushing Photo Cell	1	1
6	M10908-2	Screw, #6-32X3/8	2	2	19	M11271-8	Nut-Tinnerman	6	6
7	M16660	Bracket, Photo Cell	1	1	20	M50104-02	Bushing Wires	1	1
8	M16656-4	Photo Cell Assembly <i>HA3019</i>	1	1	21	M11084-26	Screw, #10-12X3/8	6	6
9		Burner Head Assembly	1	1	22	M15823-37	Screw, #8X ^{1/4}	1	1
		(See Back)			23	079446-01B	Shell, Lower <i>098511-91</i>	1	1
9-1	M29681	Nozzle	1	1	24	M29652-04	Airline Rubber	1	1
	M50587	Nozzle <i>HA3007</i>	1	1	25	M50570-03	Transformer, 5000 Volt <i>098557-03</i>	1	1
9-2	M16741-18	Ring, Retainer	1	1	26	M11084-26	Screw, #10-12X3/8	2	2
9-3	M29835-2	Spark Plug <i>HA3013</i>	1	1	27	M29652-05	Fuel Line	1	1
9-4	M29805	Adapter, Nozzle <i>097213-01</i>	1	1	28	M50876-04	Fuel Filter	1	1
9-5	M51013-01	Bracket <i>097124-01</i>	1	1		M50876-02	Fuel Filter		1
	M29616-04	Bracket <i>097125-01</i>	1	1	29	M9900-157	Wire, Red <i>M16841-16</i>	1	1
9-6	M29824	Nut, 14mm	1	1	30	M13942-7	Wire, Nut (Small)	1	1
10	M11084-27	Screw, #10-16X ^{1/2}	2	2	31	M13942-5	Wire, Nut (Medium)	1	1
11	M30884	Fan 7" dia. -1.437	1	1	32	M13942-6	Wire, Nut (Large)	1	1
12	29750-05e	Motor Package Assembly	1	1	33	M50671-01	Control, Flame Out <i>HA3003</i>	1	1
		(See Back)			34	M51027-06	Cap. Fuel (Includes Gasket)	1	1
	M29750-04e	Motor Package Assembly	1	1	35	M10813-81	Cord, Power	1	1
		(See Back)			36	M11143-1	Bushing, Strain-Relief	1	1
12-1	M50843-01	Motor <i>102001-01</i>	1	1	37	M11084-26	Screw, #10-12X3/8	2	2
	M50843-02	Motor <i>079915-02</i>	1	1	38	M50899-03AA	Cover, Side	1	1
12-2	M8645	Pump Body	1	1	39	M50811-04AA	Tank, Fuel <i>098513-23</i>	1	1
12-3	M22009	Insert, Rotor	1	1		M50811-05AA	Tank, Fuel <i>098513-20</i>	1	1
12-4	M22456-1	Rotor	1	1	40	M51108-01	Shield, Heat	1	1
12-5	M29608	Cover, End Pump	1	1	PARTS AVAILABLE - NOT SHOWN				
12-6	M29632	Filter, Lint	1	1		079449-01	Decal, Nameplate		
12-7	M29633	Filter, Intake	1	1		M51110-01	Decal, Warning <i>delete</i>		
12-8	M29609	Filter, End Cover	1	1		079443-01	Decal, Tradename		
12-9	M12461-31	Screw, #10-32X1	3	3	OPTIONAL ACCESSORIES				
12-10	M27694	Screw, Adjusting	1	1		HA1200	Hang-Up Thermostat <i>HA1210</i>		
12-11	M10993-1	Spring-Relief	1	1		HA1206	Wheel Kit <i>+ Handle Kit</i>		
12-12	M22997	Plug	1	1	<i>HA1202 Heavy Duty wheel + Handle Kit</i>				
12-13	M8940	Ball, Steel 1/4 Dia.	1	1					
12-14	M29612-01	Filter, Output	1	1					
12-15	M12461-31	Screw, #10-32X1	6	6					
12-16	M50016	Elbow 90°	1	1					
12-17	M8643	Blade	4	4					
12-18	FHPF3-4C	Screw, #10-32X ^{1/2}	2	2					

Rev. A
dat

MODELS C30C & C50C



SPECIFICATIONS

	R30	R50		R30	R50
OUTPUT Rating (BTU Per Hour)	30,000	50,000	Motor RPM	1710	1730
Fuel	kerosene or #1 fuel oil		Air Output (CFM)	123	106
Fuel Tank Capacity, U.S. Gallons	3.00	4.00	Air Pump Pressure	3.00	3.60
Fuel Consumption, Approx. U.S. Gal. Per Hour	0.23	0.17	Shipping Weight (Approx. Lbs.)	42	43
Electric Requirements	120 60Hz		Without Fuel (Approx. Lbs.)	35	36
Amperage (During Normal Run)	2.78	2.90	Duct	No Duct Recommended	
Starting Amps	4.00	4.00			