

## PORTABLE FORCED AIR HEATER

### Illustrated Parts List

DESA  
C100D

**IMPORTANT** DO NOT USE KEY NUMBERS WHEN ORDERING SERVICE PARTS. ALWAYS ORDER COMPONENTS BY PART NUMBER AND DESCRIPTION. INCLUDE MODEL AND SERIAL NUMBERS.

KEY NO.	PART NO.	PART DESCRIPTION	QTY.
1	<del>079459-01B</del>	Upper Shell <i>098511-47</i>	1
2	M15823-27	Screw (10-16 x 1/2)	1
3	<del>M51075-01</del>	Combustion Chamber Assembly <i>098512-01</i>	1
4	M16660	Bracket, Photocell	1
5	M10908-2	Screw (6-32 x 3/8)	2
6	<i>See Note</i>	Photocell Assembly <i>HA3019</i>	1
7		Burner Head Assembly	1
7-1	<del>M51120-01</del>	Nozzle <i>HA3009 (incl sleeve)</i>	1
7-2	M10659-1	Washer, Nozzle	2
7-3	M10809-1	Spring, Nozzle	1
7-4	M8882	Sleeve, Nozzle	1
7-5	M50924-03	Body, Burner Head	1
7-6	M50820-02	Fitting, Barb	2
7-7	<del>M40962-2</del>	Spark Plug <i>HA3012</i>	1
8	M11084-27	Screw (10-16 x 3/8)	3
9	M51153-01	Fan	1
10		Motor and Pump Assembly	1
10-1	<del>M61131-01</del>	Motor (Split Single Phase) <i>097300-02</i>	1
10-2	<i>See Note</i>	Pump Body <i>079975-02</i>	1
10-3	FHPF34C	Screw (10-32 x 1/2)	2
10-4	M22009	Insert, Rotor	1
10-5	M22456-1	Rotor, Pump	1
10-6	M50545	Cover, Pump End	1
10-7	M12179	Filter, Intake	1
10-8	M16545	Cover, End Filter	1
10-9	M8940	Ball, Steel 1/4 Dia.	1
10-10	M10993-1	Spring, Relief	1
10-11	M27694	Screw, Adjusting	1
10-12	M22997	Plug	1
10-13	M12461-31	Screw (10-32 x 1)	10
10-14	M12244-1	Filter, Output	1
10-15	M11637	Filter, Lint	1
10-16	M50820-02	Fitting, Barb	1
10-17	M8643	Blade	4
11	M50631	Rubber Bumper	2
12	M51074-01	Motor Mounting Bracket	1
13	M11084-27	Screw (10-16 x 3/8)	2
14	NTC-4C	Hex Lock Nut	2

KEY NO.	PART NO.	DESCRIPTION	QTY.
15	M51114-01	Fan Guard	1
16	<del>M10697-02</del>	Transformer <i>098557-06</i>	1
17	M11084-27	Screw (10-16 x 1/2)	2
18	M51345-01	Fuel Line, Upper	1
19	M51150-01	Fuel Filter	1
20	M51151-01	Fuel Line Tube, Lower	1
21	M10990-3	Rubber Bushing	1
22	M50814-06	Airline	1
23	<del>079459-01B</del>	Lower Shell <i>098511-47</i>	1
24	M30865-02	Bushing	1
25	M30865-02	Bushing	1
26	M30865-02	Bushing	1
27	M50104-02	Bushing	1
28	M11084-26	Screw (12-14 x 1/2)	6
29	M11271-8	Clip Nut	6
30	M15823-37	Screw (Grounding, 8-18 x 1/4)	1
31	<del>M51115-01AA</del>	Fuel Tank <i>098513-32</i>	1
32	<i>See Note</i>	Cap, Fuel (Includes gasket)	1
33	M51122-01	Support PCB	1
34	<i>See Note</i>	Control, Flame Out PCB	1
35	M51157-01	Nut Hex 12mm	1
36	M11143-1	Bushing, Strain Relief	1
37	M10813-84	Cord, Power	1
38	M51077-01AA	Cover, Side	1

PARTS AVAILABLE - NOT SHOWN

079866-01	Decal, Tradename		
<del>M19294</del>	Wheels <i>097896-01</i>	2	
M51015-01	Axle	1	
M12342-3	Frame Support Wheel	1	
HA2203	Handle	1	
M12345-33	Mounting Screws-Wheel Support	8	
M28526	Nut Cap	2	
NTC-3C	Nut, Hex Lock 10-24	8	

OPTIONAL ACCESSORIES

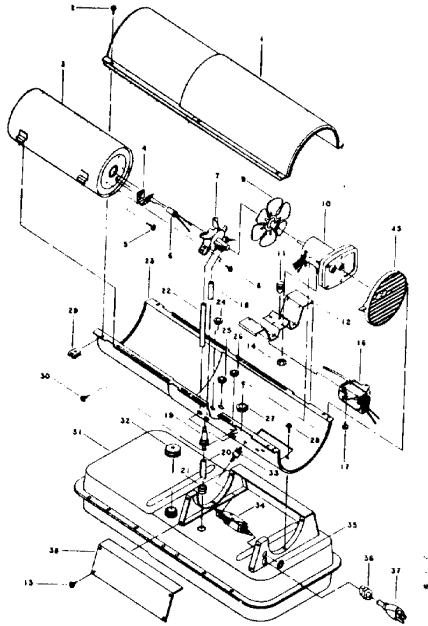
HA1290 1210	Thermostat		
-------------	------------	--	--

NOTE: These part changes for 1986 models

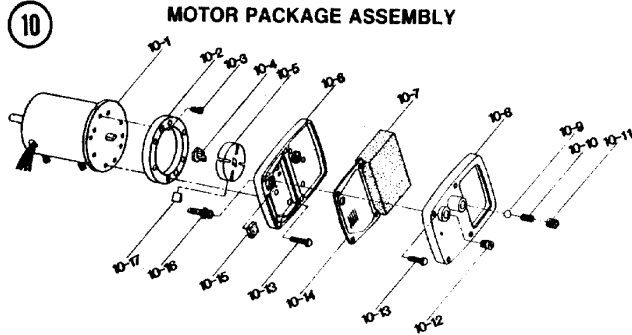
KEY NO	OLD PART NUMBER	NEW PART NUMBER	DESC.
<del>6</del>	<del>M16656-10</del>	M16656-4	Photocell
<del>10/2</del>	<del>M8645</del>	079975-01	Pump body
32	M51027-06	097048-01	Fuel Cap
34	<del>M50671-02</del>	M50671-01	Safety control
	<del>098529-01</del>		

Rev. A  
dat

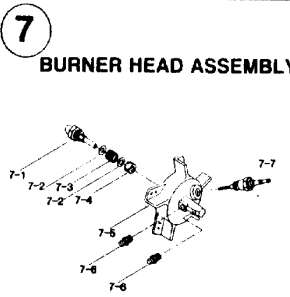
MODEL C100D



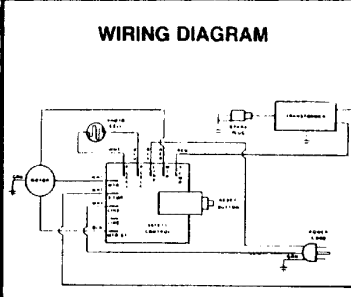
HEATER EXPLODED VIEW



MOTOR PACKAGE ASSEMBLY



BURNER HEAD ASSEMBLY



WIRING DIAGRAM

**SPECIFICATIONS**

	C100D		C100D
OUTPUT Rating (BTU Per Hour)	100,000	Motor RPM	3450
Fuel	kerosene or #1 fuel oil	Air Output (CFM)	273
Fuel Tank Capacity, U.S. Gallons	9.00	Air Pump Pressure	4.00
Fuel Consumption, Approx. U.S. Gal. Per Hour	0.74	Shipping Weight (Approx. Lbs.)	64.00
Electric Requirements	120 60Hz.	Without Fuel (Approx. Lbs.)	55.00
Amperage (During Normal Run)	5.5	Duct	No Duct Recommended
Starting Amps	10.0		