

CO-OP MODEL: CV60S

Spec. No. 3201609

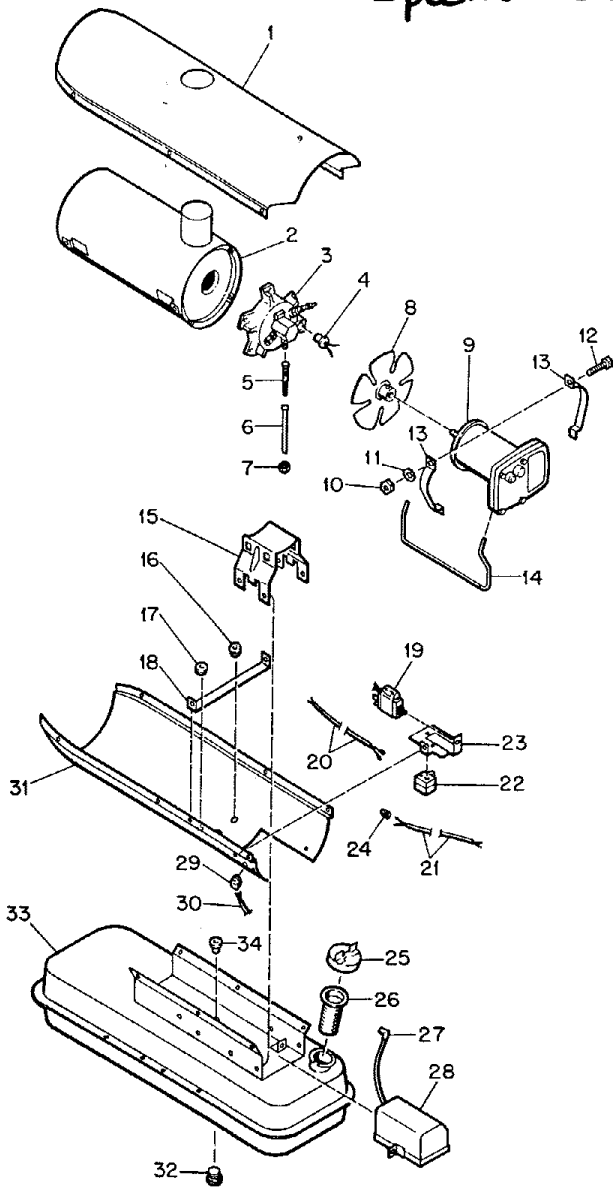
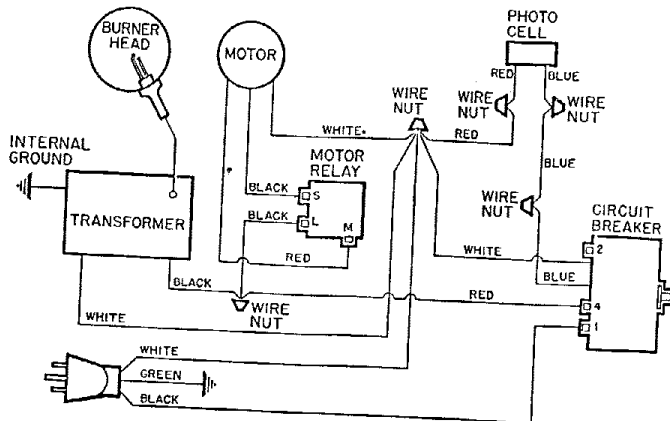


Fig. 13

| Index No. | Part Number | Part Name | Qty. |
|-----------|-------------|--|------|
| 1 | M26589F | Shell, Upper | 1 |
| | M11084-26 | Screw, Hex hd., 10-12 x 3/8 in. (AP) | 6 |
| | M11271-6 | Nut, Timberman (AP) | 6 |
| 2 | M26548-1 | Combustion Chamber Assy | 1 |
| | M11084-26 | Screw, Hex hd., 10-12 x 3/8 in. (AP) | 4 |
| 3 | M27367-4 | Burner Body Assembly (See fig. 14 for details) | 1 |
| | M11084-26 | Screw, Hex hd., 10-12 x 3/8 in. (AP) | 3 |
| 4 | M16656-3 | Photo Cell and Bushing Assembly | 1 |
| 5 | M19630 | Filter Element | 1 |
| 6 | M16790-14 | Tube, Filter | 1 |
| 7 | M13849 | Nut, Flared | 1 |
| 8 | M28730 | Fan | 1 |
| | SF4-2-1/2K | Setscrew, Socket hd., cup pt. 1/4-28 x 5/16 | 2 |
| 9 | M25023-1 | Motor Package Assembly (See fig. 15 for details) | 1 |
| 10 | NPC-4C | Nut, Plain, Hex, 1/4-20 (AP) | 2 |
| 11 | WLM-4 | Lockwasher, 1/4 in. (AP) | 2 |
| 12 | HC4-10C | Screw, Hex hd., 1/4-20 x 1-1/4 in. (AP) | 2 |
| 13 | M16661 | Clamp, Motor | 4 |
| 14 | M25021 | Air Line | 1 |
| 15 | M25059 | Bracket, Support | 1 |
| | M11084-27 | Screw, Hex hd., 10-12 x 1/2 in. (AP) | 4 |
| 16 | 1000576 | Grommet | 3 |
| 17 | 1000577 | Grommet | 1 |
| 18 | M25645-2 | Strap, Retainer | 1 |
| | M11084-26 | Screw, Hex hd., 10-12 x 3/8 in. (AP) | 2 |
| 19 | M24982-5 | Safety Control Assembly | 1 |
| 20 | M16841-16 | Wire Assembly | 1 |
| 21 | M16841-15 | Wire Assembly | 1 |
| 22 | M25061-1 | Relay, Motor Start | 1 |
| | RC2-2.5C | Screw, Rd hd., 8-32 x 5/16 in. (AP) | 1 |
| | WLI-2 | Lockwasher, No. 8 | 1 |
| 23 | M25035 | Bracket, Motor start relay | 1 |
| | M11084-26 | Screw, Hex hd., 10-12 x 3/8 in. (AP) | 2 |
| 24 | M13942-2 | Connector, Wire | 2 |
| 25 | M23284 | Cap, Filler Neck | 1 |
| 26 | M18053 | Screen, Filler Neck | 1 |
| 27 | M16748 | Terminal, Ignition | 1 |
| 28 | *M16697 | Transformer, 5000 volt | 1 |
| | M11084-27 | Screw, Hex hd., 10-12 x 1/2 in. | 2 |
| 29 | M11143-1 | Bushing, Strain relief | 1 |
| 30 | M10813-38 | Extension Cord Assy | 1 |
| 31 | M26208-2H | Shell Assembly, Lower | 1 |
| 32 | M27417 | Plug, Drain | 1 |
| 33 | M27553-04E | Fuel Tank Assembly | 1 |
| 34 | M10990-3 | Bushing | 1 |

* 9-inch lead length measured over



Wiring Diagram

Fig. 16

| Index No. | Part Number | Part Name | Qty. |
|-----------|-------------|------------------------------------|------|
| 1 | M26287-3 | Handle, Front and Rear | 2 |
| 2 | M26205-3 | Frame, Wheel Support | 1 |
| 3 | M12345-33* | Screw, Oval hd., 10-24 x 1-3/4 in. | 8 |
| 4 | NTC-3C* | Nut, Torque Lock No. 10-24 | 8 |
| 5 | M28526 | Nut, Cap | 2 |
| 6 | WP-8C* | Washer, Flat 1/2 inch | 2 |
| 7 | M26307 | Wheel | 2 |
| 8 | M16801-6 | Axle | 1 |

DECALS

| | | |
|----------|------------------|---|
| M24529 | Decal, Tradename | 1 |
| M28601-7 | Decal, Model | 1 |
| M22743 | Decal, Warning | 1 |
| M22898 | Decal, N.P. | 1 |
| M25352 | Decal, Wiring | 1 |
| M25325 | Decal, Reset | 1 |

TOUCH-UP PAINT

| | | |
|----------|---------------------------------|--|
| M23353-3 | Paint, Medium Gray, Aerosol Can | |
|----------|---------------------------------|--|

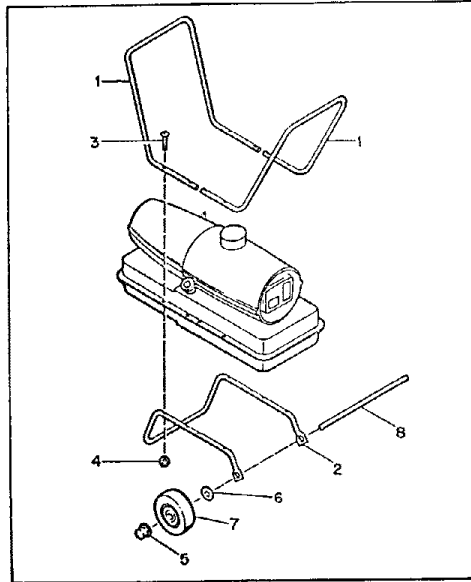


Figure 16. Handles and Wheels

CO-OP MODEL:
CV60S

Spec. No. 3201609

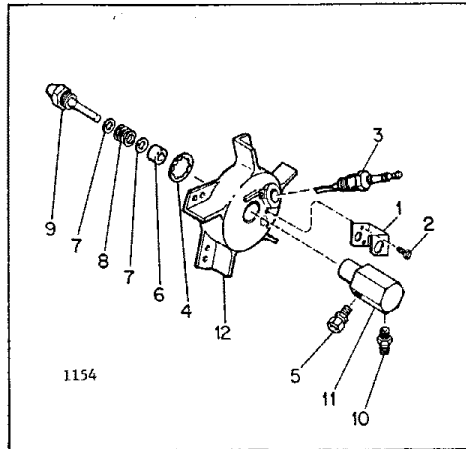
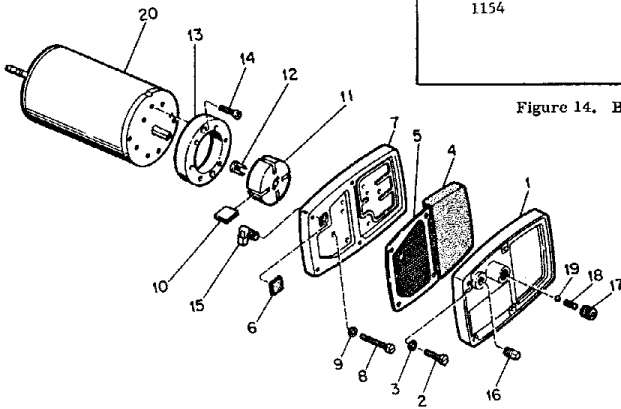


Figure 14. Burner Head Assembly

Fig. 14

| Index No. | Part Number | Part Name | Qty. |
|-----------|-------------|---|------|
| 14- | M27367-4 | Burner Head Assembly | Ref. |
| 1 | M16660 | . Bracket, Photo Cell | 1 |
| 2 | *M10908-1 | . Screw, Hex hd., Self-tapping, No. 6-32 x 1/4 (AP) | 2 |
| 3 | M10962-2 | . Spark plug | 1 |
| 4 | M16741-18 | . Ring, Retaining | 1 |
| | M23151-4 | . Nozzle Adapter Assembly | 1 |
| 5 | M5376 | . Connector, Male | 1 |
| 6 | M8882 | . Sleeve, Nozzle Seal | 1 |
| 7 | M10659-1 | . Washer, Nozzle Seal | 2 |
| 8 | M10809-1 | . Spring, Nozzle Seal | 1 |
| 9 | M26316 | . Nozzle, Aspirating | 1 |
| 10 | M16791 | . Connector, Male | 1 |
| 11 | M16535 | . Adapter, Nozzle | 1 |
| 12 | M25020 | . Body, Burner Head | 1 |



| Index No. | Part Number | Part Name | Qty. |
|-----------|-------------|--|------|
| 15- | M25023-1 | Motor Package Assembly (See figure 13) | Ref. |
| 1 | M16545 | . End Cover, Filter | 1 |
| 2 | *M12461-31 | . Screw, Hex hd., No. 10-32 x 1 (AP) | 4 |
| 3 | *WLI-3 | . Lockwasher, Internal No. 10 (AP) | 4 |
| 4 | M12179 | . Intake Air Filter | 1 |
| 5 | M12244-1 | . Output Filter Assy | 1 |
| 6 | M11637 | . Filter, Lint | 1 |
| 7 | M12233 | . Front Cover, Pump (Port plate) | 1 |
| 8 | *M12461-32 | . Screw, Hex hd., No. 10-32 x 1-1/8 (AP) | 6 |
| 9 | WLI-3 | . Lockwasher, Internal No. 10 (AP) | 6 |

| Index No. | Part Number | Part Name | Qty. |
|-----------|-------------|---|------|
| 10 | M8643 | . Blade, Pump | 4 |
| 11 | M22456-1 | . Rotor, Pump | 1 |
| 12 | M22009 | . Insert, Rotor | 1 |
| 13 | M8645 | . Pump Body | 1 |
| 14 | *FHFF3-4C | . Screw (Pump body to motor) | 2 |
| 15 | 69248 | . Elbow, 90° | 1 |
| 16 | M22997 | . Plug | 1 |
| 17 | M23105 | . Screw, Pressure Adjustment | 1 |
| 18 | M10993-1 | . Spring, Compression (Pressure Relief) | 1 |
| 19 | M8940 | . Ball, 1/4 in. dia. | 1 |
| 20 | M25022-1 | . Motor | 1 |

AP Indicates attaching parts.

* Standard hardware. Purchase locally.