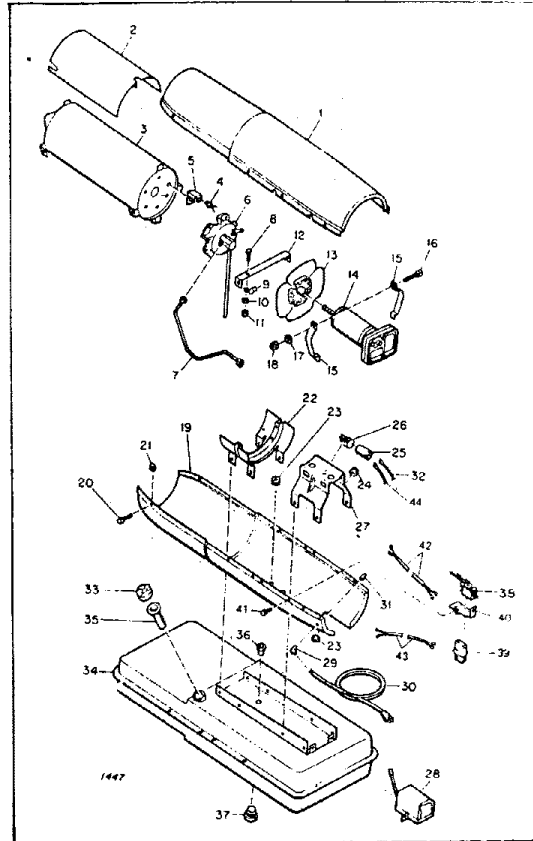


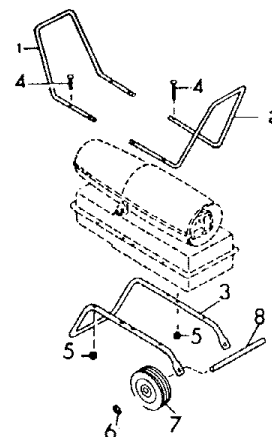
Index No.	Part Number	Part Name or Description	Qty
1	M17015-1AZ	Shell Assy, Upper	1
2	M16679	Deflector, Heat	1
3	M16887-6	Combustion Chamber	1
	M11084-27	Screw (Combustion Chamber attaching, front)	4
4	M16656-3	Cell and Bushing Assy	1
5	M16660	Bracket, Photo Cell	1
	M10908-1	Screw	2
6	M16803-4	Burner Head Assy	1
	M11084-27	Screw (Burner Head to Combustion Chamber)	3
7	M16804	Air Line	1
8	M12461-27	Screw (Air line retaining)	1
9	M24717	Clamp (Air line)	1
10	WLM-3	Lockwasher No. 10	1
11	NPF-3C	Nut, Plain No. 10-32	1
12	M16871	Strap, Retainer	1
	M11084-27	Screw (Retainer Strap to Lower Shell)	2
13	M17058	Fan, 16° Pitch	1
	SF4-2-1/2K	Setscrew, Soc. hd., cup pt., 1/4-28 (Fan to Motor Shaft)	2
14	M17875-9	Motor Package Assy.	1
15	M16661	Clamp, Motor	4
16	HC4-10C	Screw (Motor Clamps)	2
17	WLM-4	Lockwasher, 1/4 in. (Motor Clamps)	2
18	NPC-4C	Nut, Hex, 1/4-20 (Motor Clamps)	2
19	M16810AZ	Shell, Lower	1
20	M11084-27	Screw (Upper Shell to Lower Shell)	8
21	M11271-6	Nut, Tinnerman (Upper Shell to Lower Shell)	8
22	M12828	Bracket, Shell Support	1
	M11084-27	Screw (Support Bracket to Lower Shell and Fuel Tank)	4
23	1000576	Grommet (Cables and Leads thru Lower Shell)	2
24	1000577	Grommet (Leads to Motor and Capacitor)	2
25	M12650-1	Capacitor	1
26	M12651-1	Clamp; Tinnerman (Capacitor Mounting)	1
	M11084-27	Screw (Capacitor Clamp to Motor Support Bracket)	1
27	M16645	Bracket, Motor Support	1
	M11084-27	Screw (Motor Support Bracket to Lower Shell and Fuel Tank)	4
	M15823-26	Screw (Service Cord grounding to Motor Support Bracket)	1
28	M16697-02	Transformer, 5000-Volt	1
	M11084-27	Screw (Transformer to Motor Support Bracket)	2
29	M11143-1	Bushing, Strain Relief (Service Cord to Lower Shell)	1
30	M10813-74	Service (Extension) Cord	1



HEATER GENERAL ASSEMBLY, EXPLODED VIEW

31	M13942-7	Connector (Wire Nut)	3
	M13942-5	Connector (Wire Nut)	2
32	M9900-77	Wire Assy. (to capacitor)	1
33	M23284	Cap. Fuel Tank	1
34	M27547-01A	Fuel Tank	1
35	M18053	Screen, Filler Neck	1
36	M10990-3	Bushing, Rubber (Fuel Filter into Fuel Tank)	1
37	M27417	Plug, Drain	1
38	M28898-03	Safety Control Assembly	1
39	M12462-6	Relay, Starting	1
	RC2-2C	Screw (Relay to Relay Bracket)	2
	WLM-3	Lockwasher	1
40	M25296-1	Bracket, Safety Control	1
41	M11084-27	Screw	1
42	M16615-1	Wiring Harness Assembly	1
43	M9900-80	Wire Assembly, Safety Control	1
44	M9900-62	Wire Assembly	1

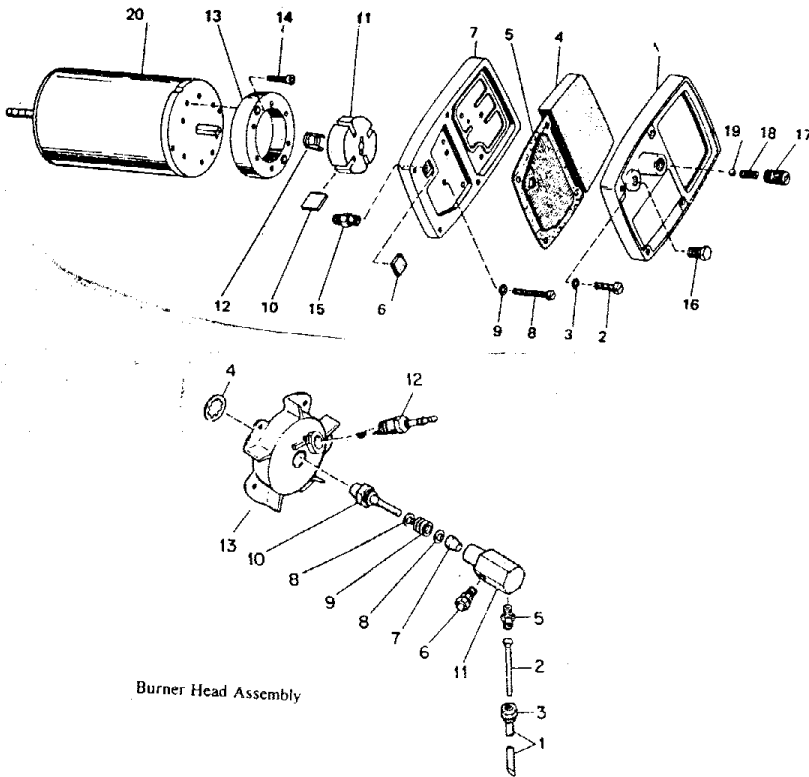
Index No.	Part Number	Part Name or Description	Qty.
1	M15813-3	Handle, Front	1
2	M15813-3	Handle, Rear	1
3	M12831-3	Frame, Wheel Support	1
4	M12345-33*	Screw, Oval hd., 10-24 x 1-3/4 in.	8
5	NTC-3C*	Nut, Torque, Lock No. 10-24	8
6	M28526	Nut, Cap	2
7	M19294	Wheel	2
8	M16801-2A	Axle	1
DECALS			
	M24529	Decal, Tradename	1
	M18196	Decal, Mfg. by	1
	M27311-13	Decal, Model	1
	M22743	Decal, Warning	1
	M22898	Decal, N. P.	1
	M27234	Decal, Wiring	1
	M25325	Decal, Reset	1



# CG-OP MODEL: C150S

SPEC. NO. 3199G14

Figure 3. Motor Package Assembly



Index Part No.	Part Name or Description	Qty.
M17875-9	Motor Package Assembly	1
M16675G2	Pump and Filter Parts Package	1
1	M16545 End Cover, Filter	1
2	M12461-31 Screw (Filter End Cover to Pump End Cover)	4
3	WLI-3 Lockwasher, Internal No. 10	4
4	M12179 Intake Air Filter	1
5	M12244-1 Output Filter Assy.	1
6	M11637 Filter, Lint	1
7	M12233 End Cover, Pump (Port Plate)	1
8	M12461-34 Screw (End Cover to Motor)	6
9	WLI-3 Lockwasher, Internal No. 10	6
10	M8643-3 Blade	4
11	M22456-3 Rotor	1
12	M22009 Insert	1
13	M8645-3 Pump Body	1
14	FHPF3-7C Screw (Pump Body to Motor)	2
15	M5976 Connector, Male	1
16	M22997 Plug	1
17	M27694 Screw, Pressure Adjustment	1
18	M10993-1 Spring, Compression (Pressure Relief)	1
19	M8940 Ball, 1/4 in. dia.	1
20	M17814-6 Motor	1
	M16675-2 Kit, Pump and Filter	1

Index Part No.	Part Name or Description	Qty.
M16803-4	Burner Head Assembly	Ref.
1	M16790-12 Filter Tube	1
2	M19630 Filter, Fuel	1
3	M13849 Nut, Flare	1
4	M16741-18 Ring, Retaining	1
	M16787-3 Nozzle Adapter Assy.	1
5	M16791 Connector, Male	1
6	M5976 Connector, Male	1
7	M8882 Sleeve, Nozzle Seal	1
8	M10659-1 Washer, Nozzle Seal	2
9	M10809-1 Spring, Nozzle Seal	1
10	M18022 Nozzle, Aspirating, 1.0 gph	1
11	M16535 Adapter, Nozzle	1
12	M10962-2 Spark Plug	1
13	M23090 Body, Burner	1

## SPECIFICATIONS

Output Rating (BTU per Hour)	150,000
Average (During normal run)	5.0
Air Pump Pressure (PSI)	5
Weight (Approx. Lbs.)	90.5
Shipping (Dry (net))	76
Fuel Tank Capacity, U.S. Gallons	13.5
Fuel Consumption, Approx. U.S. Gallons per hour	1.0
Electrical Requirements	
Voltage	115
Cycles	60
Relay	115
Motor RPM	3450
Fuel	Kerosene or No. 1 Fuel Oil Only
Duct	No Duct Recommended

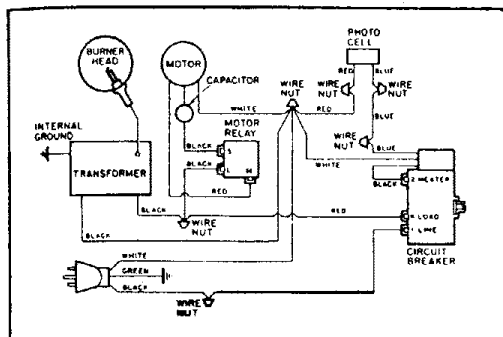


Figure 5. Wiring Diagram