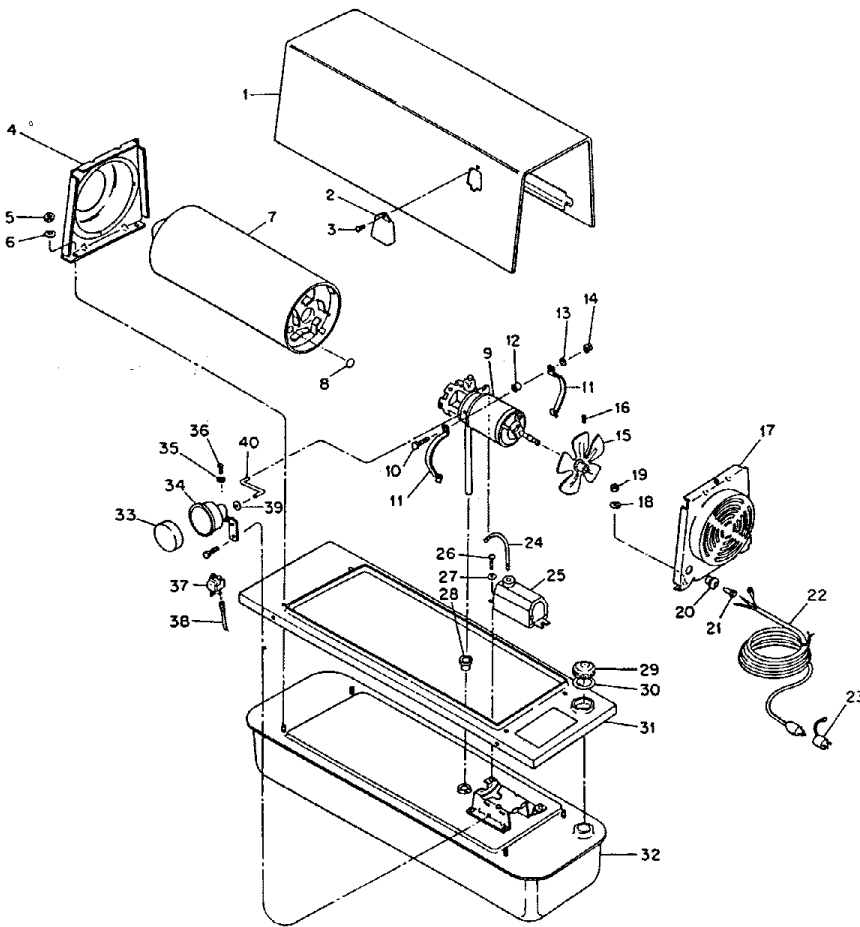


CO-OP 50

Specs: 2810G23-1
2992G23
2992G23-1

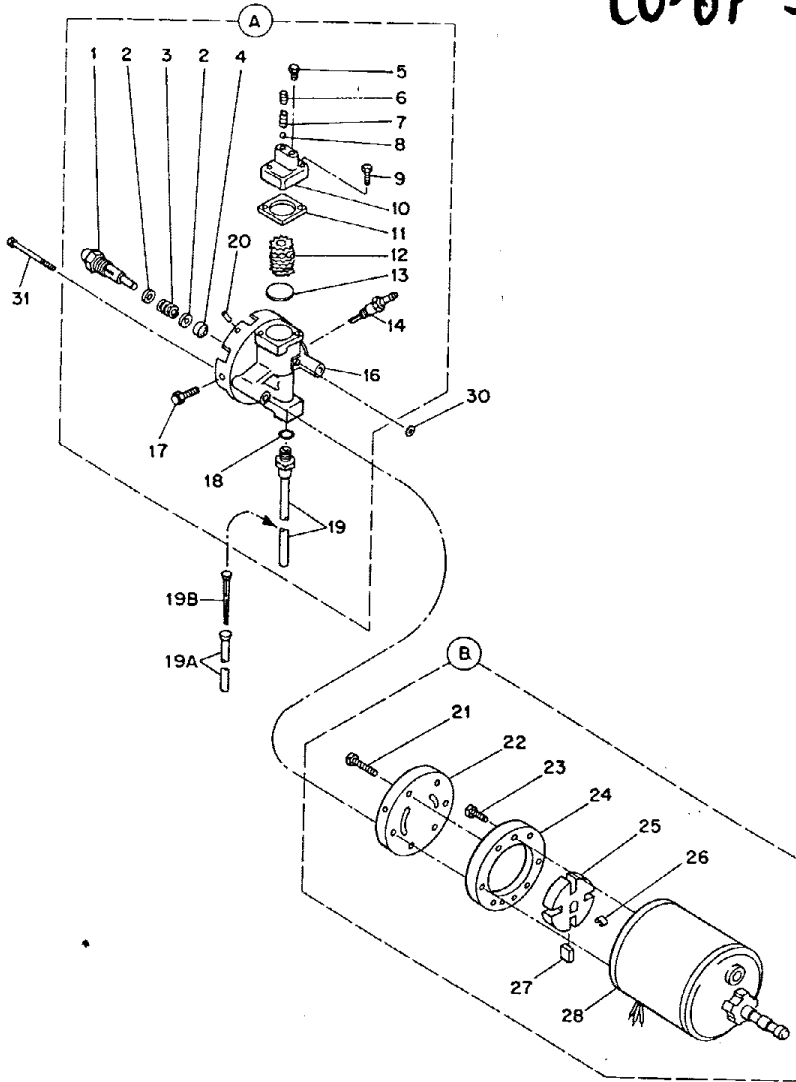


Index No.	Part Number	Part Name or Description	2810G23-1	2992G23	2992G23-1	Quan.	Spec. No
1	M12436G1	Housing, Heater	1	-	1		
1	M17768G1	Housing and Handle Assy	-	1	-		
2	M12568	Cover, Filter	1	1	1		
3	M10908-2	*Screw, Hex hd, slotted, No. 6-32 x 3/8 in., Type "S"	1	1	1		
4	M15767G1	End Cap and Nose Cone	1	1	1		
5	WLI-4C	*Lockwasher, Internal tooth, 1/4 in.	2	2	2		
6	NPC-4C	*Nut, Plain hex, 1/4-20	2	2	2		
7	M15770G2	Combustion Chamber	1	1	1		
8	M15995	Plug Button	1	1	1		
9	(See Fig. 10)	Motor, Pump and Burner Head Assembly	1	1	1		
10	HC4-10C	*Screw, Rd. hd., 1/4-20 x 1-1/4 in.	2	2	2		
11	M16661	Clamp, Motor	4	4	4		
12	M13620	Spacer, Motor clamp	2	2	-		
13	WLM-4C	*Lockwasher, 1/4 in.	2	2	2		
14	NPC-4C	*Nut, Plain hex, 1/4-20	2	2	2		
15	M12431	**Fan, 20° Pitch	1	1	1		
16	SFK4-2	. Setscrew, Soc. hd., cup pt., 1/4-28 x 1/4 in.	2	2	2		
17	M12427G1	Fan Guard	1	1	1		
18	WLI-4C	*Lockwasher, Internal tooth, 1/4-in.	2	2	2		
19	NPC-4C	*Nut, Plain hex, 1/4-20	2	2	2		
20	M11143-1	Bushing, Strain relief	1	1	1		
21	M13942-4	*Connector (Wire Nut)	2	2	2		
22	M10813G37	Cord, Service (Extension)	1	1	2		
23	(Not Used)						
24	M10816G15	Lead, Electrode (Not used with M13277-1 Transformer)	1	1	1		
25	M15063	Transformer, G-E (Alternates: M14291, M13277-1, M14241)	1	1	1		
26	M15823-26	*Screw, Hex hd., No. 10-12 x 3/8 in., Type "B"	2	2	2		
27	(Not Used)						
28	M10990-3	Bushing, Rubber	1	1	1		
29	M11151-1	Cap, Fuel tank filler	1	1	1		
30	M14246	Seal, Rubber	1	1	1		
31	M12424	Skirt, Fuel tank	1	1	1		
32	M10716G1	Fuel Tank Assy	1	1	1		
33	M11146-1	**Element, Intake air filter	1	1	1		
34	M17018G1	Filter Body and Bracket Assy	1	1	1		
35	WLI-2C	*Lockwasher, No. 8	2	2	2		
36	RC2-2C	*Screw, Rd. Hd., No. 8-32 x 1/4 in.	1	1	1		
36	RC2-3C	*Screw, Rd. Hd., No. 8-32 x 3/8 in. (For groundwire)	1	1	1		
37	M12462-5	Relay, Motor starting (Replaces Part No. M12462-2)	1	1	1		
38	M9900G37	Wire Assy (To Relay)	1	1	1		
39	M13293	Grommet, Rubber	1	1	1		
40	M12432	Tube, Air intake	1	1	1		
41	M11084-27	Screw, Self-tapping, Hexhd, No. 10-12 x 1/2 in., Type "A"	2	2	2		

MARKINGS AND TOUCH-UP PAINT

M17081	Decal, Atomaster	1	1	1
M12634	Decal, Wiring diagram	1	1	1
M17133	Decal, Nameplate and Operating Instructions	1	1	1
M17516	Decal, Tradename	2	2	2
M17535	Decal, Private Label	1	1	1

CO-OP 50



Index No.	Part Number	Part Name or Description	Quan.	Spec. No.
	M11148G5	Motor, Pump and Burner Head Assembly	1	2810G23-1
	M1915-1	Motor, Pump and Burner Head Assembly	1	2892G23
(A)	M12428G3	Burner Head Assy	1	2892G23-1
(A)	M19113-1	Burner Head Assy	1	
1	M11054-1	Nozzle, Siphon	1	
2	M10659-1	Washer, Nozzle seal	2	
3	M10809-1	Spring, Nozzle seal	1	
4	M8882	Sleeve	1	
5	M10837	Plug, Hex hd.	1	
6	M10992-1	Screw, Adjusting	1	
7	M10993-1	Spring, Pressure relief	1	
8	M8940	Ball	1	
9	*M12461-54	Screw, Hex hd, No. 10-24 x 7/8 in.	2	
10	M12576	Body, Valve	1	
11	M12577	Gasket	1	
12	M9942G3	Output Filter Element Assyl	-	
-	M15241	Output Filter Element (Replaces M9942G3 and M12578)	1	
13	M12578	Filter, Lint	1	
14	M16895G1	Spark Plug Assy	1	
15	(Not Used)			
16	M12273	Body, Burner Head	1	
16	M19112	Body, Burner Head	-	
17	*M10908-38	Screw, No. 12-24 x 3/8 in. Type "S"	1	
18	M10718-1	O-Ring	1	
19	M14266G1	Fuel Filter Assy	1	
19A	M16790	Tube, Fuel Filter	-	
19B	M17460	Filter, Fuel	-	
-	M16791	Connector, Male	-	
-	M13849	Nut, Flared	-	
20	ROPI2-8	Roll Pin	1	
(B)	M12429G1	Motor and Pump Assy	1	
(B)	M19114-1	Motor and Pump Assy	-	
21	*FHFF3-8C	Screw, Fil. hd., No. 10-32 x 1 in.	4	
22	M12430	End Cover, Pump	1	
23	*FHFF3-4C	Screw, Fil. hd., No. 10-32 x 1/2 in.	2	
24	M8645	Body, Pump	1	
25	M11959	Rotor, Pump	1	
26	M11966-5	Spring, Pump Rotor	1	
27	M8643	Blade	1	
28	M11938	Motor (Alternate: M17941)	1	
28	M17941	Motor (Requires use of M12462-5 Relay)	-	
	M8608	End Shield	1	
	M17316	Head with Bearing	1	
29	(Not Used)			
30	M13372	Seal (O-Ring)	1	
31	*FHFF3-20C	Screw, Fil. hd., No. 10-32 x 2-1/2 in.	2	

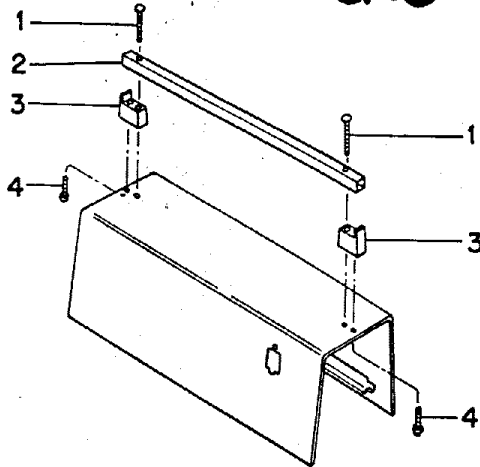
* Standard hardware - Obtainable locally.

Note 1. As parts become available, the Part Nos. M12273 Burner Head Body, M10718-1 O-Ring, and M14266G1 Fuel Filter will be replaced by Part Nos. M19112 Burner Head Body, M16791 Male Connector, M13849 Flared Nut, M16790 Filter Tube, and M17460 Fuel Filter Element. The new parts are not individually interchangeable with the old. However, a service assembly, Part No. M19756, is available which includes all of the new parts. CAUTION: A heater equipped with the M16790 Filter Tube must not be operated without the M17460 Fuel Filter Element in place in the tube.

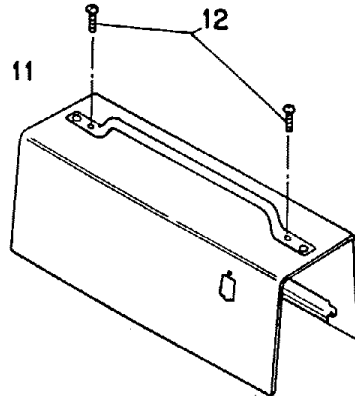
Note 2. Part No. M17941 Motor requires use of Part No. M12462-5 Relay, which may also be used with M11938 Motor, to replace M12462-2. (M12462-2 Relay may not be used with M17941 Motor.)

CO-04 50

Spec: 281G23-1, 2992G23, 2992G23



BAR TYPE



TUBE TYPE

Index No.	Part Number	Part Name or Description	Quan.	
			2810G23-1	2992G23
1	*RPC4-18C	Screw, Rd. hd., 1/4-20 x 2-1/4	2	2
2	M12440-2	Handle (Square bar)	1	1
3	M12439	Support, Handle	1	1
4	*M10908-58	Screw, Self-tapping, Hex hd., No. 10-24 x 1-1/2 in., Type "S"	2	2
11	Ref.	Housing and Handle Assy (See Fig. 9, Index No. 1)	-	-
12	RPC4-4C	Screw, Rd. hd., 1/4-20 x 1/2 in.	-	2

* Standard hardware - Obtainable locally.

