

HANDY MASTER MODEL: H30

Spec. No. 500612

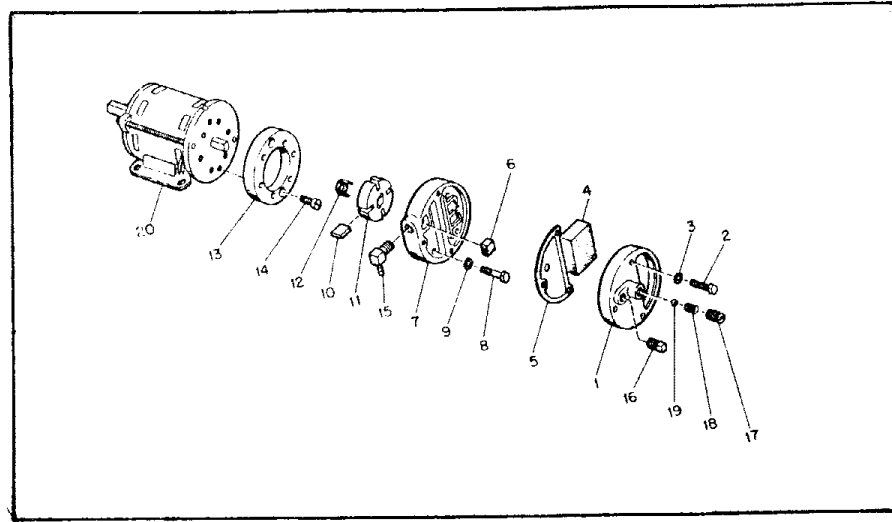


Figure 2. Motor Package Assembly

Index No.	Part Number	Part Name	Qty.	Index No.	Part Number	Part Name	Qty.
-	M29750-01	Motor Package Assembly	1	11	M22456-1	.Rotor, Pump	1
1	M29609	.End Cover, Filter	1	12	M22009	.Insert, Rotor	1
2	M12461-31	.Screw (Filter End Cover to Pump End Cover	3	13	M8645	.Pump Body	1
3	WLI-3	.Lockwasher, Internal No. 10	3	14	FHPF3-4C	.Screw, (Pump Body to Motor)	2
4	M29633	.Intake Air Filter	1	15	M50016	.Elbow	1
5	M29612-01	.Output Filter Assembly	1	16	M22997	.Plug, Socket Hd.	1
6	M26932	.Filter, Lint	1	17	M27694	.Screw, Pressure Adjustment	1
7	M29608	.End Cover, Pump (Port Plate)	1	18	M10993-1	.Spring, Compression (Pressure Relief)	1
8	M12461-32	.Screw (End Cover to Motor)	6	19	M8940	.Ball, 1/4 in. dia.	1
9	WLI-3	.Lockwasher, Internal No. 10	6	20	M29780-01	.Motor 1/35 H.P.	1
10	M8643	.Blade	4				

PARTS AVAILABLE—NOT SHOWN

M18196	Decal, Mfg. by	1
M22743	Decal, Warning	1
M22898	Decal, Nameplate	1
M29911	Decal, Tradename	1
M30728	Decal, Wiring	1
M31317	Decal, Fuel	1
M50011	Decal, Spark Plug	1

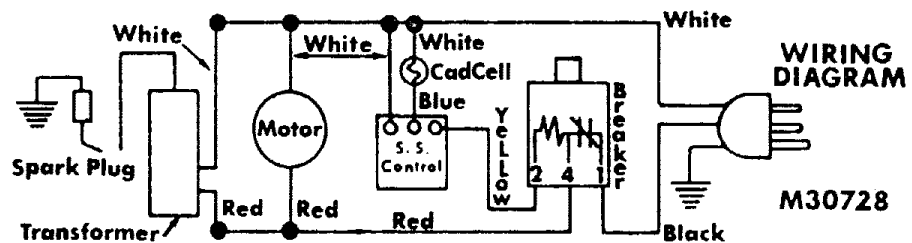


Figure 3. Wiring Diagram