

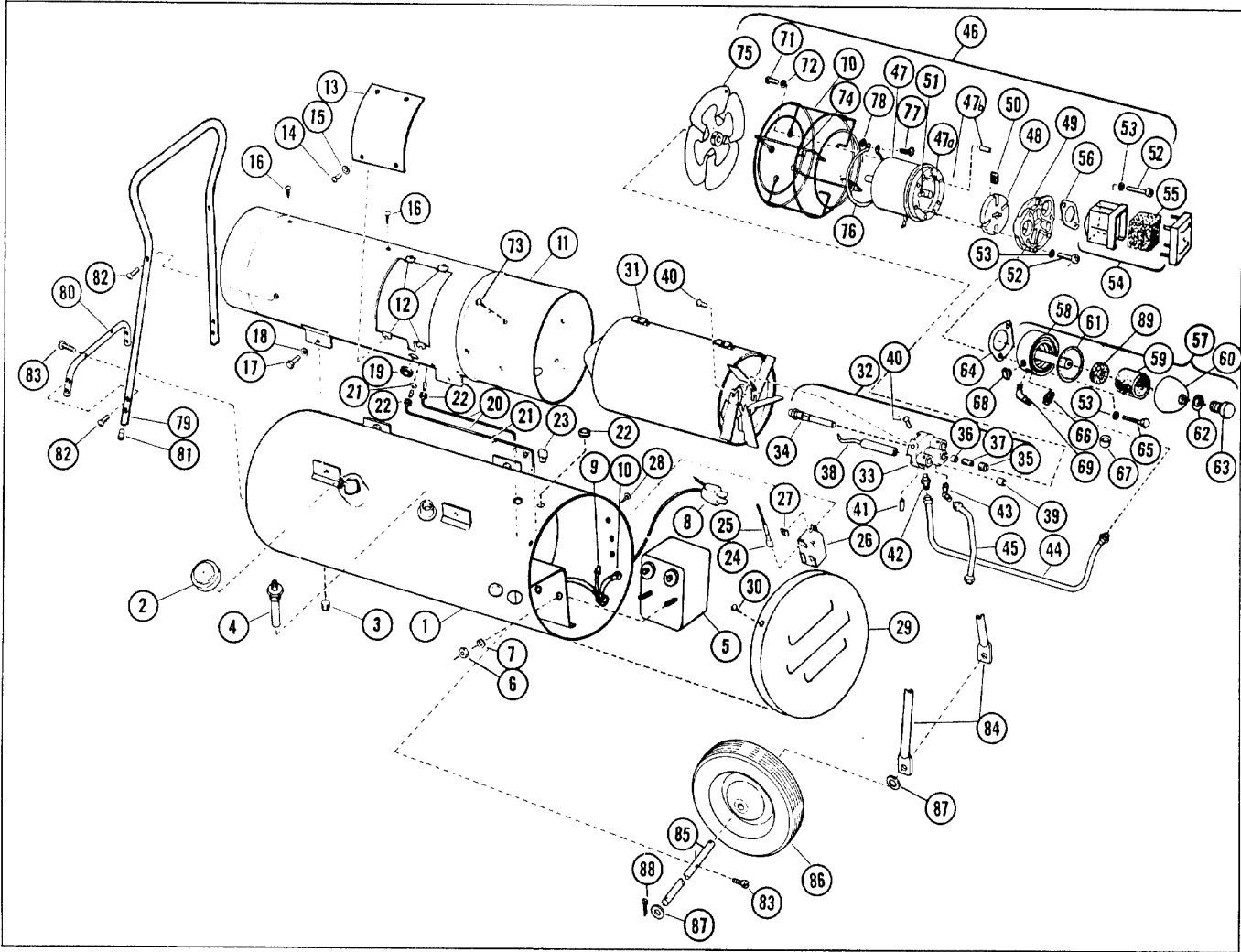
Following is a list of all parts making up your heater, with schematic drawing showing their location. All parts preceded by an Asterisk(*) designate the parts that can be replaced in the field. Replacement of all other parts should be done by the Vendor who is properly equipped to give you good service.

PARTS LIST

Key	Description	Quantity	Part No.	Key	Description	Quantity	Part No.
1	Fuel Tank.....	1	8006	46*	Motor, Grille, Fan, Pump and Filter Assembly.....	1	8054
2	Fuel Tank Cap.....	1	8079	47*	Motor and Pump Assembly.....	1	8091
3	Drain Plug.....	1	8008	47a	Pump Body.....	1	8094
4*	Fuel Filter.....	1	8005	47b	Roll Pin.....	2	ROPI2-8
5*	Transformer.....	1	8010	48	Rotor.....	1	8093
6	Nut Hex.....	2	NPC-4	49	Cover—End.....	1	8095
7	Washer—Lock.....	2	WLM-4	50	Blades—Carbon.....	4	8096
8	Extension Cord.....	1	8024	51	Pin—Rotor.....	1	8097
9	Wire Nut.....	2	8021	52	Screw—Fillister Head.....	4	FHPF-3-12
10	Terminal—Ground.....	1	8025	53	Washer—Lock.....	6	8098
11	Outer Shell.....	1	8028	54*	Cleaner—Air.....	1	8083
12	Nut—Tinnerman.....	4	8060	55*	Filter Element.....	1	8085
13*	Door Access.....	1	8066	56	Gasket.....	1	8080
14	Screw.....	4	ST2-3	57*	Filter—Out Put.....	1	8082
15	Lockwasher.....	4	WLI-2	58*	Block.....	1	8099
16	Screw—Self Tapping.....	2	STP3-4	59*	Filter—Element.....	1	8100
17	Screw.....	4	ST14-4	60*	Bowl.....	1	8081
18	Washer Flat.....	4	WP4	61*	Gasket.....	1	8088
19	Grommet.....	2	8089	62*	Washer.....	1	8084
20*	Lead Electrode.....	2	8015	63*	Screw—Thumb.....	1	8090
21	Bushing Strain Relief.....	3	8018	64*	Gasket.....	1	8119
22	Grommet.....	3	8009	65	Screw—Fillister Head.....	2	FHPF-3-14
23	Strain Relief Bushing.....	3	8020	66	Valve Pressure Relief.....	1	8086
24	Tubing, Polyform No. 8.....	3	8014	67	Cap—Seal.....	1	8101
25	Lead, Starting Relay To Line.....	1	8011	68	Plug.....	1	8102
26	Relay.....	1	8022	69	Elbow—45°.....	1	8103
27	Nut Tinnerman.....	2	8023	70	Grille.....	1	8057
28	Screw Self Tapping.....	2	ST1-3B	71	Screw—Round Head.....	4	RC2-3
29*	End Cover.....	1	8068	72	Lockwasher.....	4	WLE-2
30	Screw Self Tapping.....	4	ST2-3B	73	Screw—Round Head.....	4	ST3-4B
31	Combustion Chamber.....	1	8033	74	Nut—Tinnerman.....	4	8058
32*	Burner Assembly.....	1	8043	75	Fan.....	1	8056
33	Body Burner.....	1	8044	76	Ring Grille Support.....	1	8059
34	Nozzle.....	1	8045	77	Screw—Round Head.....	1	RC3-10C
35	Plug Pipe.....	1	8047	78	Nut—Flex Lock.....	1	NLC-3
36	Sleeve.....	1	8048	79	Leg—Front.....	1	8135
37	Nut, Gland.....	1	8049	80	Front Leg Brace.....	1	8136
38	Electrode Left Hand.....	1	8051	81	Plug—Button.....	2	8026
38	Electrode Right Hand.....	1	8050	82	Screw Round Head Slotted.....	8	RF3-8C
39	Bushing.....	2	8052	83	Screw.....	4	ST3 1/2-8
40	Screw Round Head.....	3	RF3-3C	84	Leg—Rear.....	1	8137
41	Pin—Roll.....	3	ROPI2-8	85	Axle.....	1	8138
42	Connector.....	1	8053	86	Wheel.....	2	8078
43	Elbow.....	1	8046	87	Washer.....	4	WP-8
44*	Air Line.....	1	8017	88	Cotter Pin.....	2	C4-8
45*	Fuel Line.....	1	8061	89	Filter.....	1	8139

N/A

QUEEN-B MODEL QBI2 FORM NO. QBI2-B



QUEEN-B MODEL Q812

Form No. Q812-B