

Fig. 16

Index No.	Part Number	Part Name	Qty.
-	M23149-1	Motor Package Assembly	1
1	M16545	End Cover, Filter	1
2	M12461-31*	Screw (Filter End Cover to Pump End cover)	4
3	WLI-3	Lockwasher, Internal No.10	4
4	M12179	Intake Air Filter	1
5	M12244-1	Output Filter Assy	1
6	M11637	Filter, Lint	1
7	M12233	Front Cover, Pump (Port Plate)	1
8	M12461-32*	Screw (End Cover to Motor)	6
9	WLI-3	Lockwasher, Internal No.10	6

Fig. 16

Index No.	Part Number	Part Name	Qty.
10	M8643	Blade	4
11	M22456-1	Rotor	1
12	M22009	Insert	1
13	M8645	Pump Body	1
14	FHPP3-4C	Screw (Pump Body to Motor)	2
15	M5976	Connector, Male	1
16	M22997	Plug	1
17	M23105	Screw, Pressure Adjustment	1
18	M10993-1	Spring, Compression (Pressure Relief)	1
19	M8940	Ball, 1/4 in. dia.	1
20	M23107-1	Motor	1

* Standard hardware. Purchase locally.

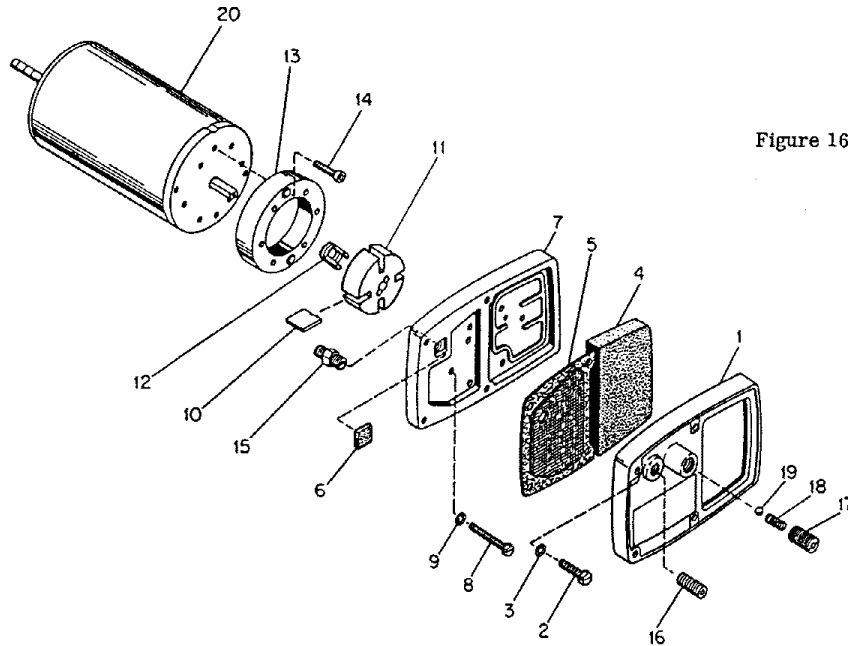


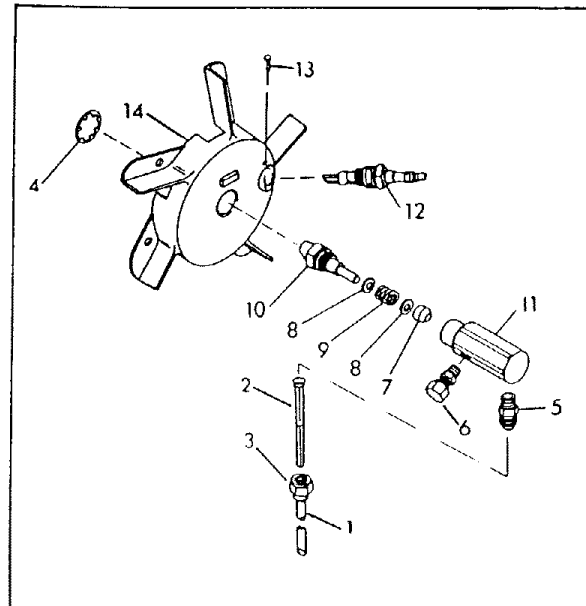
Figure 16. Motor Package Assembly

BURNER HEAD ASSEMBLY

Fig. 14

Index No.	Part Number	Part Name	Qty.
14-	M23150-1	Burner Head Assembly	1
1	M16790-2	Filter Tube	1
2	M19630	Filter, Fuel	1
3	M13849	Nut, Flared	1
4	M16741-18	Ring, Retaining	1
	M23151-1	Nozzle Adapter Assy	1
5	M16791	Connector, Male	1
6	M5976	Connector, Male	1
7	M8882	Sleeve, Nozzle Seal	1
8	M10659-1	Washer, Nozzle Seal	2
9	M10809-1	Spring, Nozzle Seal	1
10	M23103	Nozzle, Aspirating 0.66 GPH	1
11	M16535	Adapter, Nozzle	1
12	M16895-1	Spark Plug Assy	1
13	M12461-51	Screw	1
14	M16534	Body, Burner Head	1

Figure 14. Burner Head Assembly



WIZARD

MODEL WA-100 and WA-100S

SECTION VI

SPEC. NO. 3114G09 and 3114G24

PARTS LIST

Form No. 2735-1 (7/72)

This list contains all replaceable parts used in the heater covered by this manual, with index numbers for easy reference between the list and the exploded view.

When ordering parts, check the model decal for the correct model number, specification number, and serial number

of the heater. Include the MODEL, SPECIFICATION, and SERIAL numbers when ordering parts. ORDER PARTS BY PART NAME AND PART NUMBER ONLY. DO NOT use the index numbers from the illustration when ordering parts. Specify color when ordering painted parts.

Heater General Assembly

Fig. 13			WA-100	WA-100S	Fig. 13			WA-100	WA-100S
Index No.	Part Number	Part Name			Index No.	Part Number	Part Name		
1	M13134-3F	Shell, Upper	1	1		M11084-29*	Screw (Lower Shell to Support Bracket)	2	2
2	M16781-4	Chamber, Combustion	1	1	20	1000576	Grommet (Ignition cable thru Lower Shell)	2	3
	M11084-27*	Screw (Combustion Chamber attaching front)	2	2	21	M15809	Plug, Button (17/32 in. dia. hole)	1	-
	M11084-29*	Screw (Combustion Chamber attaching rear)	2	2	22	M16646	Bracket, Motor Support	1	1
3	M15995	Plug, Button (Combustion Chamber rear head)	1	-		M11084-27*	Screw (Motor Support Bracket to Lower Shell and Fuel tank)	6	6
4	M16660	Bracket, Photocell	-	1	23	1000576	Grommet (Motor Leads thru Motor Support Bracket)	1	1
	M10908-1*	Screw (Photocell Bracket to Combustion Chamber rear head)	-	2	24	M16697	Transformer, 5000 Volt	1	1
5	M16656-1	Cell and Bushing Assy	-	1		M11084-27	Screw (Transformer to Motor Support Bracket)	2	2
6	Ref.	Burner Head Assembly (See figure 14)	1	1	25	M11954	Bushing, Strain Relief (Service Cord to Lower Shell)	1	1
	M11084-27*	Screw (Burner Head to Combustion Chamber)	3	3	26	M10813-33	Cord Assembly, Extension	1	-
7	M16879	Air Line	1	1	26	M10813-34	Cord Assembly, Extension	-	1
7A	M12461-27	Screw, Slotted hex hd., No. 10-32 x 1/2 in.	-	1	27	M18360-4E	Tank Assembly, Fuel	1	1
7B	M24717	Clamp, Tube	-	1	28	M23284	Cap, Fuel Tank	1	1
7C	WLM-3	Lockwasher, No. 10	-	1	29	M18053	Screen, Filler neck	1	1
7D	NPF-3C	Nut, Plain No. 10-32	-	1	30	M10990-3	Bushing, Rubber (Fuel Filter into Fuel Tank)	1	1
8	M15807	Strap, Retainer	1	1	31	M21040	Plug, Pipe, Hex hd., 1/4-18	1	1
	M11084-27*	Screw (Retainer Strap to Lower Shell)	2	2	32	M11952	Bracket, Starting Relay Mtg.	1	-
9	M23147	Fan	1	1	33	M12462-9	Relay, Starting	1	-
10	SF4-2-1/2K	Setscrew, Soc. Hd., cup pt., 1/4-20 (Fan to Motor Shaft)	2	2		RC2-2C*	Screw (Starting Relay to Mounting Bracket)	2	-
11	Ref.	Motor Package Assembly (See figure 16)	1	1		WLI-2	Lockwasher, Internal No. 8	2	-
12	M16661	Clamp, Motor	4	4		ST2-2AC	Screw (Grounding)	1	1
13	HC4-10C*	Screw (Motor Clamps)	2	2		M11084-27	Screw (Relay Bracket to Shell)	1	1
14	WLM-4*	Lockwasher 1/4 in. (Motor Clamps)	2	2		M16852-5	Relay Bracket Assembly	-	NA
15	NPC-4C*	Nut, Hex, 1/4-20 (Motor Clamps)	2	2	34	M12462-9	. Relay	-	1
16	M16777F	Shell, Lower	1	1	35	RC2-2C*	. Screw (Relay to Relay Brkt)	-	2
17	M11084-27*	Screw (Upper Shell to Lower Shell)	6	6	36	M14378-2	. Relay Assembly	-	1
18	M11271-6*	Nut, Tinnerman (Upper Shell to Lower Shell)	6	6	37	M12461-2*	. Screw (Relay to Relay Brkt)	-	1
19	M12330A	Bracket, Shell Support	1	1	38	M14360	. Breaker, Circuit	-	1
	M11084-27*	Screw (Support Bracket to Lower Shell and Fuel Tank)	4	4	39	M16851-1	. Bracket Assembly, Control	-	1
						M9900-62	Wire Assembly, Black (To Starting Relay)	1	-
						M9900-80	Wire Assembly (To Breaker)	-	1
						M16615-1	Harness Assembly	-	1
						M13942-2	Connector (Cell and Bushing and Relay to Circuit Breaker)	-	3
						M13942-4	Connector (Relay Leads)	2	2

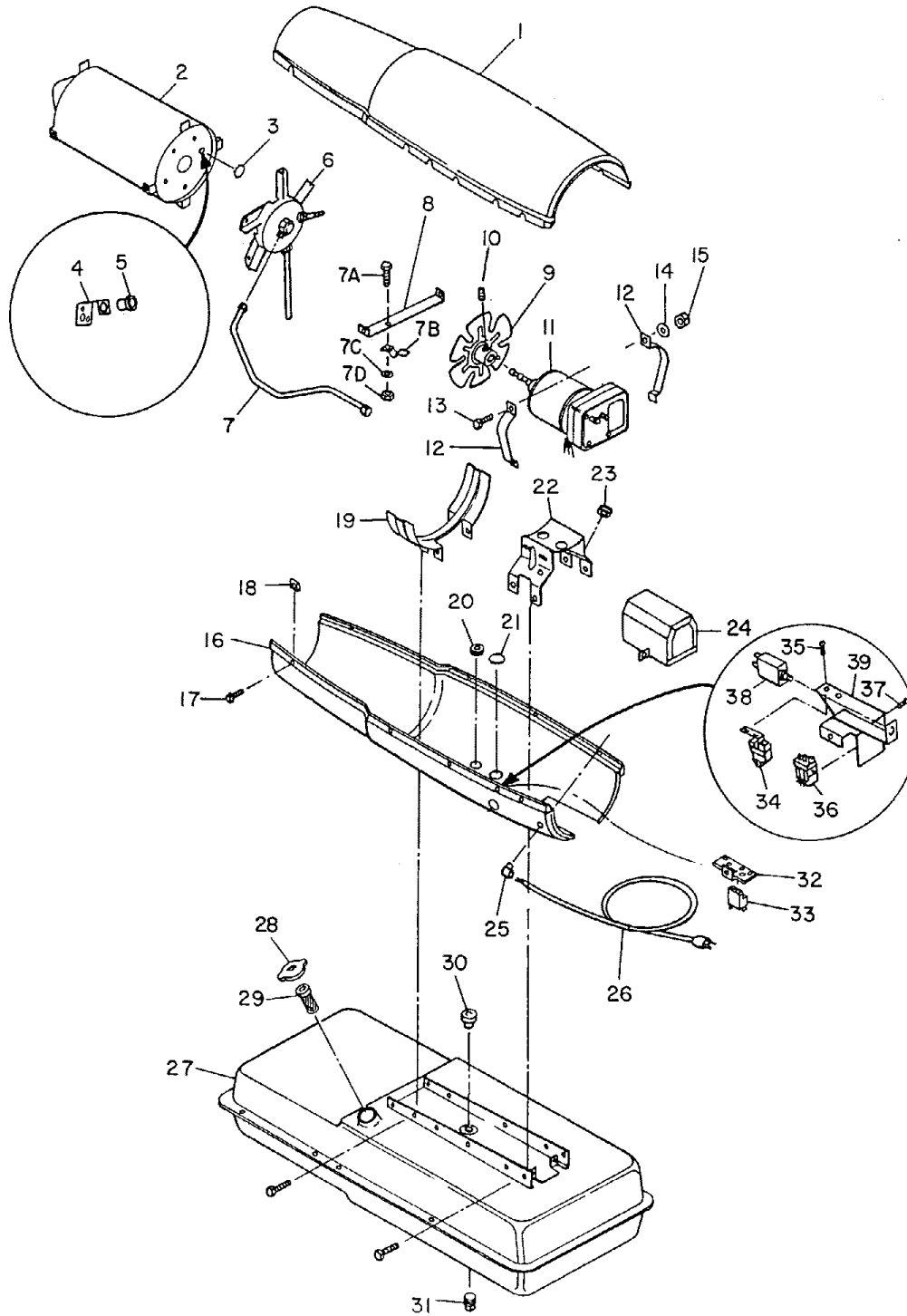
*Standard hardware.

WIZARD

MODEL WA-100 and WA-100S

SPEC. NO. 3114G09 and 3114G24

Form No. 2735-1 (7/72)



516C

Figure 13 Heater Exploded View

WIZARD PORTABLE HEATER

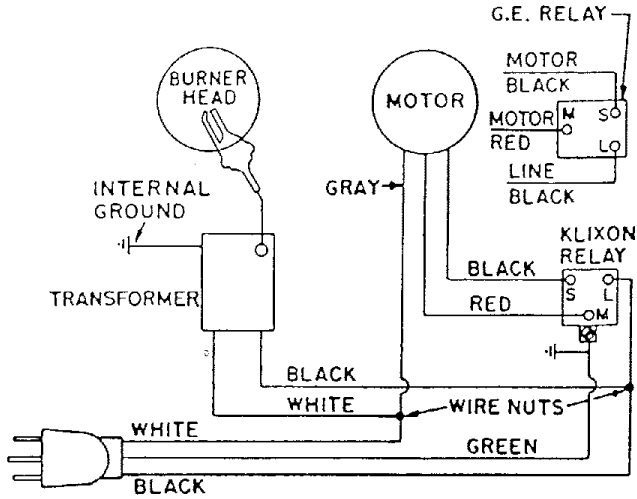
MODEL WA-100 and WA-100S

SPEC. NO. 3114G09 and 3114G24

Form No. 2735-1 (7/72)

WIRING DIAGRAMS

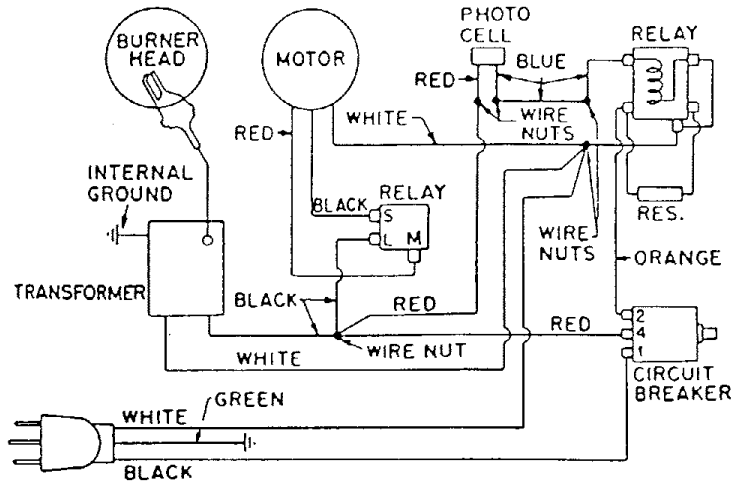
WA-100



M12634

521

WA-100S



M17218

520

Figure 9. Wiring Diagram

WHEELS, HANDLES, MARKINGS

Fig. 15

Index No.	Part Number	Part Name	Qty.
-	M22743	Decal, Warning	1
-	M22898	Decal, Name Plate	1
-	M23152-18	Decal, Model (WA-100S)	1
-	M23152-6	Decal, Model (WA-100)	1
1	M12634	Decal, Wiring Diagram (Inside Upper Shell) (WA-100)	1
-	M17218	Decal, Wiring (WA-100S)	1
2	M17137	Decal, Trade Name (WA-100)	2
-	M16755	Decal, Trade Name (WA-100S)	1
-	M17081	Decal, Atomaster	1
3	M17160	Decal, Private Label	1
4	M17134	Decal, Nameplate and Operation Instructions	1
5	M15131A	Handle, Rear	1
6	M15808A	Handle, Front	1
7	M12342B	Frame, Wheel Support	1
8	M12345-31	Screw, Oval hd., Mach., No. 10-24 x 1-1/4 in.	2
9	M12345-34	Screw, Oval hd., Mach., No. 10-24 x 2 in.	8
10	WP-3C	Washer, Flat, No. 10	2
11	NTC-3C	Nut, No. 10-24, Torque-Lock	10
12	M16802	Hub Cap	2
13	M16741-15	Ring, Retaining	2
14	WP-8C	Washer, Flat, 1/2 in.	2
15	M19294	Wheel	2
16	M16801	Axle	1
		TOUCH-UP PAINT	
	M23353-9	Paint, White, Aerosol Can	
	M23353-10	Paint, Black, Aerosol Can	
	M23353-13	Paint, Orange, Aerosol Can	

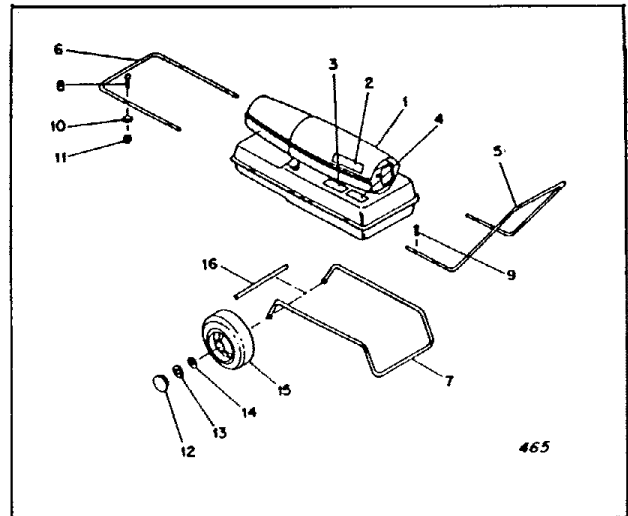


Figure 15. Wheels, Handles, Markings