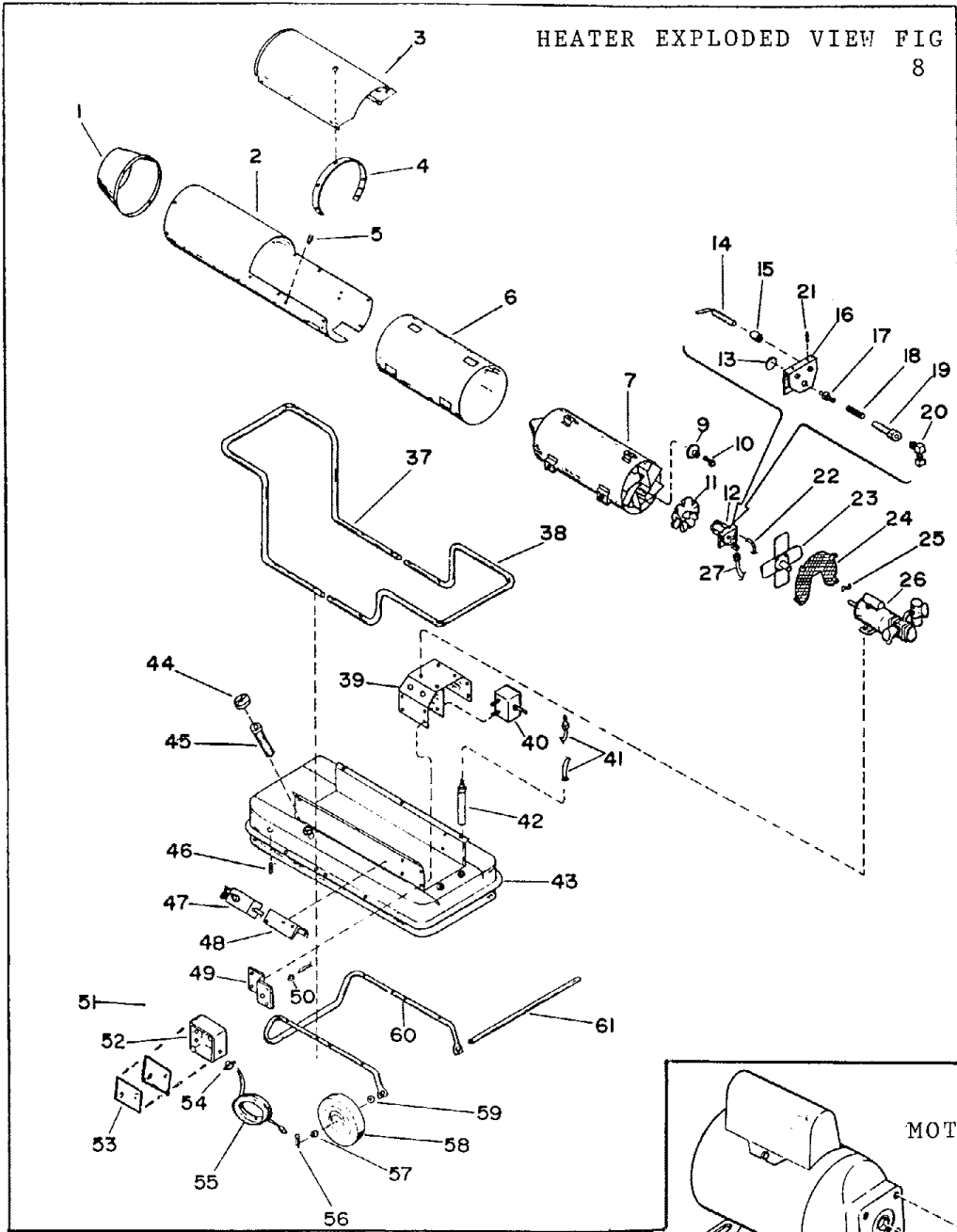
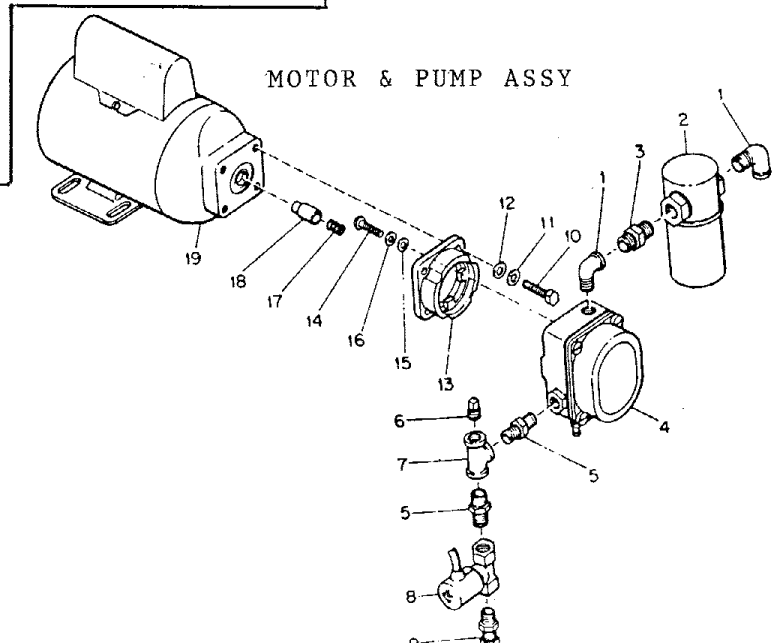


REDDY HEATER ME300 SPEC 3126G06 HIGH PRESSURE M25167-02

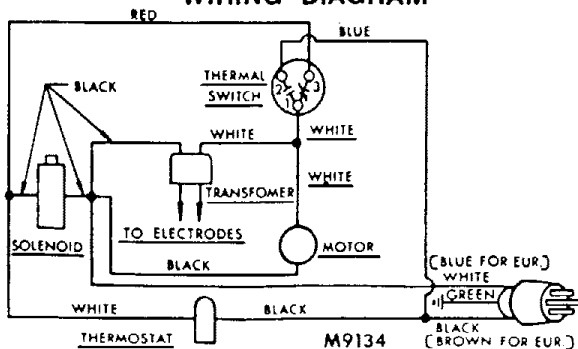
HEATER EXPLODED VIEW FIG 8



MOTOR & PUMP ASSY



WIRING DIAGRAM



READY TO BE
HIGH PRESSURE

VIE 300

SPEC 3126G06

M25167-02

Index No.	Part Number	Part Name	Qty.
1	M18089D	Nose Cone	1
	M11084-27	Screw, No. 10-12 x 1/2 (Nose Cone to Outer Shell)	6
2	M18085AC	Outer Shell	1
	M11084-27	Screw, No. 10-12 x 1/2 (Outer Shell to Tank)	6
3	M18087D	Cover, Outer Shell	1
	M11084-27	Screw, No. 10-12 x 1/2 (Cover to Outer Shell)	6
	M11271-6	Nut, Tinnerman (Cover to Outer Shell)	6
4	M22905A	Support, Cover	1
	M12461-26	Screw, No. 10-32 x 3/8 in. (Support to Outer Shell)	5
5	1000576	Grommet	4
6	M31336-01	Deflector, Heat	1
	M12461-26	Screw, No. 10-32 x 3/8 in. (Outer Shell to Combustion Chamber)	6
7	M18773-3	Combustion Chamber	1
9	M31301-02	Switch, Fan	1
10	ST2-8BC	Screw, No. 8-15 x 1 (Fan Switch attaching)	2
11	M23537	Plate, Deflector	1
12	M18777-2	Nozzle and Electrode Adaptor Assembly	1
13	M16741-18	Retaining Ring, Nozzle	1
14	M3981	Electrode	2
15	M28340	Bushing, Electrode	2
	M12461-14	Screw, 8-32 x 3/8 (Electrode Clamping)	2
16	M18775	Bracket, Nozzle	1
17	M22626	Nozzle	1
18	M4274	Spring	1
19	M18776	Adapter	1
20	69248	Elbow	1
21	M11084-27	Screw, No. 10-12 x 1/2 (Adapter Mounting)	2
22	M10816-33	Electrode Lead	2
23	M23367	Fan	1
24	M23386-1A	Guard, Fan	1
25	M21964	Key, Fan locating	1
	M12461-25	Screw, Hex hd., 10-32 x 1/4	4
	WLM-3C	Lockwasher No. 10	4
26	M23373-3	Motor and Pump Assembly (See Figure 4 for details)	1
	HC4-5C	Screw, 1/4-18 x 2 (Motor Mounting)	4

Index No.	Part Number	Description	Quan.
	M23373-3	Motor and Pump Assy.	N/A
1	57413	Elbow, Street 1/4 in.	1
2	M3973	Filter, Fuel	1
	M4307	Filter, Can	1
	M3301-2	Filter, Gasket	1
	M3301	Filter, Element	1
3	M17499-1	Nipple	1
4	M22872-1	Pump, Fuel	1
5	69246	Nipple, Pipe 1/8 in.	2
6	57419	Pipe Plug	1
7	69255	Tee	1
8	M31372	Valve, Solenoid	2
9	M5976	Connector, Male	1

Index No.	Part Number	Part Name	Qty.
	NPC-4C	Nut, Torque Lock 1/4-18	4
	WP-4C	Washer, Plain 1/4	4
27	M18877	Fuel Line, Pump to Nozzle	1
37	M50537	Handle, Front	1
38	M50536	Handle, Rear	1
	M12345-49	Screw, No. 10-24 x 2 1/4 Handle to Fuel Tank)	8
39	M19513-1A	Motor Bracket Assembly	1
	M11084-27	Screw, 10-12 x 1/2 in. (Motor Bracket attaching)	6
40	M8434-3	Transformer	1
	WLM-4C	Washer, Lock 1/4 in.	2
41	M3334-10	Fuel Line Assembly	2
42	M18919-1	Fuel Intake Tank	2
43	M18298-2AA	Fuel Tank Assembly	1
44	M23284	Fuel Cap	1
45	M18053	Screen Filler Neck	1
46	M8257	Drain Plug	1
47	M25125-4	Thermostat Assembly	1
	RC1-3C	Screw Rd., Hd. 6-32 x 3/8 in.	2
	WL1-1	Washer Lock No. 6	4
	NPC-1C	Nut, Plain No. 6-32	2
48	M25121A	Bracket, Thermostat	1
	M11084-27	Screw, 10-12 x 1/2	2
	WL1-3	Lockwasher No. 10 (Bracket to Shell Support)	2
49	M21786A	Bracket, Switch Box	1
	M11084-27	Screw No. 10-12 x 1/2 (Bracket to Tank)	2
	WL1-3	Lockwasher No. 10	2
50	1000576	Grommet	2
52	Switch Box		
52	M25138	Switch Box	1
	M12461-27	Screw, 10-32 x 1/2	2
	NTF-3C	Nut, Torque Lock 10-32 (Box Attaching)	2
53	M25208A	Cover, Box	1
	M25209	Gasket	1
54	1001349	Connector	2
55	M15779-19	Extension Cord	1
56	C5-10C	Pin, cotter, 5/32 x 1 1/4 in.	2
57	WP-10C	Washer Flat, 5/8 in.	2
58	M8111	Wheel	2
59	WP-10C	Washer, Flat, 5/8 in.	2
60	M50535	Frame, Wheel Support	1
61	M18774A	Axle	

Index No.	Part Number	Description	Quan.
10	*HC5-7C	Screw, Hex hd., 5/16-18 x 3/4 in.	4
11	*WLM-5C	Lockwasher, 5/16 in.	4
12	*WP-5C	Washer, Plain 5/16 in.	4
13	M22348	Adapter	1
14	*RF3-6C	Screw, Rd. hd., No. 10-32 x 3/4 in.	3
15	*WLM-3	Lockwasher No. 10	3
16	*WP-3	Washer, Flat	3
17	M18436	Spring	1
18	M22873	Coupling	1
19	M23357-2	Motor	1