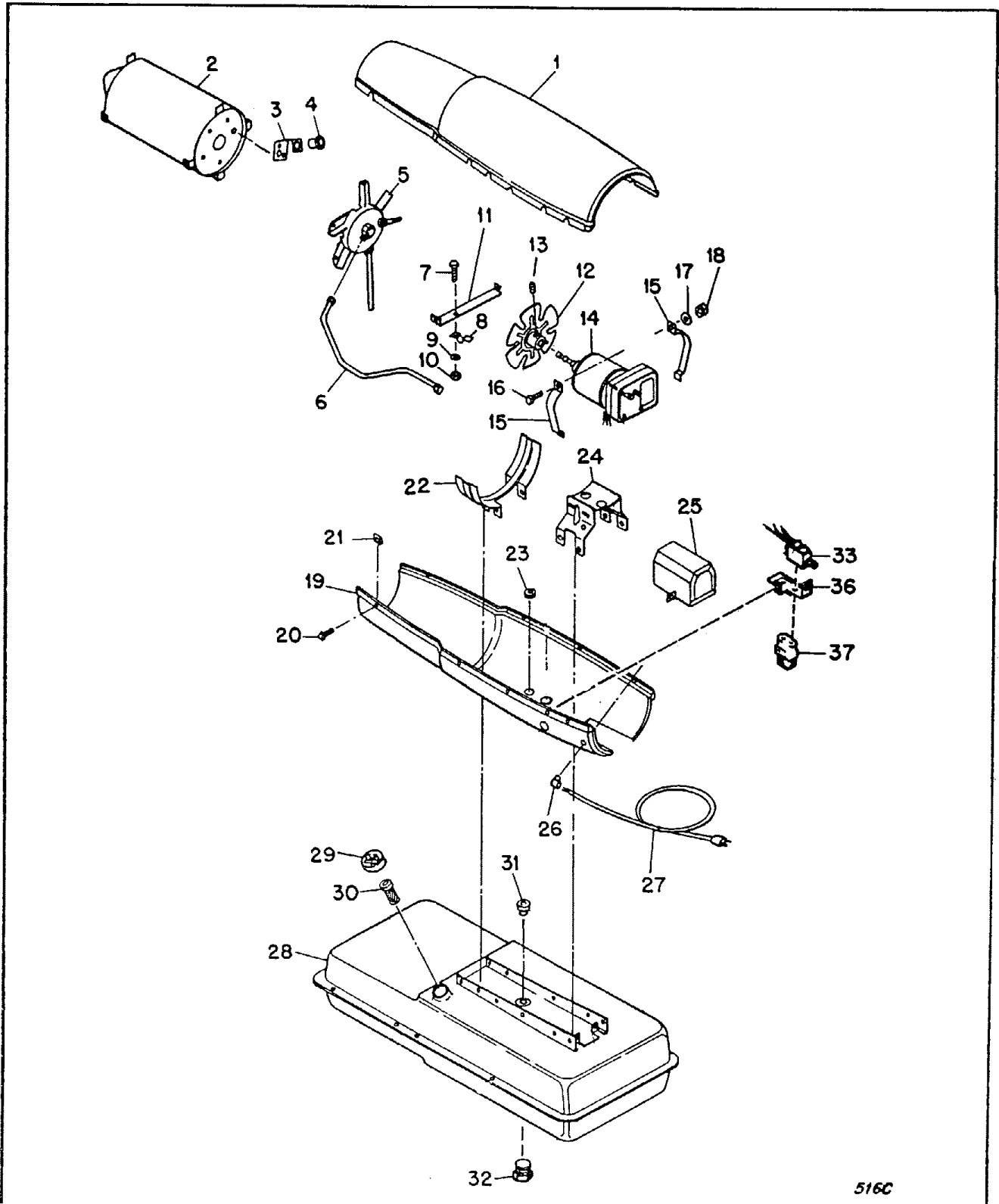


REDDY HEATER MA100 SPEC 3059G30 LOW PRESSURE M29870-93



REDDY HEATER MA100 SPEC 3054 G30 LOW PRESSURE M29870-93

Fig. 13 HEATER EXPLODED VIEW

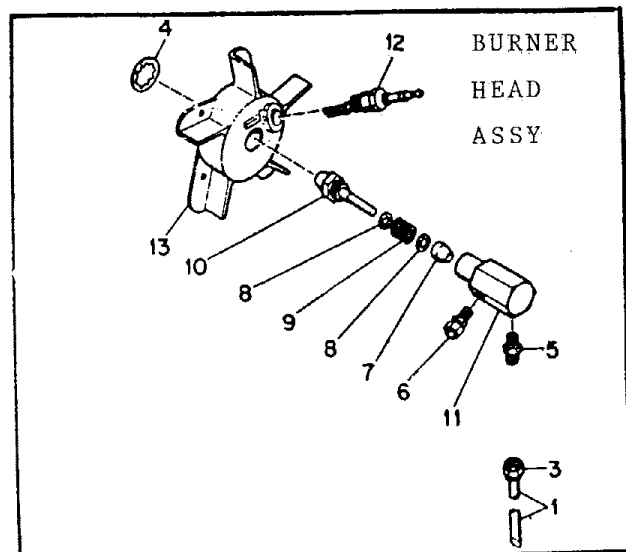
Index No.	Part Number	Part Name	Qty.
1	M13134-3D	Shell, Upper	1
2	M16781-4	Chamber, Combustion	1
	M11084-27*	Screw (Combustion Chamber attaching front)	2
	M11084-29*	Screw (Combustion Chamber attaching rear)	2
3	M16660	Bracket, Photocell	1
	M10908-1*	Screw (Photocell Bracket to Combustion Chamber rear head)	2
4	M16656-4	Cell and Bushing Assy.	1
5	M23150-2	Burner Head Assembly (See Figure 14)	1
	M11084-27*	Screw (Burner Head to Combustion Chamber)	3
6	M16879	Air Line	1
7	M12461-27	Screw, Slotted hex hd. No. 10-32 x 1/2 in.	1
8	M24717	Clamp, Tube	1
9	WLM-3	Lockwasher, No. 10	1
10	NPF-3C	Nut, Plain No. 10-32	1
11	M15807	Strap, Retainer	1
	M11084-27*	Screw (Retainer Strap to Lower Shell)	2
12	M23148	Fan	1
13	SF4-1/2K	Setscrew, Soc. Hd.: cup pt., 1/4-20 (Fan to Motor Shaft)	2
14	M23149-2	Motor Package Assembly (See Figure 16)	1
15	M16661	Clamp, Motor	4
16	HC4-10C	Screw (Motor Clamps)	2
17	WLM-4*	Lockwasher, 1/4-20 (Motor Clamps)	2
18	NPC-4C*	Nut, Hex, 1/4-20 (Motor Clamps)	2
19	M16777D	Shell, Lower	1
20	M11084-27*	Screw (Upper Shell to Lower Shell)	6
21	M11271-6*	Nut, Tinnerman (Upper Shell to Lower Shell)	6

Fig. 13 HEATER EXPLODED VIEW

Index No.	Part Number	Part Name	Qty.
22	M12330	Bracket, Shell Support	1
	M11084-27*	Screw (Support Bracket to Lower Shell and Fuel Tank)	4
	M11084-29*	Screw (Lower Shell to Support Bracket)	2
23	1000576	Grommet (Ignition cable thru Lower shell)	2
24	M16646	Bracket, Motor Support	1
	M11084-27*	Screw (Motor Support Bracket to Lower Shell and Fuel Tank)	6
25	M17921	Transformer, 5000 volt	1
	M11084-27	Screw (Transformer to Motor Support Bracket)	2
26	M11143-1	Bushing, Strain Relief (Service Cord to Lower Shell)	1
27	M15779-22	Cord Assembly, Extension	1
28	M27552-01AA	Tank Assembly, Fuel	1
29	M23284	Cap, Fuel Tank	1
30	M50323	Screen, Filler Neck	1
31	M10990-3	Bushing, Rubber (Fuel Filter into Fuel Tank)	1
32	M27417	Plug, Drain	1
33	M50416-03	Safety Control Assembly	1
36	M25296-1	Bracket, Starting Relay Mtg.	1
37	M12462-11	Relay, Starting	1
	RC2-2C*	Screw (Starting Relay to Mounting Bracket)	2
	M11084-26	Screw (Grounding)	1
	M11084-27	Screw (Relay Bracket to Shell)	1
	M9900-62	Wire Assembly, Black (To Starting Relay)	1
	M9900-80	Wire Assy. (To Breaker)	1
	M16615-1	Harness Assy.	1
	M13942-7	Connector (Cell and Bushing and Relay to Circuit Breaker)	1
	M13942-5	Connector (Relay Leads)	4

Fig. 14 BURNER HEAD ASSY

Index No.	Part Number	Part Name	Qty.
14-	M23150-2	Burner Head Assembly	Ref
1	M16789-6	Filter, Fuel Assy.	1
3	M13849	Nut, Flared	1
4	M16741-18	Ring, Retaining	1
	M23151-1	Nozzle Adapter Assy	1
5	M16791	Connector, Male	1
6	M5976	Connector, Male	1
7	M8882	Sleeve, Nozzle Seal	1
8	M10659-1	Washer, Nozzle Seal	2
9	M10809-1	Spring, Nozzle Seal	1
10	M23103	Nozzle, Aspirating 0.66 GPH	1
11	M16535	Adapter, Nozzle	1
12	M10962-2	Spark Plug	1
13	M16534	Body, Burner Head	1



REDDY HEATER MA100 SPEC 3059G30 LOW PRESSURE M29870-93

HANDLE & WHEEL KIT

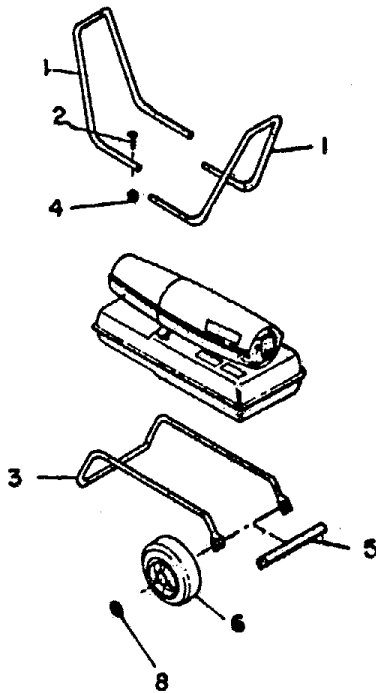


Fig. 15 HANDLE & WHEEL KIT

Index No.	Part Number	Part Name	Qty.
1	M15131-3	Handle, Front and Rear	2
2	M12345-34*	Screw, Handles and Wheel Support Frame to Fuel Tank	8
3	M12342-3	Wheel Support Frame	1
4	NTC-3C*	Nut, Hex 10-24, Torque Lock	8
5	M16801A	Axle	1
6	M19294	Wheel	2
8	M28526	Nut, Cap	2

MOTOR & PUMP ASSY

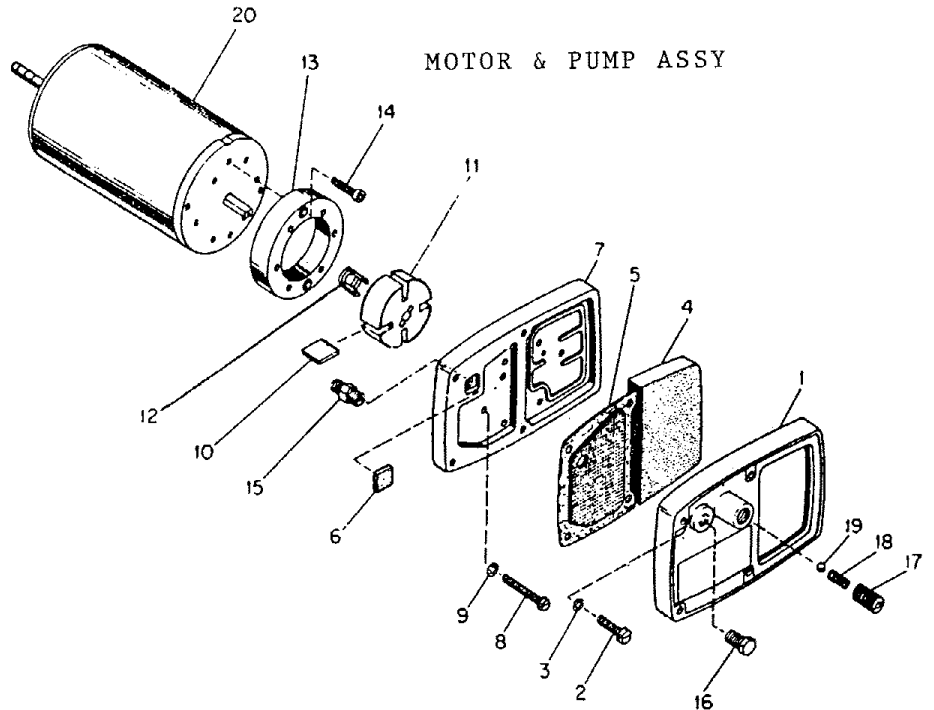


Fig. 14 MOTOR & PUMP ASSY

Index No.	Part Number	Part Name	Qty.
-	M23149-2	Motor Package Assembly	Ref
1	M16545	End Cover, Filter	1
2	M12461-31*	Screw (Filter End Cover to Pump End cover)	4
3	WLI-3	Lockwasher, Internal No. 10	4
4	M12179	Intake Air Filter	1
5	M12244-1	Output Filter Assy	1
6	M11637	Filter, Lint	1
7	M50645	Front Cover, Pump (Port Plate)	1
8	M12461-32*	Screw (End Cover to Motor)	6
9	WLI-3	Lockwasher, Internal No. 10	6
10	M8643	Blade	4
11	M22456-1	Rotor	1
12	M22009	Insert	1
13	M8645	Pump Body	1
14	FHPF3-4C	Screw (Pump Body to Motor)	2
15	M5976	Connector, Male	1
16	M22997	Plug, Hex hd.	1
17	M27694	Screw, Pressure Adjustment	1
18	M10993-1	Spring, Compression (Pressure Relief)	1
19	M8940	Ball, 1/4 in. dia.	1
20	M23107-2	Motor	1

*Standard Hardware. Purchase Locally.

WIRING DIAGRAM

