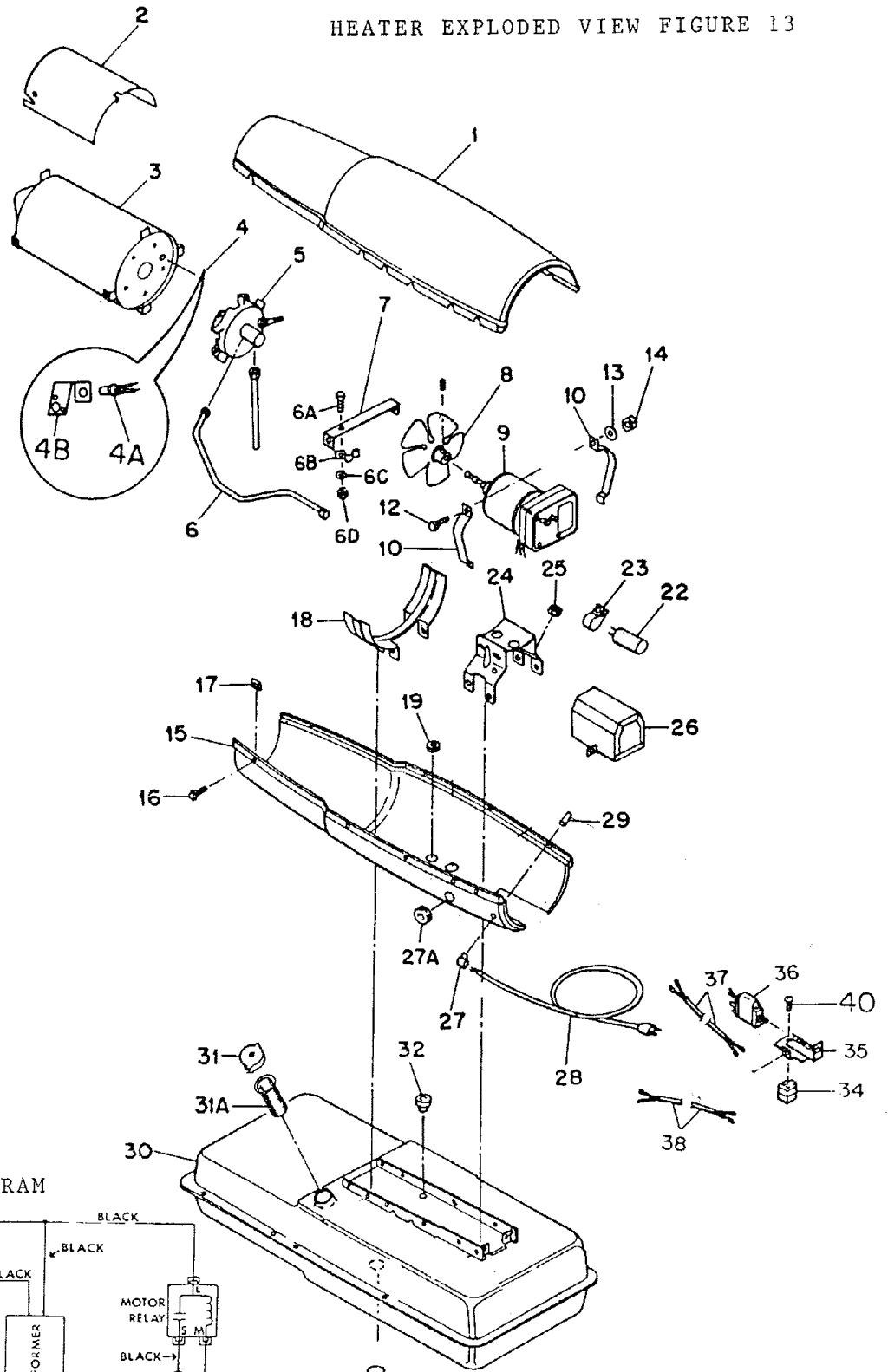
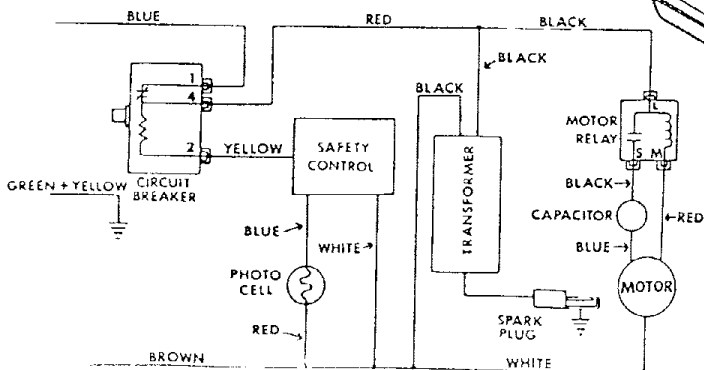


REDDY HEATER MA150 SPEC 3059G38 LOW PRESSURE

HEATER EXPLODED VIEW FIGURE 13



WIRING DIAGRAM



REDDY HEATER MA150 SPEC 3059G38 LOW PRESSURE

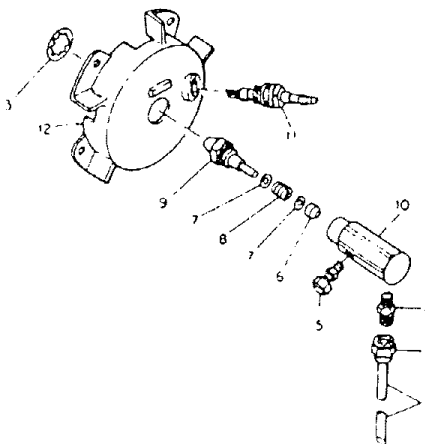
HEATER EXPLODED VIEW FIGURE 13

Index No	Part Number	Part Name or Description	Ref. Notes	Quan.
1	M17015-1D	Shell Assy, Upper		1
2	M16679	Deflector, Heat		1
3	M16887-6	Combustion Chamber		1
	M11084-27	Screw (Combustion Chamber attaching front)	*\$	2
	M11084-29	Screw (Combustion Chamber attaching, rear)	*\$	2
4	Ref.			
4A	M16656-4	Photo Cell Assy.		1
4B	M16660	Photo Cell Bracket		1
5	Ref.	Burner Head Assembly (See Fig. 14)	@	1
	M11084-27	Screw (Burner Head to Combustion Chamber)	@	1
6	M16804	Air Line	@	1
6A	M12461-27	Screw (Clamp to retainer strap)	x	1
6B	M24717	Clamp, Tube	x	1
6C	WLM-3	Lockwasher, No. 10	x	1
6D	NPF-3C	Nut, Plain, No. 10-32	x	1
7	M16871	Strap Retainer		1
	M11804-27	Screw (Retainer Strap to Lower Shell)	*\$	2
8	M17920	Fan, 20-Pitch		1
	SF4-2-1/2K	Setscrew, Soc. Hd., cup pt. 1/4-28 (Fan to Motor Shell)		2
9	Ref.	Motor Package Assembly (See Fig. 15)	@	1
10	M16661	Clamp, Motor		4
12	HC4-10C	Screw (Motor Clamps)	*\$	2
13	WLM-4	Lockwasher, 1/4 in. (Motor Clamps)	\$	2
14	NPC-4C	Nut, Hex 1/4-20 (Motor Clamps)		2
15	M16810D	Shell, Lower	Q	1
16	M11804-27	Screw (Upper Shell to Lower Shell)	*\$	8
17	M11271-6	Nut, Tinnerman (Upper shell to Lower shell)	\$	8

HEATER EXPLODED VIEW FIGURE 13

Index No.	Part Number	Part Name or Description	Ref. Notes	Quan.
18	M12828	Bracket, Shell Support		1
	M11084-27	Screw (Support Bracket to Lower Shell and Fuel Tank)	*\$	6
	M11084-29	Screw (Lower Shell to Support Bracket)	*\$	2
19	1000576	Grommet (Ignition cable thru Lower Shell)	&	1
22	M12650-3	Capacitor		1
23	M12651-1	Clamp, Tinnerman		1
	M15823-26	Screw (Capacitor Clamp to Motor Support Bracket)	*\$	1
24	M16645	Bracket, Motor Support		1
	M11084-27	Screw (Motor Support Bracket to Lower Shell and Fuel Tank)	*\$	6
25	1000577	Grommet (Motor and Capacitor Leads thru Motor Support Bracket)		2
26	M17921	Transformer, 5000-volt	@	1
	M11084-27	Screw (Transformer to Motor Support Bracket)	*\$	2
27	M11143-1	Bushing, Strain Relief		1
28	M15779-22	Service (Extension) Cord		1
29	M13942-5	Connector (Wire Nut)	&&	2
	M9900-77	Wire Assy. (to Capacitor)		1
30	M27547-01J	Fuel Tank	d	1
31	M23284	Cap, Fuel Tank		1
31A	M50323	Screen, Filler Neck		1
32	M10990-3	Bushing, Rubber (Fuel Filter into Fuel Tank)		1
33	M27417	Plug Drain		1
34	M12462-5	Relay		1
35	M25296-1	Mounting Bracket		1
36	M50416-03	Safety Control Assy.		1
37	M16615-1	Wire Harness, Blue, White		1
38	M9900-80	Wire Assy., Red		1
39	M13942-7	Connector		2
40	M11084-27	Screw Grounding		1
41	M50140	Fan Guard (Not Shown)		1

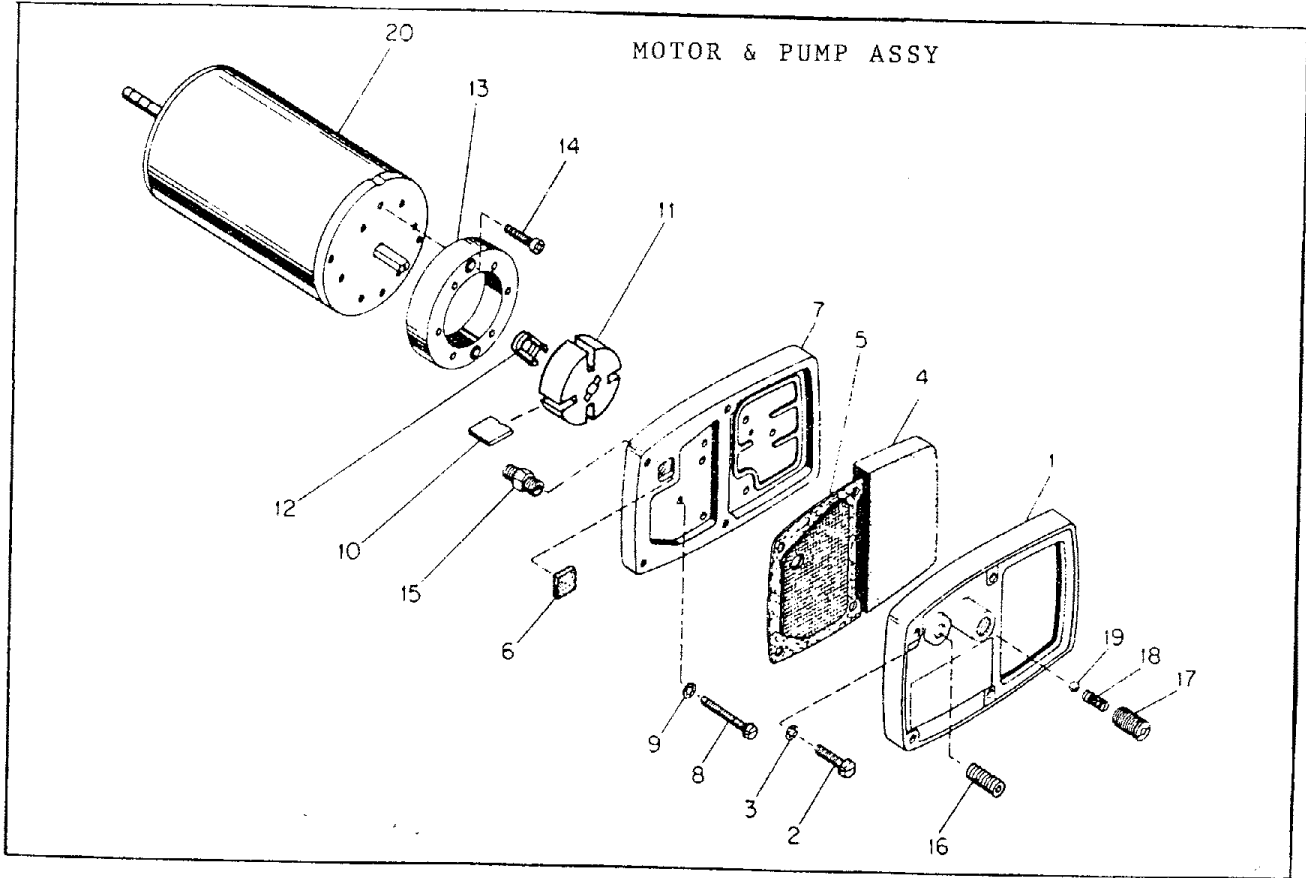
BURNER HEAD ASSY



BURNER HEAD ASSY

Index No.	Part Number	Part Name or Description	Ref. Notes	Quan.
15	M16803-5	Burner Head Assembly		1
1	M16789-7	Filter Assembly, Fuel		1
2	M13849	Nut, Flared		1
3	M16741-18	Ring, Retaining		1
	M16787-3	Nozzle Adapter Assy.		1
4	M16791	Connector, Male		1
5	M5976	Connector, Male		1
6	M8882	Sleeve, Nozzle seal		1
7	M10659-1	Washer, Nozzle		2
8	M10809-1	Spring, Nozzle seal		1
9	M18022	Nozzle, Aspirating 1.1 gph		1
10	M16535	Adapter, Nozzle		1
11	M10962-2	Spark Plug		1
12	M23090	Body, Burner Head		1

REDDY HEATER MA150 SPEC 3059G38 LOW PRESSURE



MOTOR & PUMP ASSY

Index No.	Part Number	Part Name or Description	Ref. Notes	Quan.
	M17875-2	Motor Package Assembly (See Figure 13, Index No. 9)	@	1
	M16675-2	Pump and Filter Parts Package		1
1	M16545	..End Cover, Filter		1
2	M12461-31	..Screw (Filter End Cover to Pump End Cover)	\$	4
3	WLI-3	..Lockwasher, Internal, No. 10	\$	4
4	M12179	..Intake Air Filter	@	1
5	M12244-1	..Output Filter Assy	@	1
6	M11637	..Filter, Lint	@	1
7	M50545	..End Cover, Pump (Port Plate)		1
8	M12461-34	..Screw (End Cover to Motor)	\$	6
9	WLI-3	..Lockwasher, Internal, No. 10	\$	6

MOTOR & PUMP ASSY

Index No.	Part Number	Part Name or Description	Ref. Notes	Quan.
10	M8643-3	..Blade		4
11	M22456-3	..Rotor, Pump		1
12	M22009	..Insert, Rotor		1
13	M8645-3	..Pump Body		1
14	FHPF3-7C	..Screw (Pump Body to Motor)	\$	2
15	M5976	..Connector, Male		1
16	M22997	..Plug, Socket Hd.		1
17	M27694	..Screw, Pressure Adjustment		1
18	M10993-1	..Spring, Compression (Pressure Relief)		1
19	M8940	..Ball, 1/4 in. dia.		1
20	M17814-2	..Motor		1
	M22993-1	Kit, Rotor		1